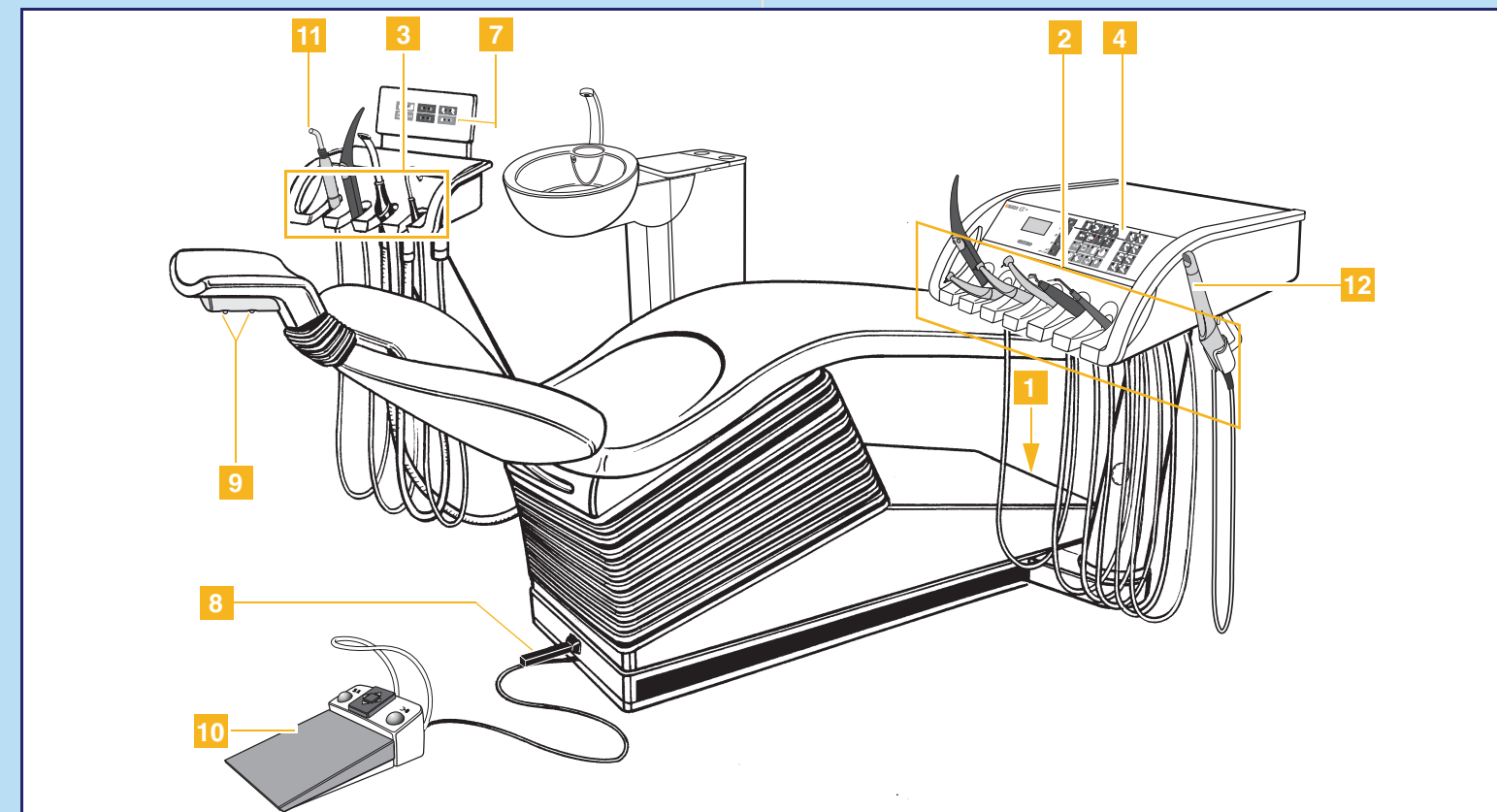


Overview image



Dear Customer,

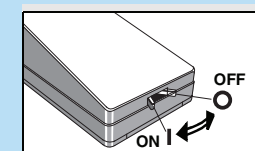
You can use these brief operating instructions to quickly find the most important control procedures and functions of your dental treatment center.

However, they do not describe all of its functions. Therefore, they cannot replace the full operating instructions of your dental treatment center with its many important descriptions and warnings.

Care and cleaning of the treatment center are described thoroughly in the document entitled "Care and Cleaning by the Practice Team". A quick overview of the required measures is provided in a document entitled "Care and Cleaning Plan for Treatment Centers".

Your C2⁺ Team

1 Unit main switch



During power-up, the treatment center automatically performs a self-test.

After 20 seconds, the "READY" reading appears on the display.

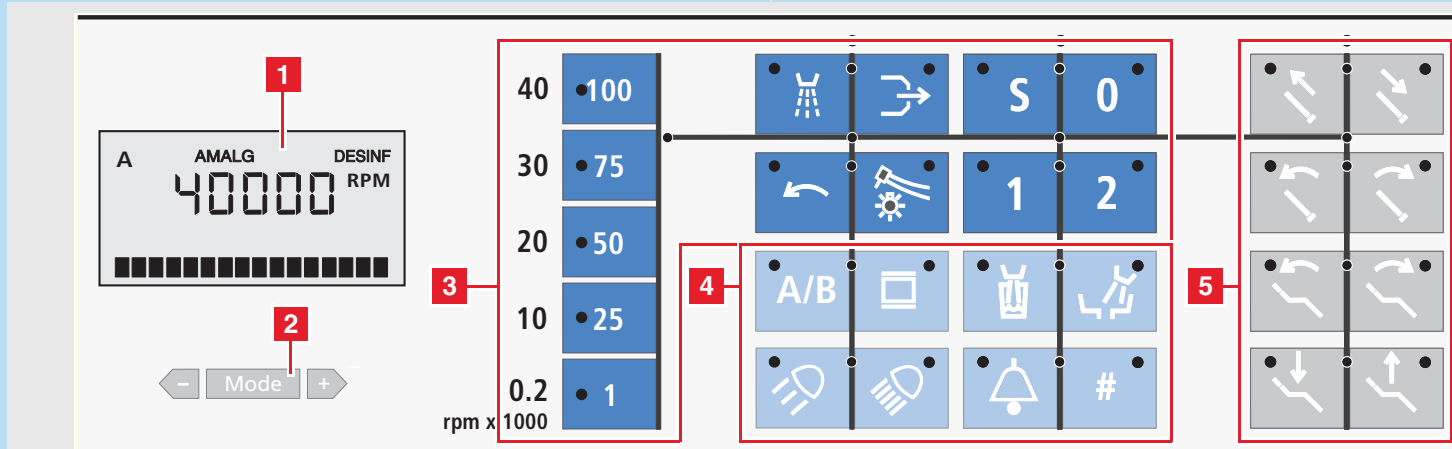
2 DE instrument positions

Position 1	Position 2	Position 3	Position 4	Position 5	Position 6
SPRAYVIT L	Motor	Motor	Motor	Highspeed handpiece	SIROSONIC L
	Highspeed handpiece	Highspeed handpiece	Highspeed handpiece	SIROSONIC L	SIROTOM
				Mini L.E.D.	Mini L.E.D.
					Camera
on the side of the dentist element					
Camera					

3 AE instrument positions

Position 1	Position 2	Position 3	Position 4
Mini L.E.D.	SPRAYVIT L	Suction handpiece	Saliva ejector
3. Suction hose			

Control panel, dentist element



1 Display for indicating unit status

AMALG appears when the amalgam rotor needs to be replaced.

DESINF starts flashing when **DENTOSEPT P** must be refilled.

A appears when user **A** is selected.
B appears when user **B** is selected.

2 Mode key

Mode key with **+/-** keys for programming basic settings.

You can go on to the next basic setting dialog by repeatedly pressing the **Mode** key.

You can also use the **+/-** keys to set the following functions directly once they have been selected:

- Intensity of the instrument lights
- Intensity of the operation light
- Tumbler filling time
- Cuspidor flushing time

3 Main functions – dark blue keys

Quick setting keys for instrument intensity and speed for:

- Electric motors
- Ultrasonic scalers
- HF electrosurgery

If you press a key for less than 0.5 s, the value indicated next to that key appears on the display).

To set intermediate values, keep the key pressed longer than 0.5 s.

40 ● 100
30 ● 75
20 ● 50
10 ● 25
0.2 ● 1
rpm x 1000

If the cursor is in the intensity setting block, the intensity can also be set by moving the cursor back and forth with the foot switch.

Spray ON/OFF
on burr drives

Chip blower
on burr drives

Counterclockwise rotation
for electric motor

Instrument light ON/OFF
Pressing this key for a while displays the light intensity settings dialog.

S **Mouth rinsing position chair program**
with last position memory function
Programmable cuspidor flushing and/or tumbler filling.

0 **Chair program 0**
Entry/exit position (freely programmable)

1 2 **Chair programs 1 and 2**
(freely programmable)
The four program keys are also used for reprogramming the chair programs.

4 Additional functions – light blue keys

A/B **Preselection of user A or B**
All instruments must be in place.

You cannot switch users after picking up an instrument.

X-ray image viewer ON/OFF
Also **WHITE SCREEN** activation for video option

Composite key ON/OFF
for **SIROLUX** operation light, reduced light intensity ≤ 8,000 lux for processing composite materials

SIROLUX operation light ON/OFF
for normal light intensity > 24,000 lux
Pressing this key for a while displays the light intensity settings dialog: **OPERATING LIGHT**

Tumbler filling
Pressing this key for a while displays the settings dialog: **CUP FILL TIMER**

Cuspidor flushing
Pressing this key for a while displays the settings dialog: **BOWL FLUSH TIMER**

Freely selectable function
e.g. call key, always functions as a button (connected by the service engineer)

Freely selectable function
The function can be preset as a button or switch in the **Mode dialog**.
(Connected by the service engineer)

5 Chair functions – gray keys

for manual chair settings:
Move headrest out/in

Tilt headrest backward or forward.

Tilt backrest backward or forward.

Height adjustment down/up

6 Additional functions of the control panel video keys

In addition to the previously described functions, the keys of the dentist element also have functions in connection with the video option. They are described in section 12.

5 Programming chair positions



The four factory-set programs can be changed individually by users **A** and **B** (observe the display).

- Programs **1** and **2**
- Entry/exit program **0**
- Mouth rinsing program **S**

You can move the chair to the desired treatment position by pressing the corresponding chair function key.

To have the **SIROLUX FANTASTIC** operation light switch on or remain off when the chair reaches the programmed treatment position, you must switch the lamp **ON** or **OFF** now. This setting is then also programmed.

Now move the dentist element to the desired treatment position by hand.

To save the program settings, press the desired program key for approx. 3 seconds.

An acoustic signal sounds and the LED in the corresponding key lights up.

6 Saving instrument functions



The factory-set instrument programs can be changed individually by user **A** and user **B**.

Select the corresponding user, i.e. **A** or **B**, pick up an instrument and set it according to your wishes.

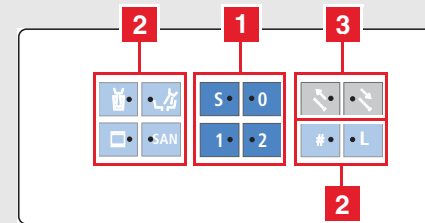
Example for electric motor:

- 40,000 rpm
- CW rotation
- with cooling spray
- with instrument light

To save the settings, press key **A/B** for a while (approx. 3 s).

An audible signal sounds. These settings are then activated whenever the instrument is picked up.

7 Control panel, assistant element



1 Main functions – dark blue keys

S **Mouth rinsing position chair program**
With memory function of last treatment position

0 **Chair program 0**
Entry/exit position (freely programmable)

1 2 **Chair programs 1 and 2**
(freely programmable)
The four program keys are also used for reprogramming the chair programs.

2 Additional functions – light blue keys

Tumbler filling
ON/OFF

Cuspidor flushing
ON/OFF

X-ray image viewer ON/OFF
Also **WHITE SCREEN** activation for **SIVISION**

SAN **Sanitation of the treatment center**
This key can be used to start the treatment center sanitation program.

**Freely selectable function**
The function can be preset as a button or switch in the **Mode dialog**.

L **Light ON/OFF**
With **SPRAYVIT** picked up:
Instrument light
With **SPRAYVIT** in holder:
Operation light

3 Chair functions – gray keys

Manual adjustment of headrest
Moving the headrest out/in

8 4-way foot control

Positioning the patient

Backrest
 Lever to the **left**:
 Backrest to the **rear**
 Lever to the **right**:
 Backrest to the **front**

Height adjustment
 Lever **up**:
 Chair moves **up**
 Lever **down**:
 Chair moves **down**

Suction via 4-way foot control

When the large spray aspirator is removed from its holder, the suction current can be switched on and off with the 4-way foot control.
 This function must be preselected in the mode dialog "SUCTION WITH CFS".

9 4-way control of headrest

Positioning the patient with the switches on the motorized head rest

Moving the headrest in/out
 Upper 4-way control **up**:
 Headrest moves **out**
 Upper 4-way control **down**:
 Headrest moves **in**

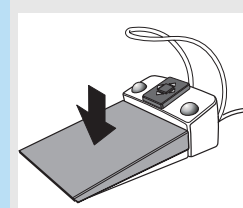
Tilting the headrest
 Upper 4-way control to the **left**:
 Headrest tilts **back**
 Upper 4-way control to the **right**:
 Headrest tilts **forward**

Backrest
 Lower 4-way control to the **left**:
 Backrest tilts to the **rear**
 Lower 4-way control to the **right**:
 Backrest tilts **forward**

Height adjustment
 Lower 4-way control **down**:
 Chair moves **down**
 Lower 4-way control **up**:
 Chair moves **up**

10 Foot switch for C+

Foot pedal



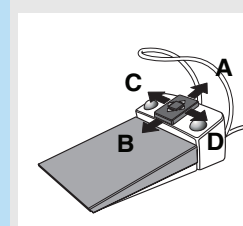
Activating the instrument

- ✓ An instrument is removed.
- ✓ Step on the foot pedal.
- ✗ The instrument starts running.
- ✗ If appropriate, intensity control relative to pedal movement (if "speed controller foot switch" has been preset under Mode).

Travel on the track (toward the user)

- ✓ All instruments are in place.
- ✓ Step on the foot pedal.
- ✗ The dentist element moves toward the operator as long as the foot switch is actuated.

4-way foot control plate



Cursor control

- ✓ The cursor control is activated (see Mode dialog).
- ✓ Shift 4-way foot control plate.

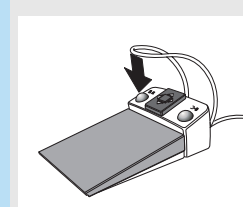
Cursor directions
A: forward – cursor up
B: back – cursor down
C: to the left – cursor to the left
D: to the right – cursor to the right

- ✗ Cursor navigation along the marked path and triggering of the corresponding key function.

Dentist element travel (away from the user)

- ✓ Cursor control switched off.
- ✓ Move 4-way foot control plate in direction **B**.
- ✗ The dentist element moves away from the operator as long as the 4-way foot control is actuated.

Left button



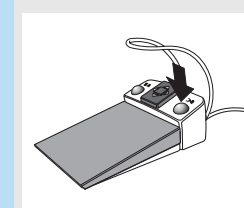
Programmed movement to mouth rising position S

- ✓ **All instruments are in place.**
- ✓ Press left key.
- ✗ Programmed movement of chair to mouth rinsing position **S** or the last treatment position (depending on starting situation).

Spray ON/OFF

- ✓ **An instrument is removed.**
- ✓ Press left key.
- ✗ Toggle between spray ON and spray OFF, or SIVISION function.

Right button



Programmed movement to position 0

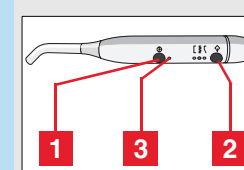
- ✓ **All instruments are in place.**
- ✓ Press right key.
- ✗ Programmed movement of the chair to entry/exit position 0.

Activating the chip blower

- ✓ **An instrument is removed.**
- ✓ Press right key.
- ✗ Chip blower active for duration of actuation, or SIVISION function.

11 Mini L.E.D.

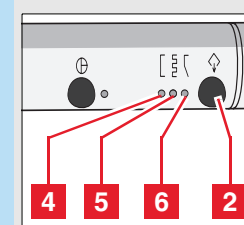
Keys and LEDs



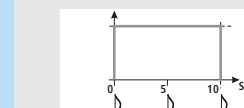
1 ON/OFF switch
 2 Function button
 3 Status control lamp

green	Normal operation
red, flashing	Overheat protection

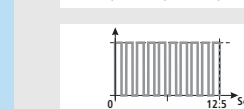
Operating mode displays



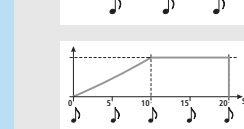
The **Mini L.E.D.** has three different modes. To select the desired menu, press function key 2.



4 Quick curing mode
 The Mini L.E.D. operates at full power for 10 seconds



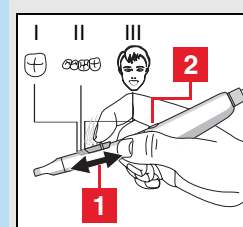
5 Pulse curing mode
 The Mini L.E.D. runs at full power in the "Pulse" mode



6 "Soft start" mode

12 Patient communication system

Cameras

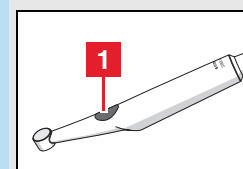


SIROCAM 3

- Slide switch for presetting the focusing range **before** inserting the camera in the oral cavity.

Pos. I	Detail exposure
Pos. II	Overview exposure
Pos. III	Whole-face exposure

- Camera key for controlling different video functions.



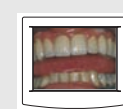
SIROCAM C

In the LIVE IMAGE mode, you can toggle between the close and far ranges by pressing button (1).

Button released – close range **5 – 15 mm**
 Key held down – far range **15 mm and more**

Operating modes

VIDEO mode

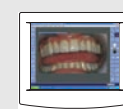


The camera image is directly displayed on the SIVISION monitor. The quad image memory of the camera is activated.

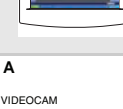


If the camera is the active instrument, "VIDEOCAM" and the operating mode "VIDEO MODE" appear on the display.

PC mode



The camera image is first processed on the PC and then the image generated on the PC is displayed on the SIVISION monitor.



The proper use of the PC mode is described in detail in the unit operating instructions. The configuration procedure is described in the instructions "PC Software Installation Manual", REF 59 11 719 (on CD).

PC mode->VIDEO mode selection

- ✓ with the camera **removed**
- press key A/D on the control panel.

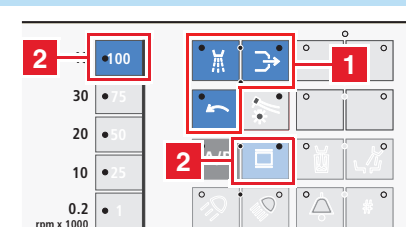


All of the video functions that are activated by pressing the control panel keys can also be triggered via the foot switch with the cursor functions.

Second monitor function without camera

The monitor integrated in the treatment center is used as a primary or secondary video display unit for the externally connected PC. Its factory settings and configuration procedure are described in the instructions "PC Software Installation Manual", REF 59 11 719 (on CD).

1 Patient communication system

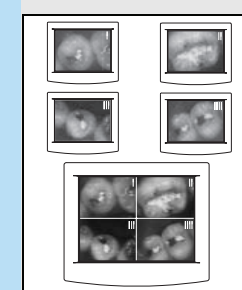


Grasping the camera ergonomically



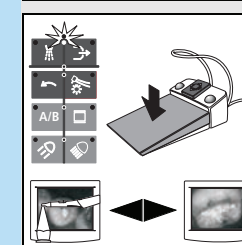
The risk of blurred exposures can be reduced considerably by using a finger resting on the patient's chin as a "makeshift camera stand".

1 Displaying images, saving and deleting in the Video mode



Display of still images

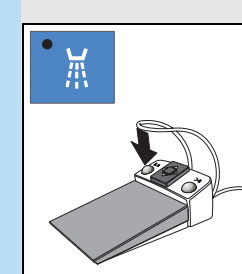
The camera can save 4 consecutive still images (identified with I, II, III and IIII). A 5th view shows a **QUAD IMAGE** in which these 4 still images are tiled on the screen.



Saving still images in the video camera

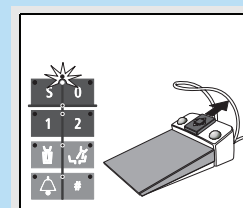
- ✓ The cursor is located in the **Instrument** key block.
- Remove the camera (→live image).
- Step on the foot pedal (→still image I).
- Step on the foot pedal again (→live image).
- Step on the foot pedal (→still image I is overwritten) etc.

To save still images **II** to **IIII**, switch to the next image memory location (see "Switching to the next image") and repeat the procedure.



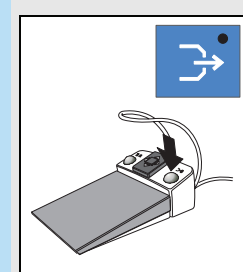
Switching to the next image

- ✓ with instruments in place or camera picked up
- Press the "Spray ON/OFF" key **or**
- Actuate the left foot switch key.
- In the **SINGLE IMAGE** mode, to switch to the next memory location.
- ✗ In the **QUAD IMAGE** mode, to switch to memory location **I, II, III** or **IIII** for image selection.



Switching to the next image with the cursor

- ✓ With the camera removed.
- ✓ The cursor is in the **chair programs** key block, level 1.
- 4-way foot control plate forward.
- ✗ Switches through images: STILL IMAGE I, STILL IMAGE II, STILL IMAGE III, STILL IMAGE IIII, QUAD IMAGE, STILL IMAGE I, STILL IMAGE II.....



Toggling between QUAD IMAGE and SINGLE IMAGE

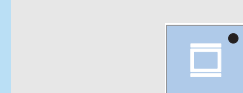
- ✓ With instruments in place or camera picked up.
- Actuate "Chip Blower" key **or**
- Actuate right left foot switch key.
- ✗ Toggle between **QUAD IMAGE** and **SINGLE IMAGE**.
- ✗ When you switch to a **SINGLE IMAGE**, the image previously selected in the **QUAD IMAGE** is displayed.



Clearing the memory

- ✓ Only with the camera removed and active!
- Actuate the "CCW rotation" key.
- ✗ Clears all camera image memory locations. The **LIVE IMAGE** mode for image I appears.

2 White screen/black screen



White screen

- Switches **WHITE SCREEN ON** or **OFF** on the SIVISION monitor.

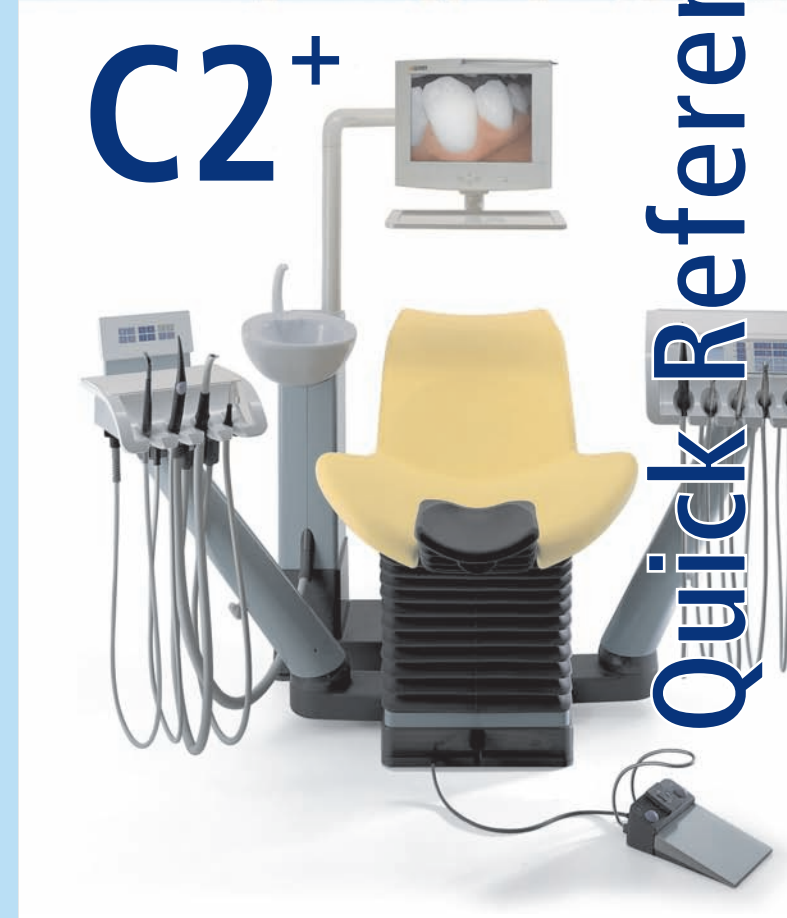
Black screen

- Toggles between any view and a **BLACK SCREEN**. The previous view reappears when you press this key again.

Sirona Dental Systems GmbH
 Fabrikstrasse 31, 64625 Bensheim, Germany
 www.sirona.com

REF 61 96 369

We reserve the right to make any alterations which may be required due to technical improvements.
 © Sirona Dental Systems GmbH 2007 Sprache: english Printed in Germany
 D 3370.202.01.02.02 11.2007 Ä.-Nr.:109 469 Imprimé en Allemagne



Quick Reference Guide