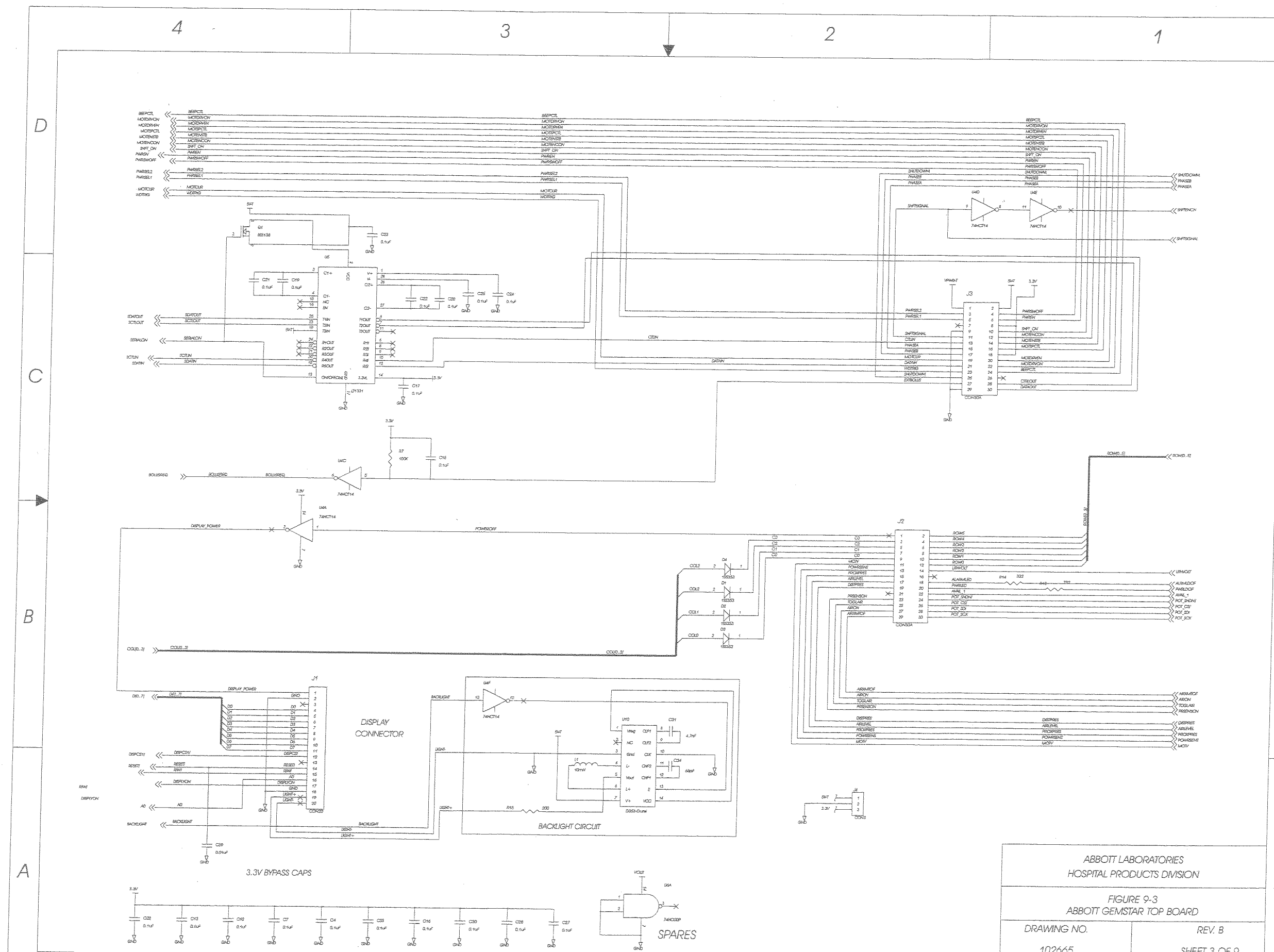
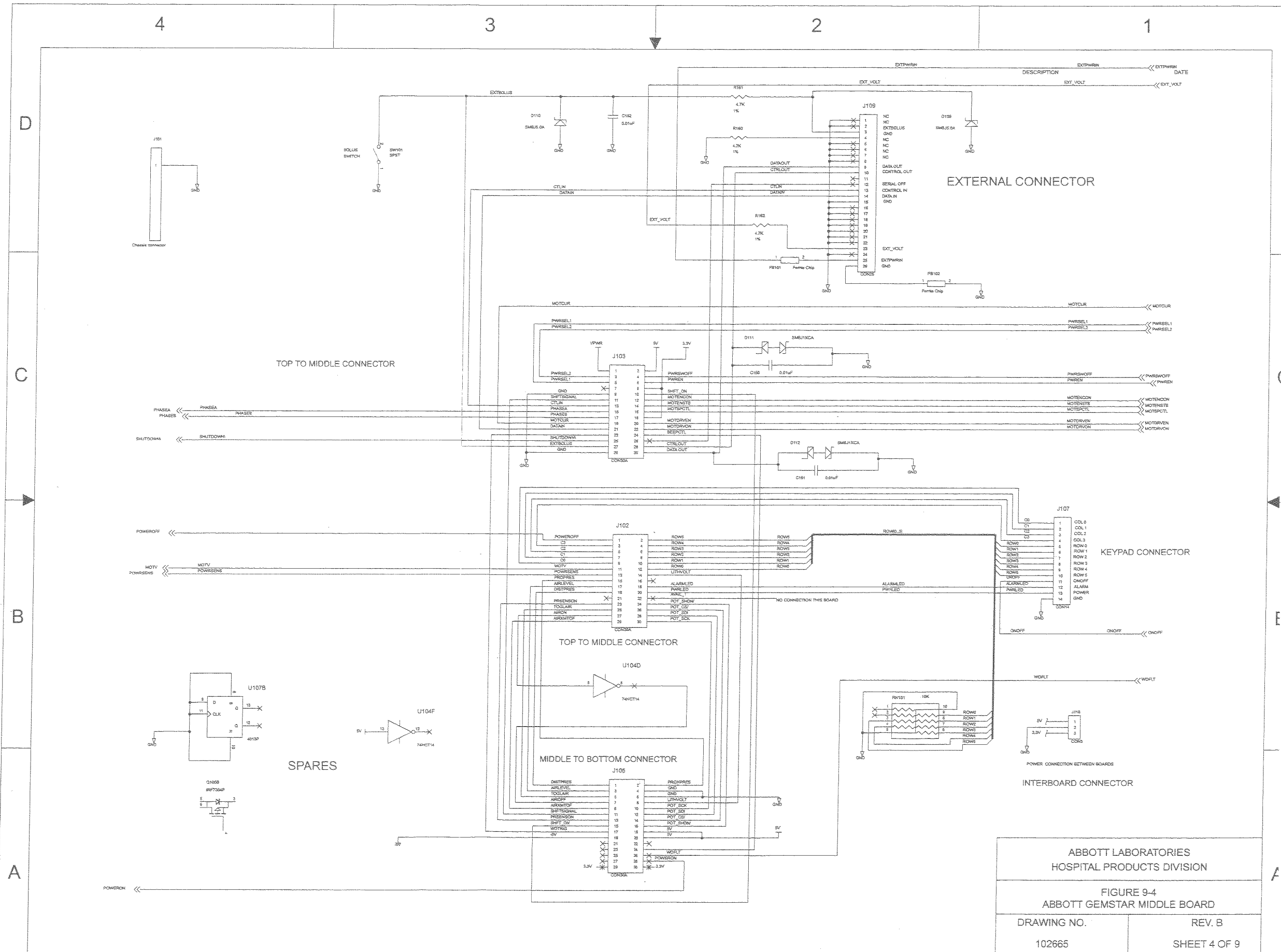


GEM CPU

ABBOTT LABORATORIES
 HOSPITAL PRODUCTS DIVISION
 FIGURE 9-2
 ABBOTT GEMSTAR TOP BOARD
 DRAWING NO. REV. B
 102665 SHEET 2 OF 9



ABBOTT LABORATORIES
 HOSPITAL PRODUCTS DIVISION
 FIGURE 9-3
 ABBOTT GEMSTAR TOP BOARD
 DRAWING NO. 102665
 REV. B
 SHEET 3 OF 9



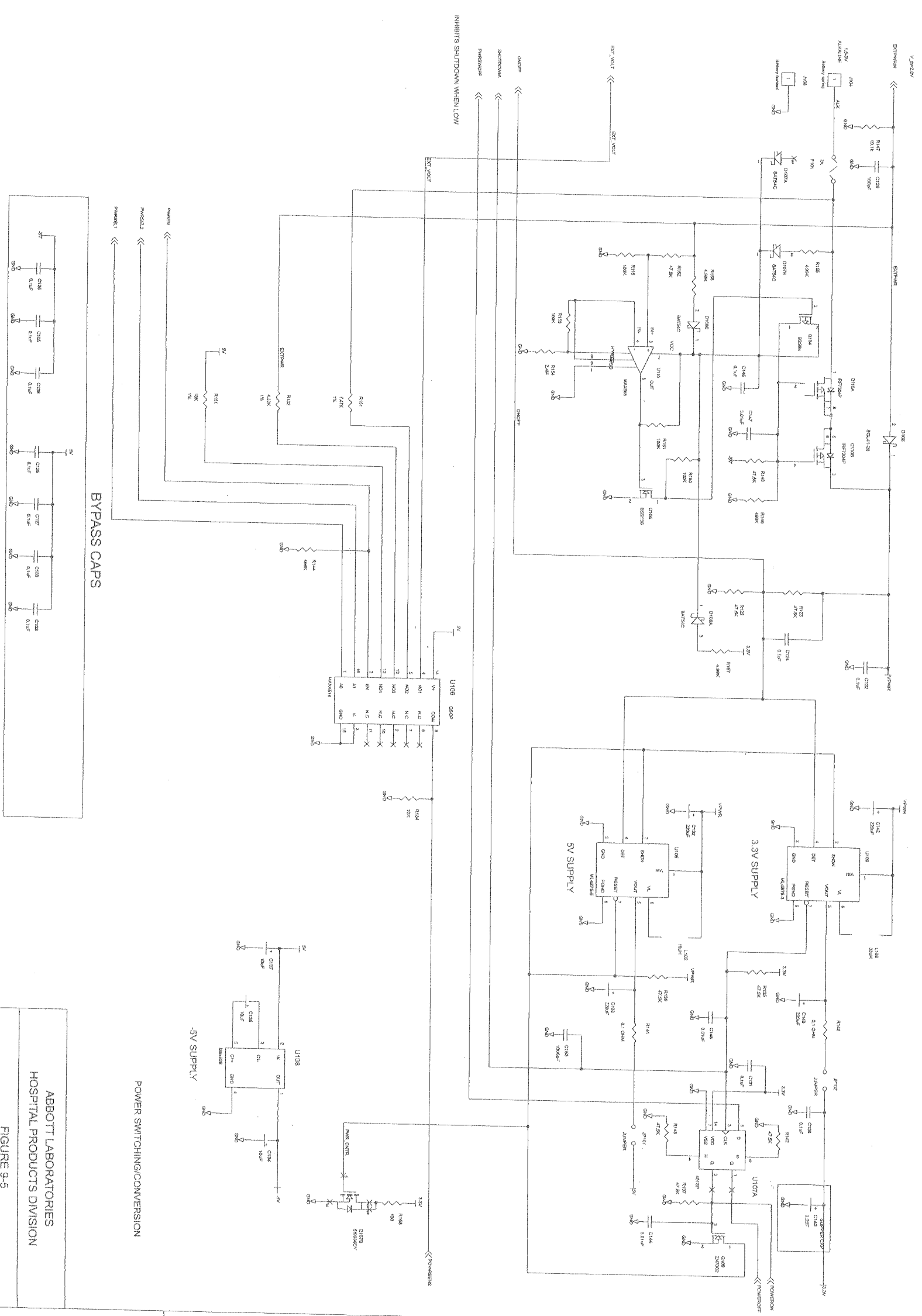
ABBOTT LABORATORIES
 HOSPITAL PRODUCTS DIVISION
 FIGURE 9-4
 ABBOTT GEMSTAR MIDDLE BOARD
 DRAWING NO. 102665 REV. B
 SHEET 4 OF 9

4

3

2

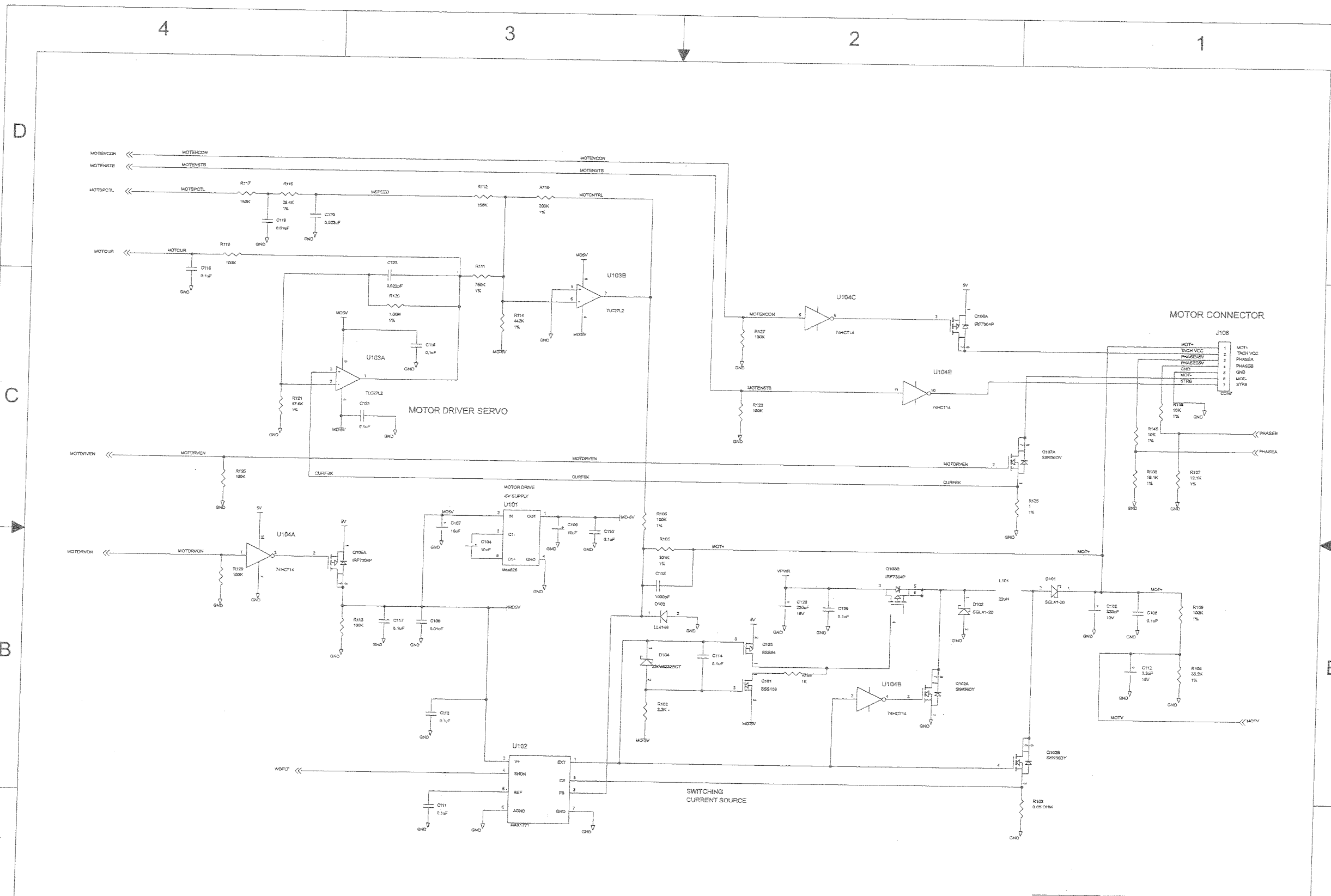
1



BYPASS CAPS

POWER SWITCHING/CONVERSION

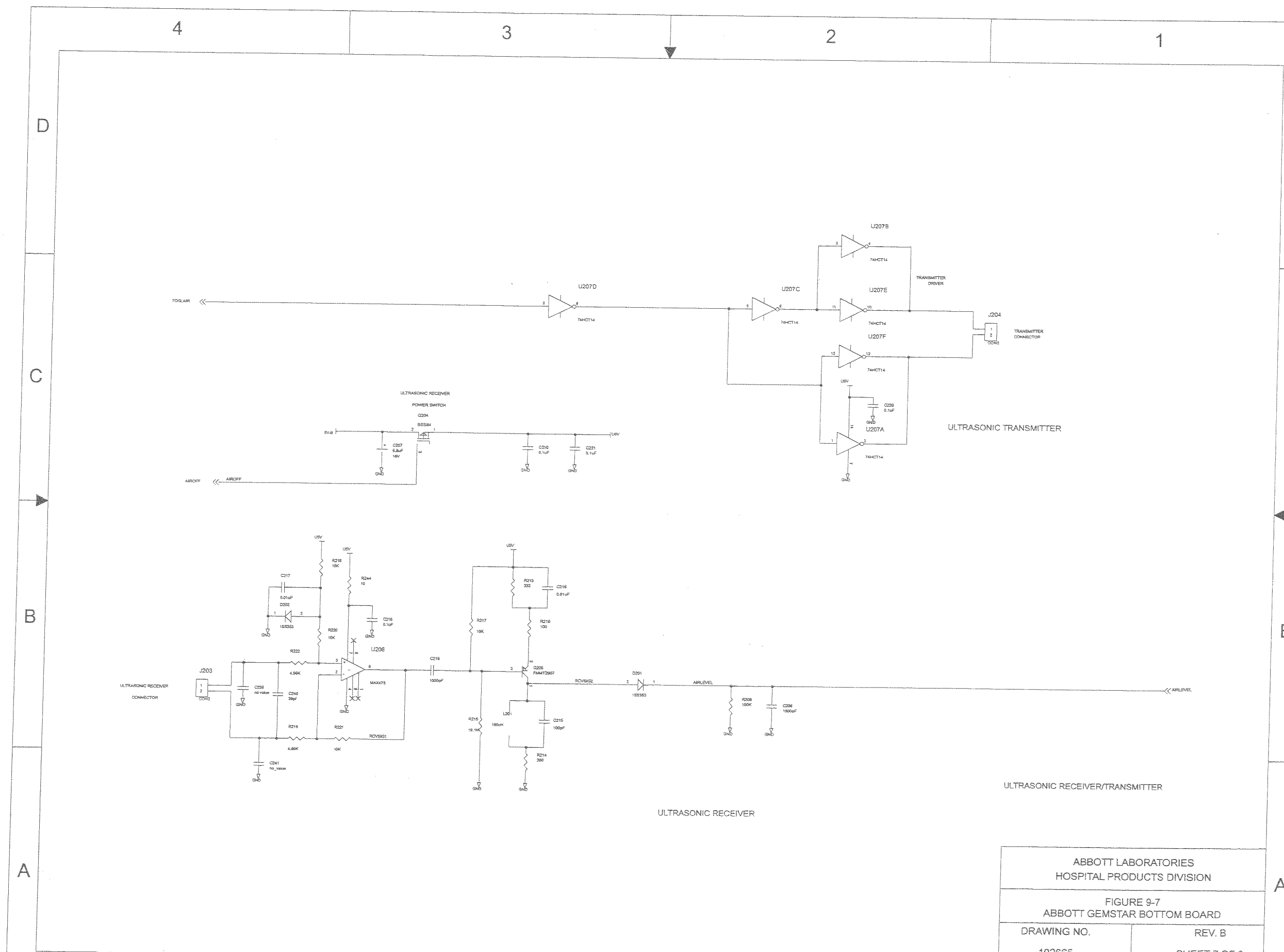
ABBOTT LABORATORIES
 HOSPITAL PRODUCTS DIVISION
 FIGURE 9-5
 ABBOTT GEMSTAR MIDDLE BOARD
 DRAWING NO. REV. B
 102665 SHEET 5 OF 9



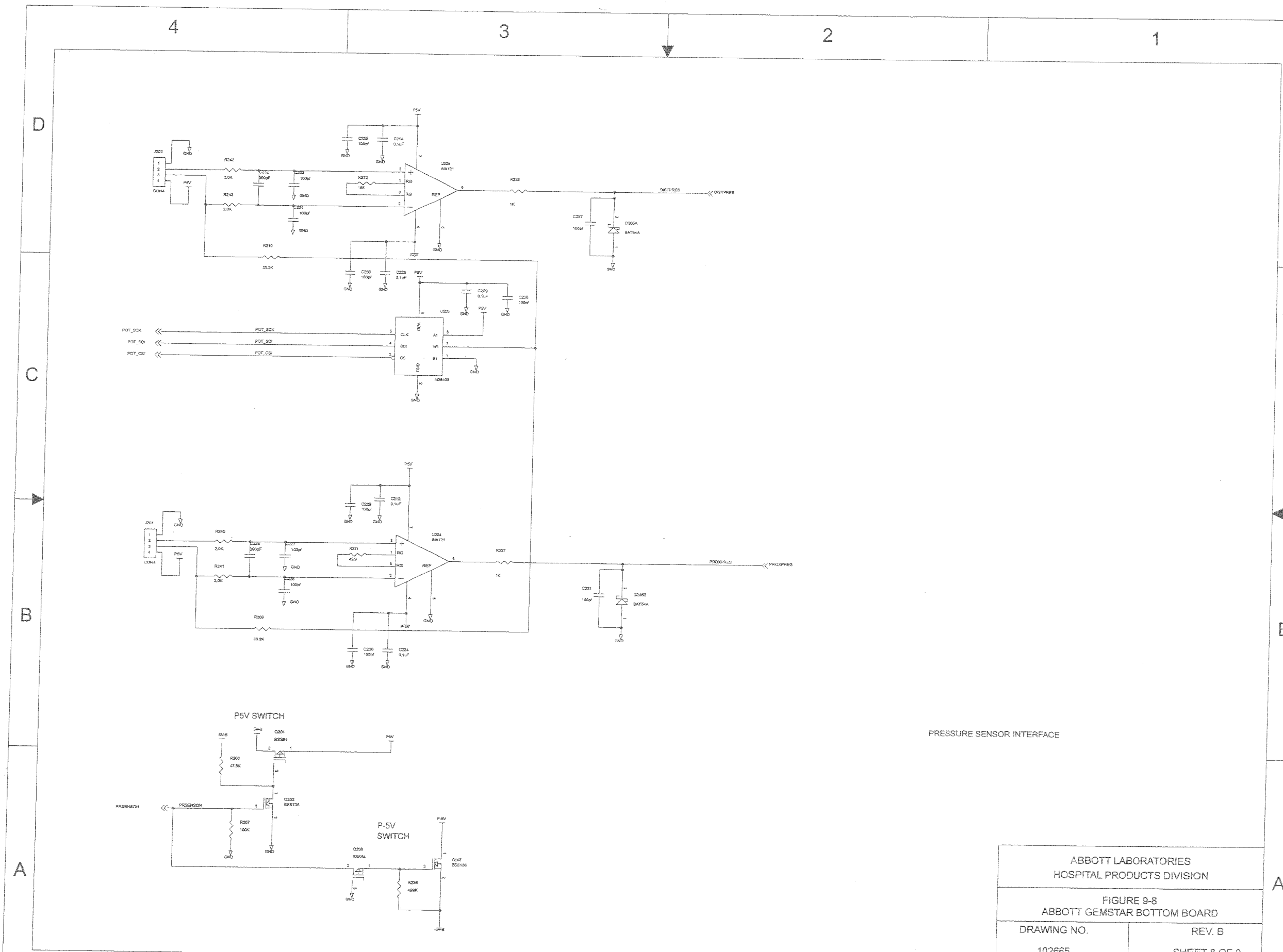
ABBOTT LABORATORIES
HOSPITAL PRODUCTS DIVISION

FIGURE 9-6
ABBOTT GEMSTAR MIDDLE BOARD

DRAWING NO. 102665	REV. B SHEET 6 OF 9
-----------------------	------------------------

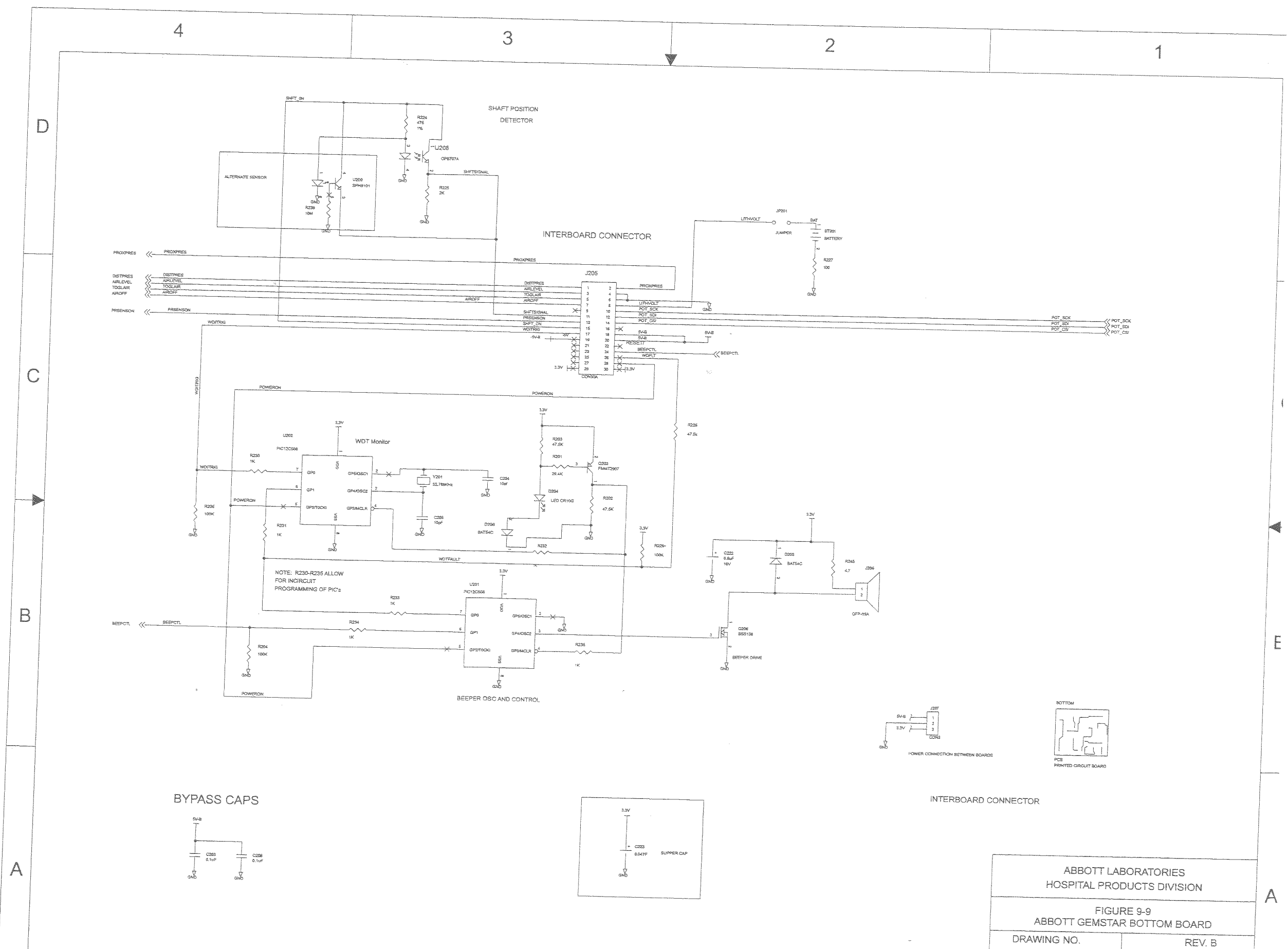


ABBOTT LABORATORIES HOSPITAL PRODUCTS DIVISION	
FIGURE 9-7 ABBOTT GEMSTAR BOTTOM BOARD	
DRAWING NO. 102665	REV. B SHEET 7 OF 9



PRESSURE SENSOR INTERFACE

ABBOTT LABORATORIES HOSPITAL PRODUCTS DIVISION	
FIGURE 9-8 ABBOTT GEMSTAR BOTTOM BOARD	
DRAWING NO. 102665	REV. B SHEET 8 OF 9



ABBOTT LABORATORIES
 HOSPITAL PRODUCTS DIVISION
 FIGURE 9-9
 ABBOTT GEMSTAR BOTTOM BOARD
 DRAWING NO. 102665
 REV. B
 SHEET 9 OF 9

WARNING: Federal (USA) law restricts this device to sale by or on the order of a physician or other licensed practitioner.

WARNING: Possible explosion hazard exists if used in the presence of flammable anesthetics.



Authorized Representative:
Edisco B.V. (Subsidiary of Abbott Laboratories)
8000AJ Zwolle
Netherlands



CSA is a registered trademark of the Canadian Standards Association. The use of NRTL/C adjacent to the CSA mark indicates that the product has been certified by CSA to U.S. and Canadian standards. CSA has been accredited by the U.S. Occupational Safety and Health Administration (OSHA) as a Nationally Recognized Test Laboratory (NRTL).

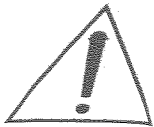


Type BF

Equipment providing a degree of protection higher than that for Type B equipment against electrical shock particularly regarding allowable leakage currents and having an F-Type applied part.

IPX1

Protected against dripping water.



Attention: Consult accompanying documents.

Microsoft and Windows are registered trademarks of Microsoft Corporation. Super Edisonite is a registered trademark of S.M. Edison Chemical Company. Seiko is a registered trademark of Seiko Instruments, Inc. Vesphene II and Manu-Klenz are registered trademarks of Calgon Vestal Laboratories. Formula C is a trademark of Diversey Corporation. Duracell is a registered trademark of Duracell, Inc. Durel is a registered trademark of Durel Corporation. Loctite is a trademark of Loctite Corporation.

This document and the subject matter disclosed herein are proprietary information. Abbott Laboratories retains all the exclusive rights of dissemination, reproduction, manufacture and sale. Any party using this documentation accepts it in confidence, and agrees not to duplicate it, in whole or in part, nor disclose it to others without the written consent of Abbott Laboratories.

Copyright © 2000 Abbott Laboratories, Inc.
All Rights Reserved

Printed in USA
Abbott Laboratories, North Chicago, Illinois 60064, USA