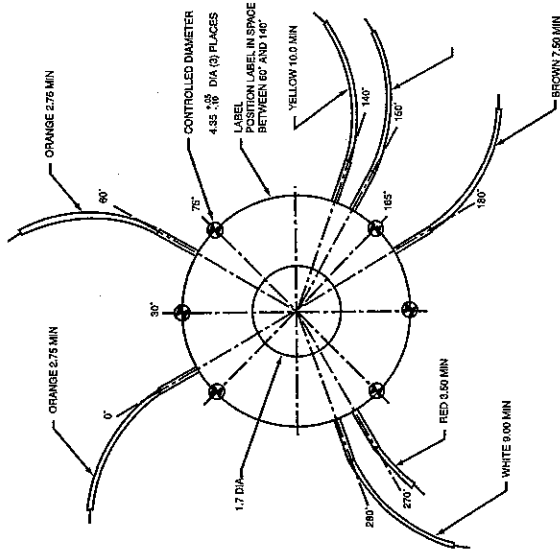


Notes:

NOTES, UNLESS OTHERWISE SPECIFIED:

1. FINISHED
2. ALL LEAD WIRES ARE SLEEVED & OUTSIDE OF TRANSFORMER



WORKING COPY
THIS DOCUMENT WILL
NOT BE UPDATED



TOROID TRANSFORMER MANUFACTURING SPECIFICATIONS

1.0 MARKINGS:

- 1.1 MANUFACTURER'S NAME: WESTERN MAGNETICS
- 1.2 DATE CODE: WWYY (WEEKS, MONTHS, AND YEARS)
- 1.3 MARKED AS BEING "HIGH POTTED"

2.0 ELECTRICAL SPECIFICATIONS:

- 2.1 PRIMARY: 100V/200/220/240 VAC 50/60 HZ, 28 AWG WIRE
- 2.2 SECONDARY: 17.5 VAC OPEN CIRCUIT; 5 X 2.4 AWG WIRE

3.0 COILS:

- 3.1 TAPE WOUND TOROID: .012 ARMOCO STEEL - TRANSFORMER (OR EQUIV).

4.0 INSULATION:

- 4.1 LEADS TO CORE: EPOXY COATING PAINTED AT 125 C, 1000 VAC ONE MINUTE MINIMUM BREAKDOWN, LEADS 100 MILS
- 4.2 PRIMARY TO SECONDARY: 3 LAYERS 644 SCOTCH (130 C RATED, GUIDE GANEX FILE 17504) TAPE TO BE 1" WIDE APPLIED WITH ONE-HALF THE AREA OF THE CORE BEING COVERED FOR THE SECONDARY (PRIMARY IS INSULATION) TAPE TO BE 1" WIDE APPLIED WITH ONE-HALF THE AREA OF THE CORE BEING COVERED FOR THE SECONDARY (PRIMARY IS INSULATION)
- 4.3 SECONDARY COILS: 1 LAYER #44 SCOTCH, 1 LAYER #11 SCOTCH (105 C RATED, USED FOR COSMETIC PURPOSES ONLY)

5.0 DIELECTRIC TEST:

- 5.1 100% TEST BEFORE TRANSFORMER IS MARKED "HIGHT POTTED". PRIMARY TO SECONDARY 4000 VAC FOR 1 MINUTE OR 4800 VAC FOR 1 SECOND.

6.0 WINDINGS:

- 6.1 DOUBLE INSULATED COPPER MAGNET WIRE (NYLON WITH POLYURETHANE INSULATION) TO BE USED. LEADS ARE NON-COAXIAL AND HAVE NO CROSS-OVER LEADING BETWEEN PRIMARIES AND SECONDARY WINDINGS.
- 6.2 PRIMARY: 28AWG, .014 MIN. DIAMETER.
- 6.3 SECONDARY: 5 STRANDS 28AWG, .027 MIN. DIAMETER.

7.0 LEADS:

- 7.1 PRIMARY AND SECONDARY (UL STYLE 1015 110) THERMOPLASTIC LEADS ARE TWISTED AND SOLDERED TO PRIMARY OR SECONDARY MAGNET WIRE, INSULATION OVER AND UNDER THE LEADING AREA AND MECHANICAL CONNECTION OF LEAD WIRES TO COIL IS #44 SCOTCH TAPE. SEE DRAWING FOR COLOR CODES AND LEAD LENGTHS AND SLEEVING NOTE.

8.0 IMPREGNATION:

- 8.1 THE TRANSFORMER IS IMMERSED IN ISONE, 31 X9398, DRIP DRIED, AND BAKED ACCORDING TO VARNISH MANUFACTURER'S INSTRUCTIONS.

8.0 OVERALL DIMENSIONS:

- 8.1 1.7" ID, 4.25" - 4.40" OD, 1.20" - 1.30" HT.

10.0 OVERLOAD PROTECTION:

- 10.1 EXTERNAL BY MEANS OF A CIRCUIT BREAKER ON THE PRIMARY (AIRWAY) OR SECONDARY (LOAD) SIDE. SEE DRAWING FOR 1.25N FOR 220/240V, 250V, 50/60 HZ AUL (RECOGNIZED COMPONENT).

REV	DESCRIPTION	DATE	APPROVED
0	ASSEMBLY	9/2/88	PLD/BJ
1	ADD TOROID COIL TO 17.5 VAC	9/14/92	EM
2	ADD TOROID COIL TO 17.5 VAC	9/14/92	EM
3	ADD TOROID COIL TO 17.5 VAC	9/14/92	EM
4	ADD TOROID COIL TO 17.5 VAC	9/14/92	EM
5	ADD TOROID COIL TO 17.5 VAC	9/14/92	EM
6	ADD TOROID COIL TO 17.5 VAC	9/14/92	EM
7	ADD TOROID COIL TO 17.5 VAC	9/14/92	EM
8	ADD TOROID COIL TO 17.5 VAC	9/14/92	EM
9	ADD TOROID COIL TO 17.5 VAC	9/14/92	EM
10	ADD TOROID COIL TO 17.5 VAC	9/14/92	EM

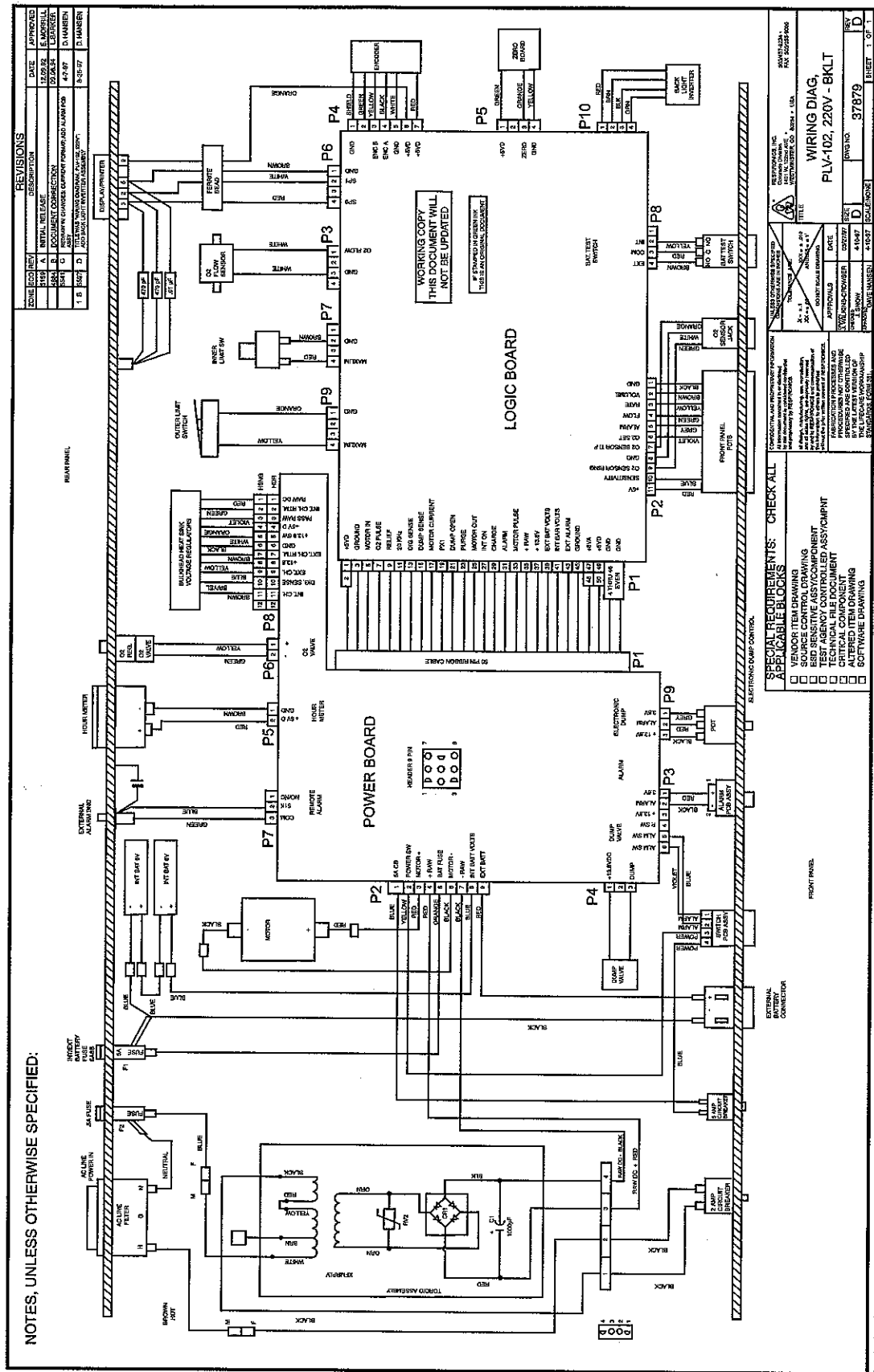
REV	DESCRIPTION	DATE	APPROVED
0	ASSEMBLY	9/2/88	PLD/BJ
1	ADD TOROID COIL TO 17.5 VAC	9/14/92	EM
2	ADD TOROID COIL TO 17.5 VAC	9/14/92	EM
3	ADD TOROID COIL TO 17.5 VAC	9/14/92	EM
4	ADD TOROID COIL TO 17.5 VAC	9/14/92	EM
5	ADD TOROID COIL TO 17.5 VAC	9/14/92	EM
6	ADD TOROID COIL TO 17.5 VAC	9/14/92	EM
7	ADD TOROID COIL TO 17.5 VAC	9/14/92	EM
8	ADD TOROID COIL TO 17.5 VAC	9/14/92	EM
9	ADD TOROID COIL TO 17.5 VAC	9/14/92	EM
10	ADD TOROID COIL TO 17.5 VAC	9/14/92	EM

INTERCONNECTION SCHEME	WIRE COLOR	CONNECT TO
100	BLACK TO VEL	BLACK
200	RED TO YEL	BROWN
300	RED TO YEL	WHITE
400	BLACK TO VEL	BROWN
500	RED TO YEL	BROWN

WIRE COLOR	CONNECT TO
BLACK	BLACK
BROWN	BROWN
WHITE	WHITE
BROWN	BROWN
BROWN	BROWN

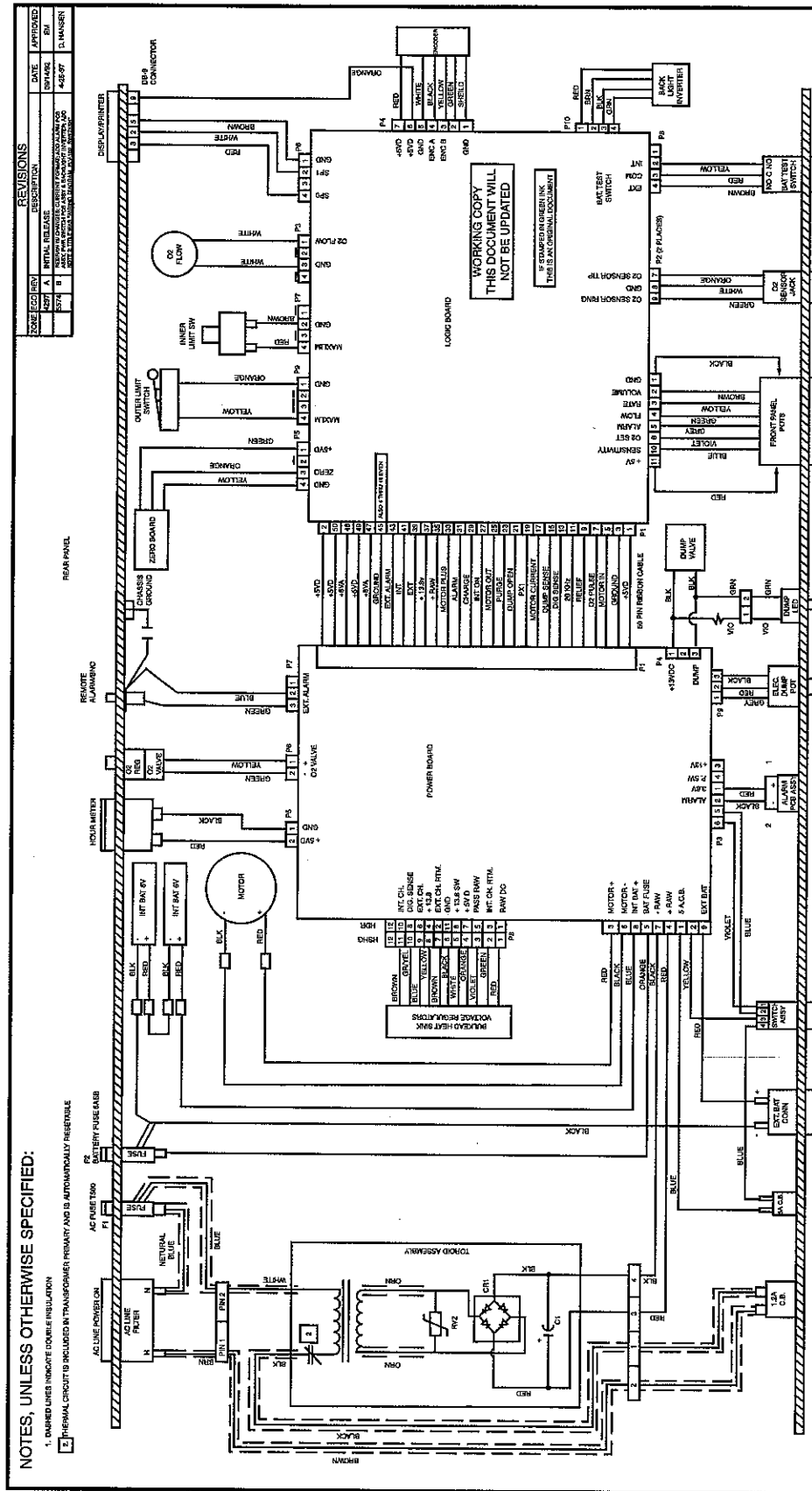
IF STAMPED IN GREEN INK THIS IS AN ORIGINAL DOCUMENT.

Notes:



Notes:

- 1. UNBARRED LINES INDICATE DOUBLE INSULATION
- 2. THERMAL CIRCUIT IS INCLUDED IN TRANSFORMER PRIMARY AND IS AUTOMATICALLY RESETTABLE



DATE	APPROVED	REVISIONS
04/29/97	CLM/SST	1 INITIAL REV. DATE
04/29/97	CLM/SST	2 REVISIONS
04/29/97	CLM/SST	3 REVISIONS

WORKING COPY
THIS DOCUMENT WILL
NOT BE UPDATED

SPECIAL REQUIREMENTS: CHECK ALL APPLICABLE BLOCKS

- VENDOR ITEM DRAWING
- CUSTOMER CONTROLLED DRAWING
- SOFTWARE CONTROLLED ASSY/COMP
- TEST AGENCY CONTROLLED ASSY/COMP
- TECHNICAL FILE DOCUMENT
- ORIGINAL COMPONENT
- PHYSICAL COMPONENT
- SOFTWARE DRAWING

RESPIRONICS, INC.
Company Division
WESTMINSTER, CO. 80531 - USA
3036791800
FAX 3032526000

TITLE WIRING DIA, PLY102,
2 WIRE - CE

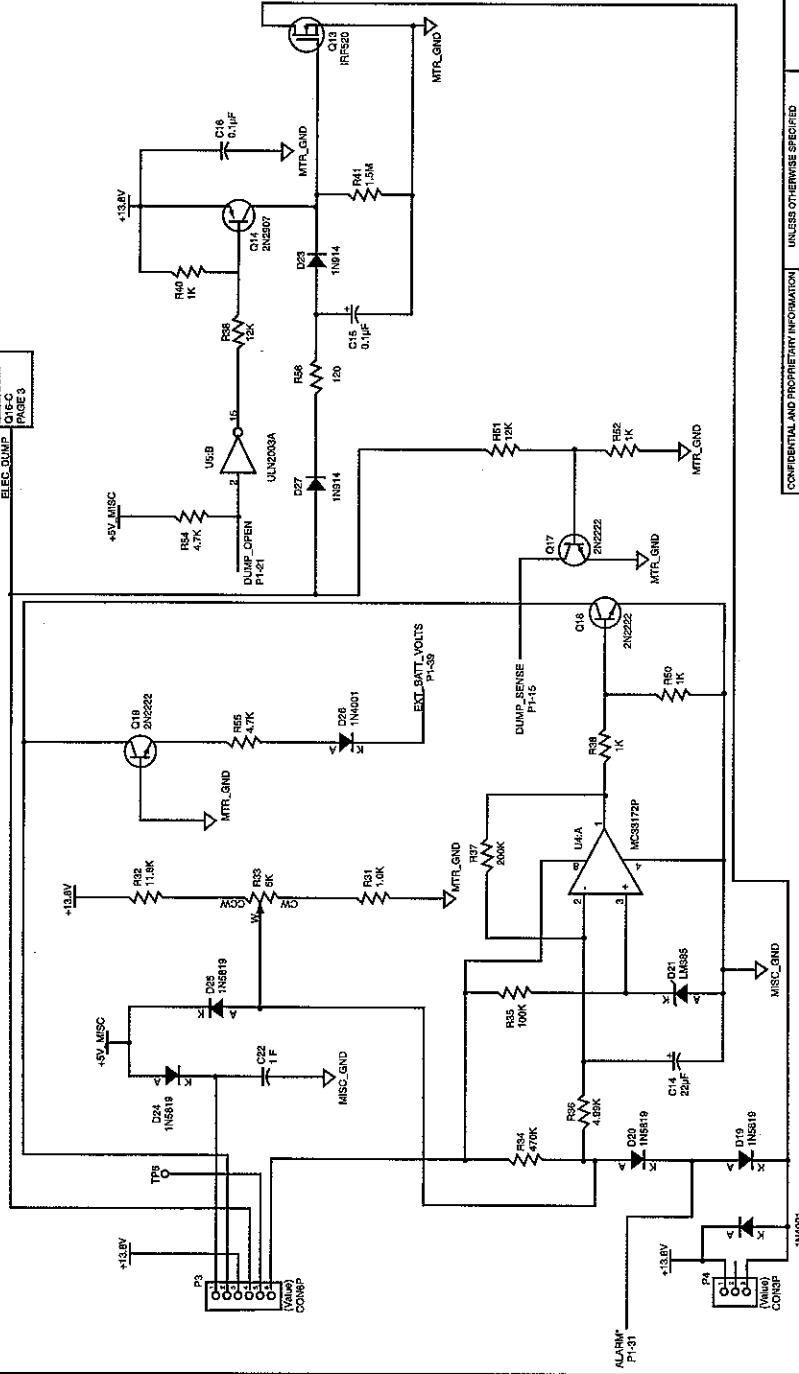
DATE 02/17/97
APPROVALS
DESIGNER: [Signature]
CHECKED BY: [Signature]
DRAWN BY: [Signature]
SCALE: 1:1

DWG NO. 37862
REV. B
SHEET 1 OF 1

Notes:

NOTES, UNLESS OTHERWISE SPECIFIED:

ELEC_DUMP PAGE 3



REVISIONS			
ECC REV	DESCRIPTION	DATE	APPROVED
4839	A	8-5-94	LEB
Document Release			

CONFIDENTIAL AND PROPRIETARY INFORMATION
 All information contained in or derived from this document is considered confidential and proprietary by LIFE CARE.

USE AND PERMISSIONS ARE LIMITED TO THE DIMENSIONS ARE IN INCHES
 TOLERANCE ARE:
 .X = ±.1
 .X = ±.03
 .X = ±.1
 DO NOT SCALE DRAWING

FABRICATION PROCESSES AND MATERIALS SPECIFIED ARE CONTROLLED BY THE LATEST VERSION OF THE LIFE CARE WORKMANSHIP STANDARDS, FORM 381.

APPROVALS
 DRAWN: J. GOSS
 CHECKED: CLAY POOLE
 APPROVED: ED MORILL

DATE: 8/26/96
 DATE: 8/26/96
 APPROVED: 8/26/96

SCALE: 1/1

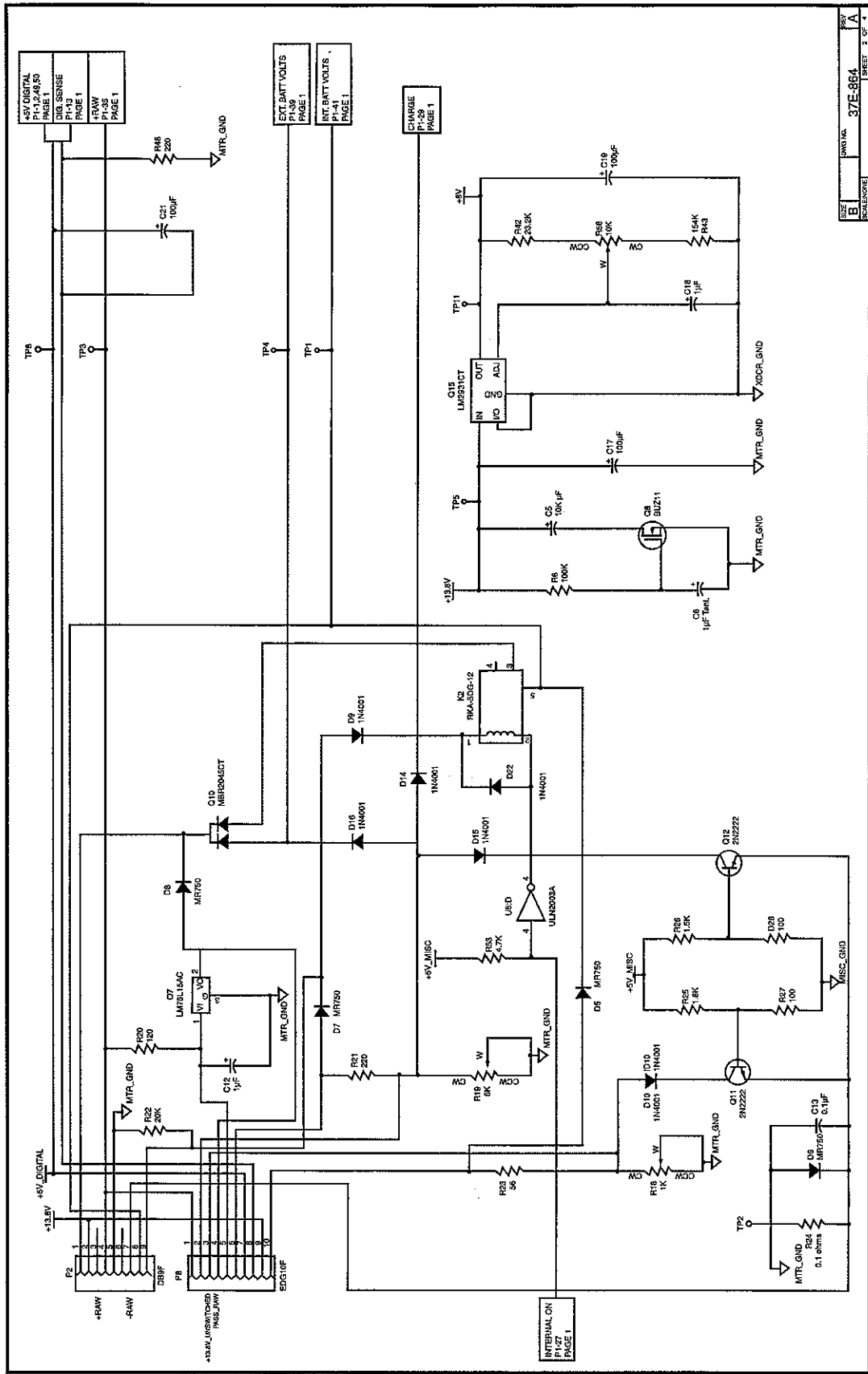
LIFE CARE INTERNATIONAL, INC.
 8034167 0034 -
 WESTMINSTER, CO 80234 • USA
 FAX 303255-9000

TITLE: SCHEM, POWER BD ASSY - PLV-102

SIZE: B
 DWG NO.: 37E-864
 REV: A

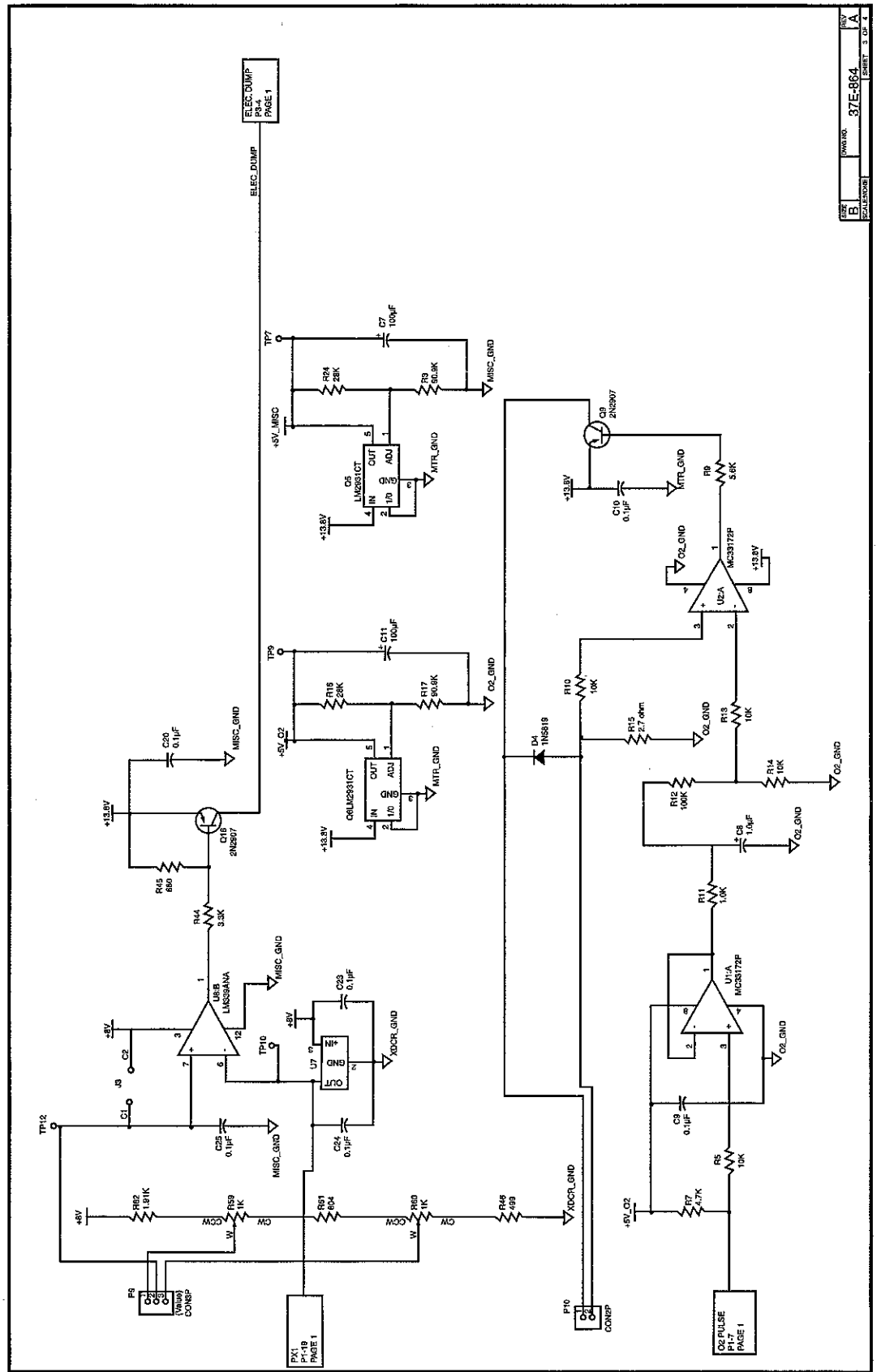
SHEET 1 OF 4

Notes:

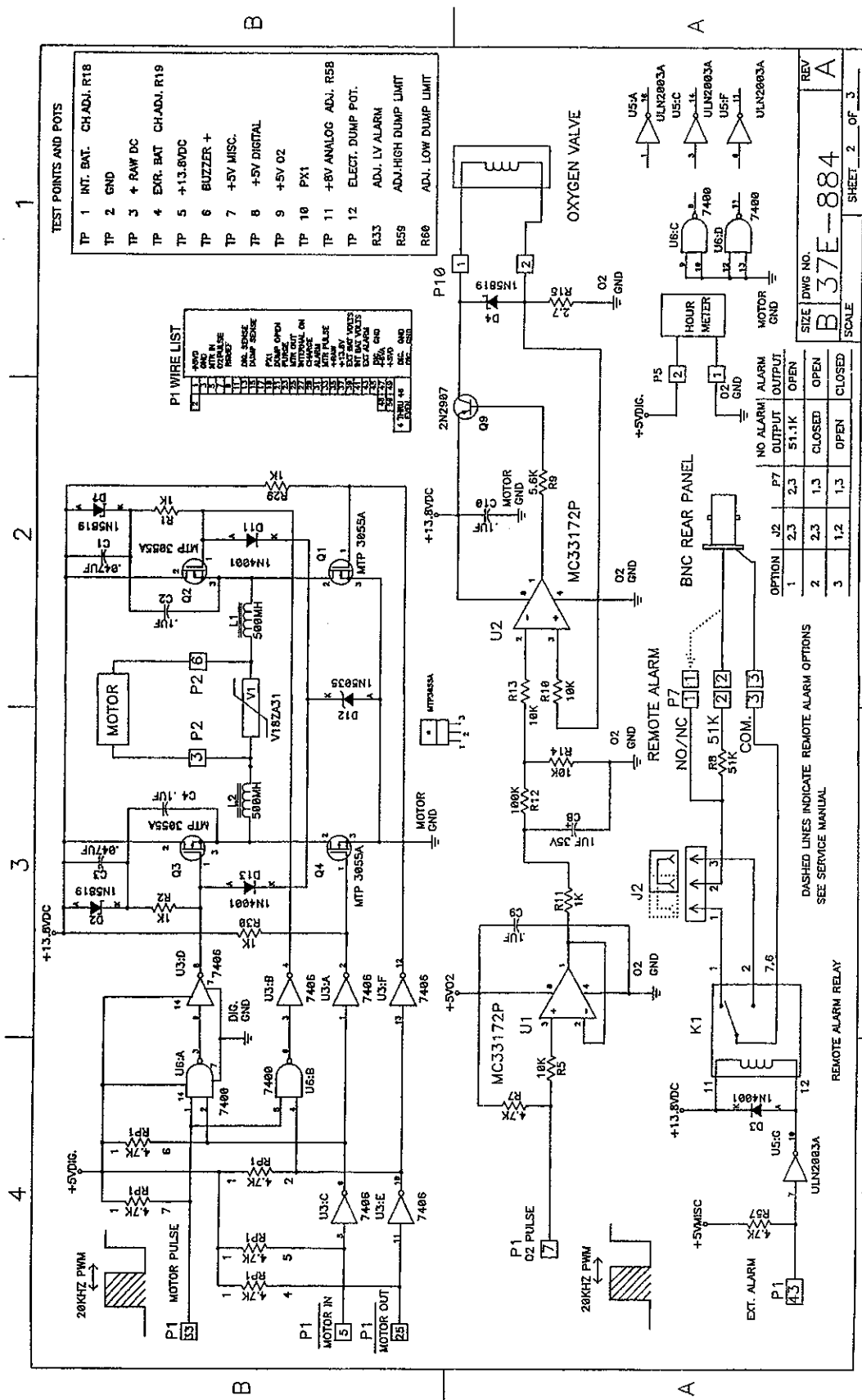


INTERNAL ON
P1-27
PAGE 1

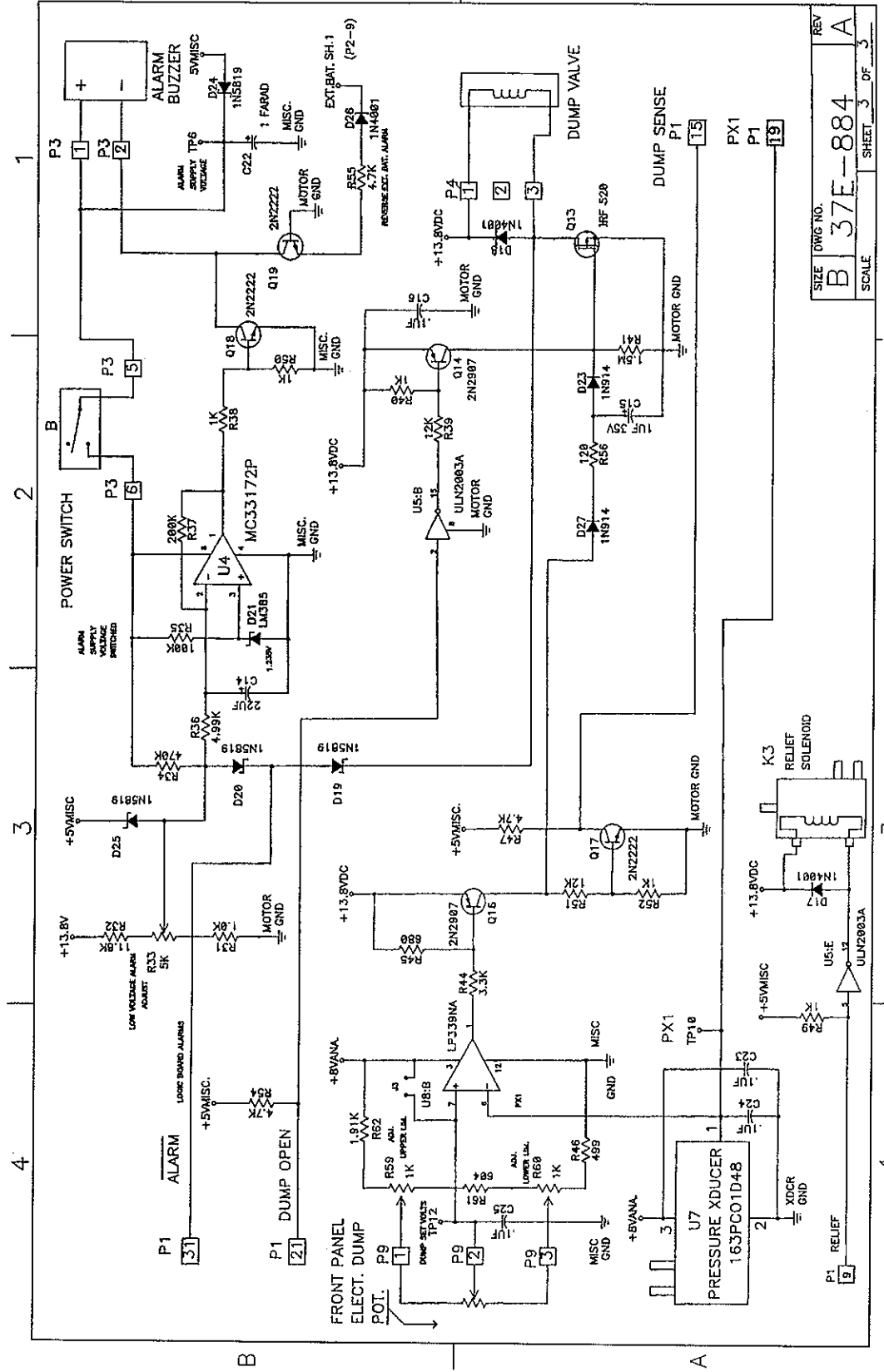
Notes:



Notes:



Notes:

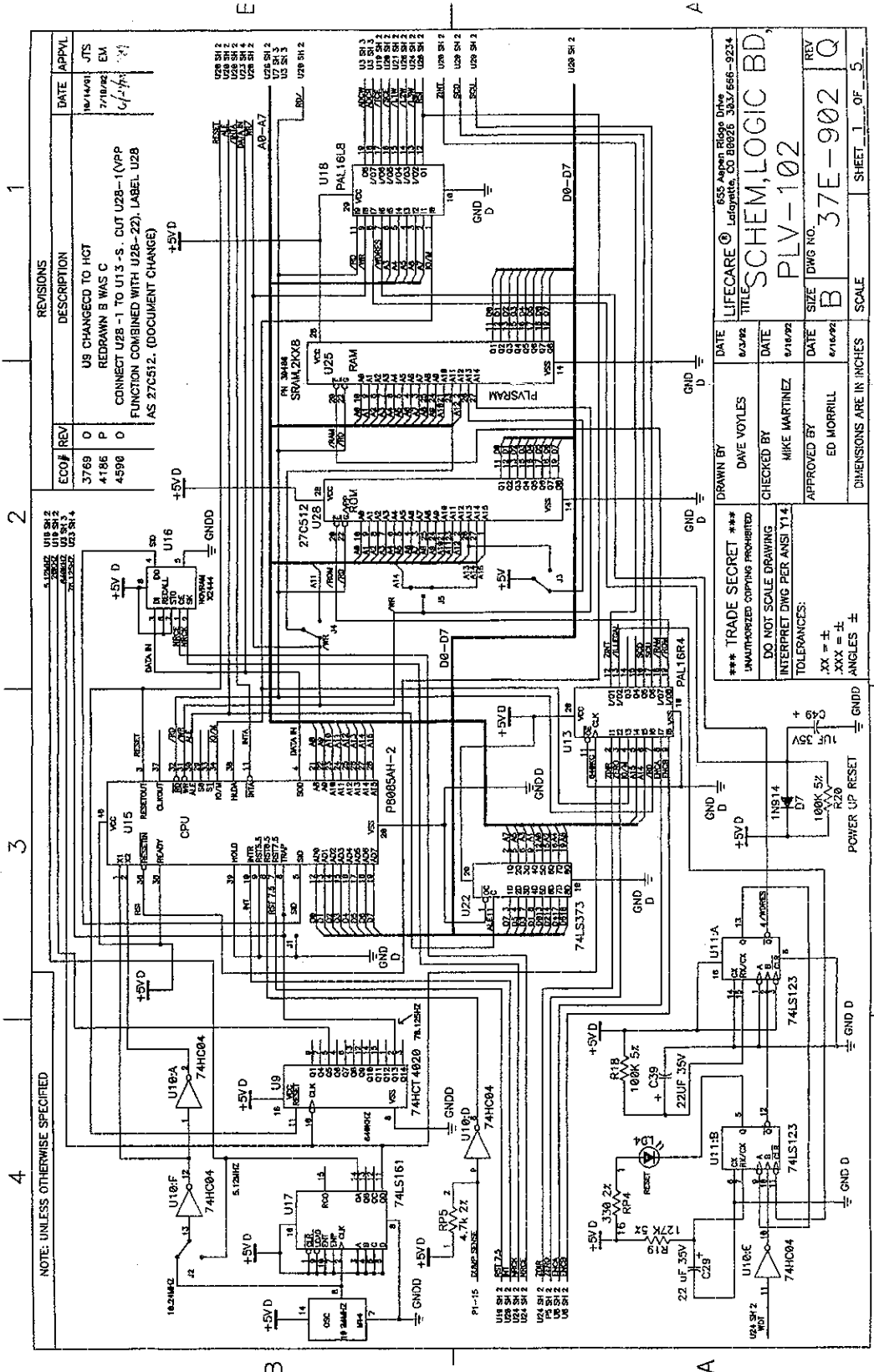




SECTION 14.0

Schematics

Notes:



NOTE: UNLESS OTHERWISE SPECIFIED

REVISIONS

DESCRIPTION

DATE

APPROVAL

ECO#

REV

DESCRIPTION

DATE

APPROVAL

ECO#

REV

DESCRIPTION

DATE

APPROVAL

ECO#

REV

DESCRIPTION

DATE

APPROVAL

ECO#

REV

DESCRIPTION

DATE

APPROVAL

ECO#

REV

DESCRIPTION

DATE

APPROVAL

ECO#

REV

DESCRIPTION

DATE

APPROVAL

ECO#

REV

DESCRIPTION

DATE

APPROVAL

ECO#

REV

DESCRIPTION

DATE

APPROVAL

ECO#

REV

DESCRIPTION

DATE

APPROVAL

ECO#

REV

DESCRIPTION

DATE

APPROVAL

ECO#

REV

DESCRIPTION

DATE

APPROVAL

ECO#

REV

DESCRIPTION

DATE

APPROVAL

ECO#

REV

DESCRIPTION

DATE

APPROVAL

ECO#

REV

DESCRIPTION

DATE

APPROVAL

ECO#

REV

DESCRIPTION

DATE

APPROVAL

ECO#

REV

DESCRIPTION

DATE

APPROVAL

ECO#

REV

DESCRIPTION

DATE

APPROVAL

ECO#

REV

DESCRIPTION

DATE

APPROVAL

ECO#

REV

DESCRIPTION

DATE

APPROVAL

ECO#

REV

DESCRIPTION

DATE

APPROVAL

ECO#

REV

DESCRIPTION

DATE

APPROVAL

ECO#

REV

DESCRIPTION

DATE

APPROVAL

ECO#

REV

DESCRIPTION

DATE

APPROVAL

ECO#

REV

DESCRIPTION

DATE

APPROVAL

ECO#

REV

DESCRIPTION

DATE

APPROVAL

ECO#

REV

DESCRIPTION

DATE

APPROVAL

ECO#

REV

DESCRIPTION

DATE

APPROVAL

ECO#

REV

DESCRIPTION

DATE

APPROVAL

ECO#

REV

DESCRIPTION

DATE

APPROVAL

ECO#

REV

DESCRIPTION

DATE

APPROVAL

ECO#

REV

DESCRIPTION

DATE

APPROVAL

ECO#

REV

DESCRIPTION

DATE

APPROVAL

ECO#

REV

DESCRIPTION

DATE

APPROVAL

ECO#

REV

DESCRIPTION

DATE

APPROVAL

ECO#

REV

DESCRIPTION

DATE

APPROVAL

ECO#

REV

DESCRIPTION

DATE

APPROVAL

ECO#

REV

DESCRIPTION

DATE

APPROVAL

ECO#

REV

DESCRIPTION

DATE

APPROVAL

ECO#

REV

DESCRIPTION

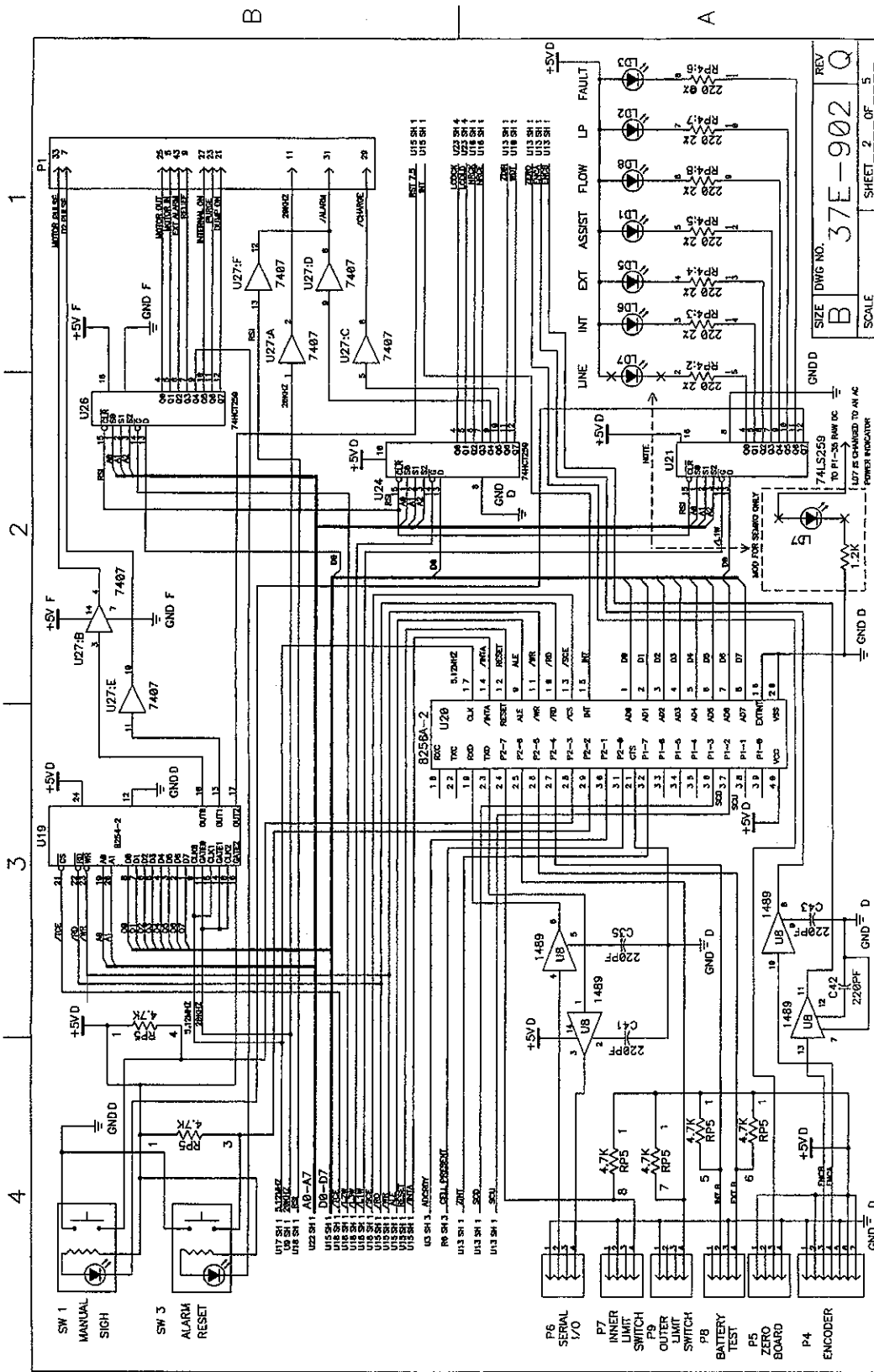
DATE

APPROVAL

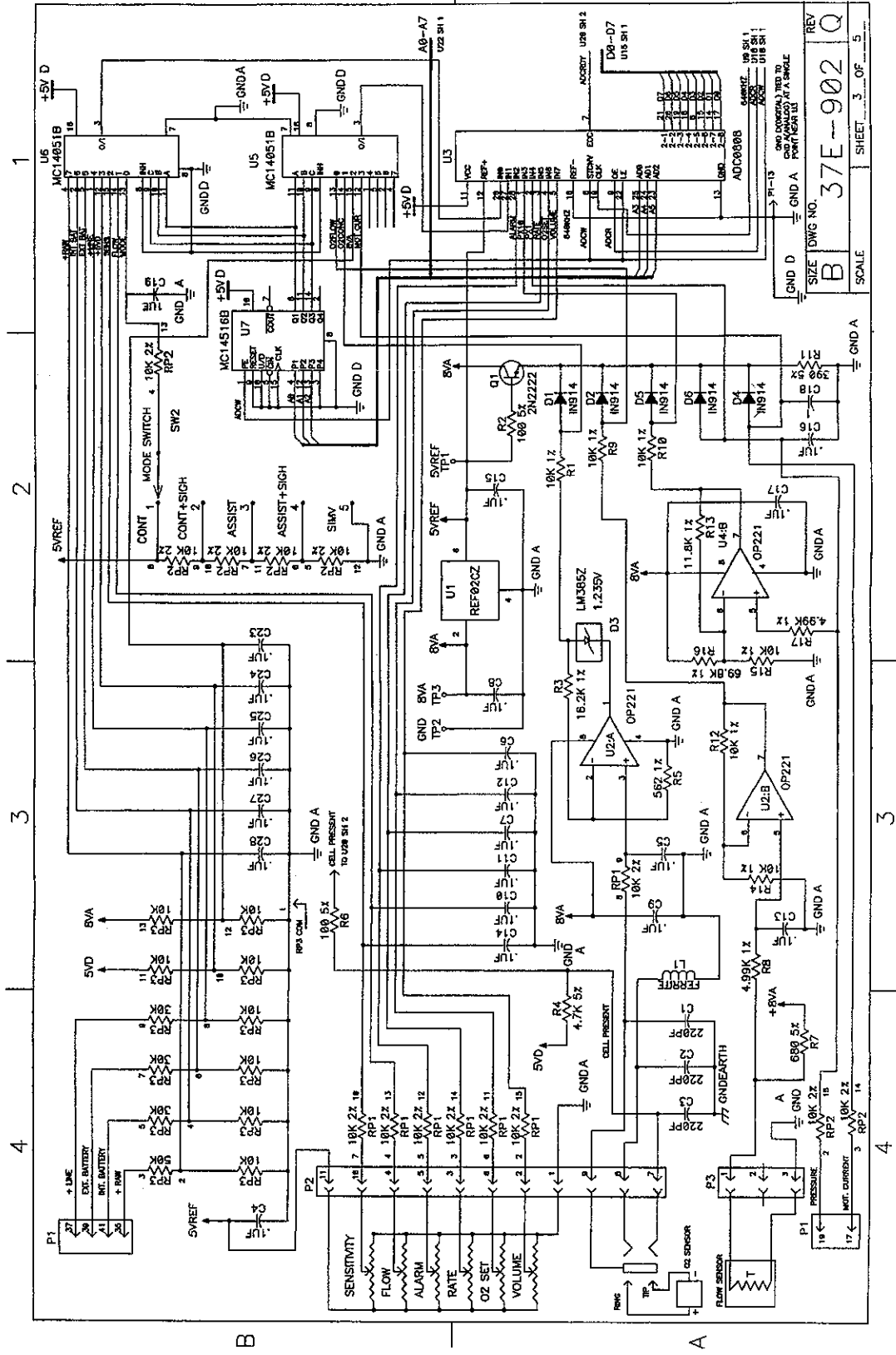
ECO#

REV

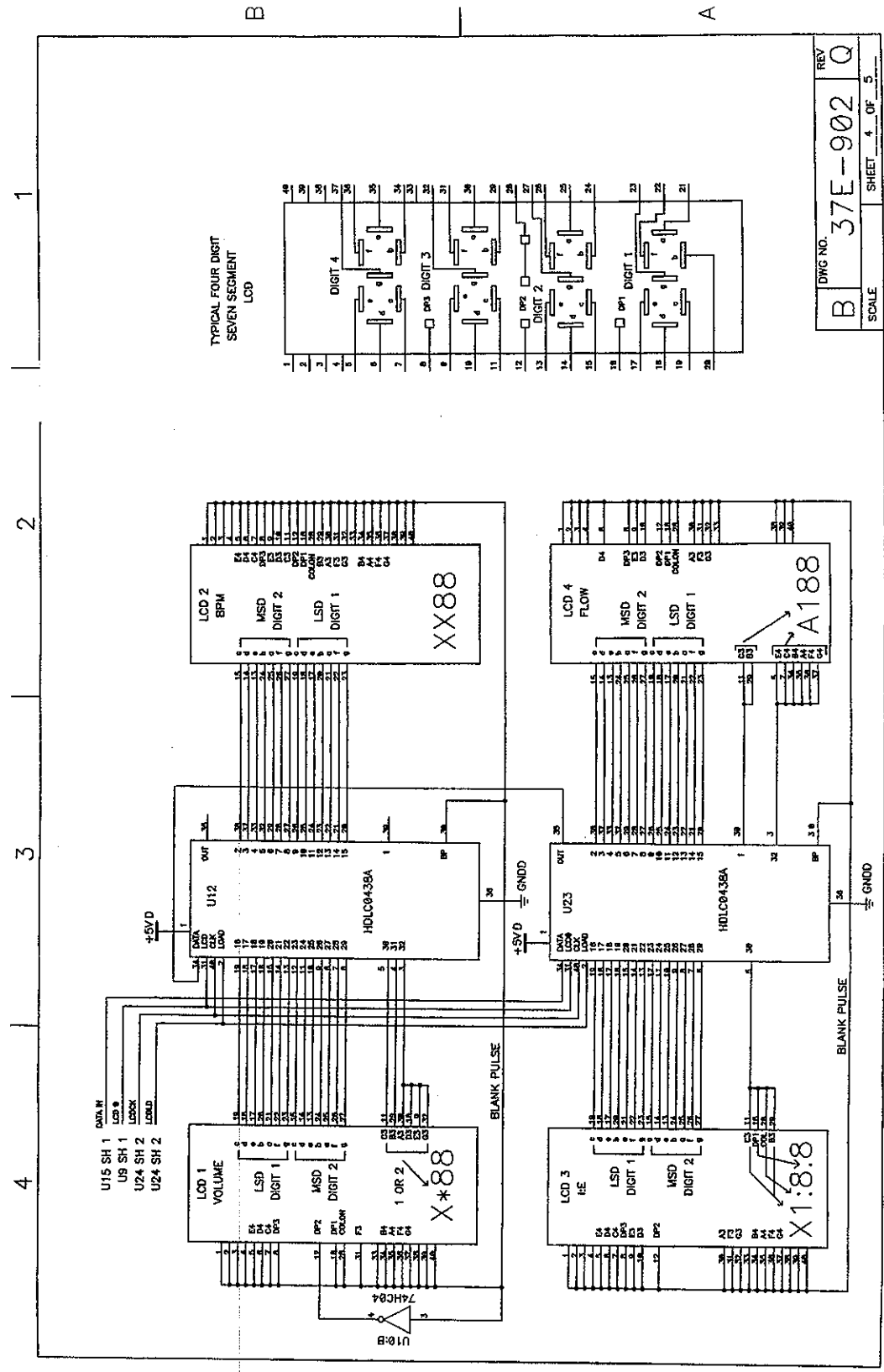
Notes:



Notes:

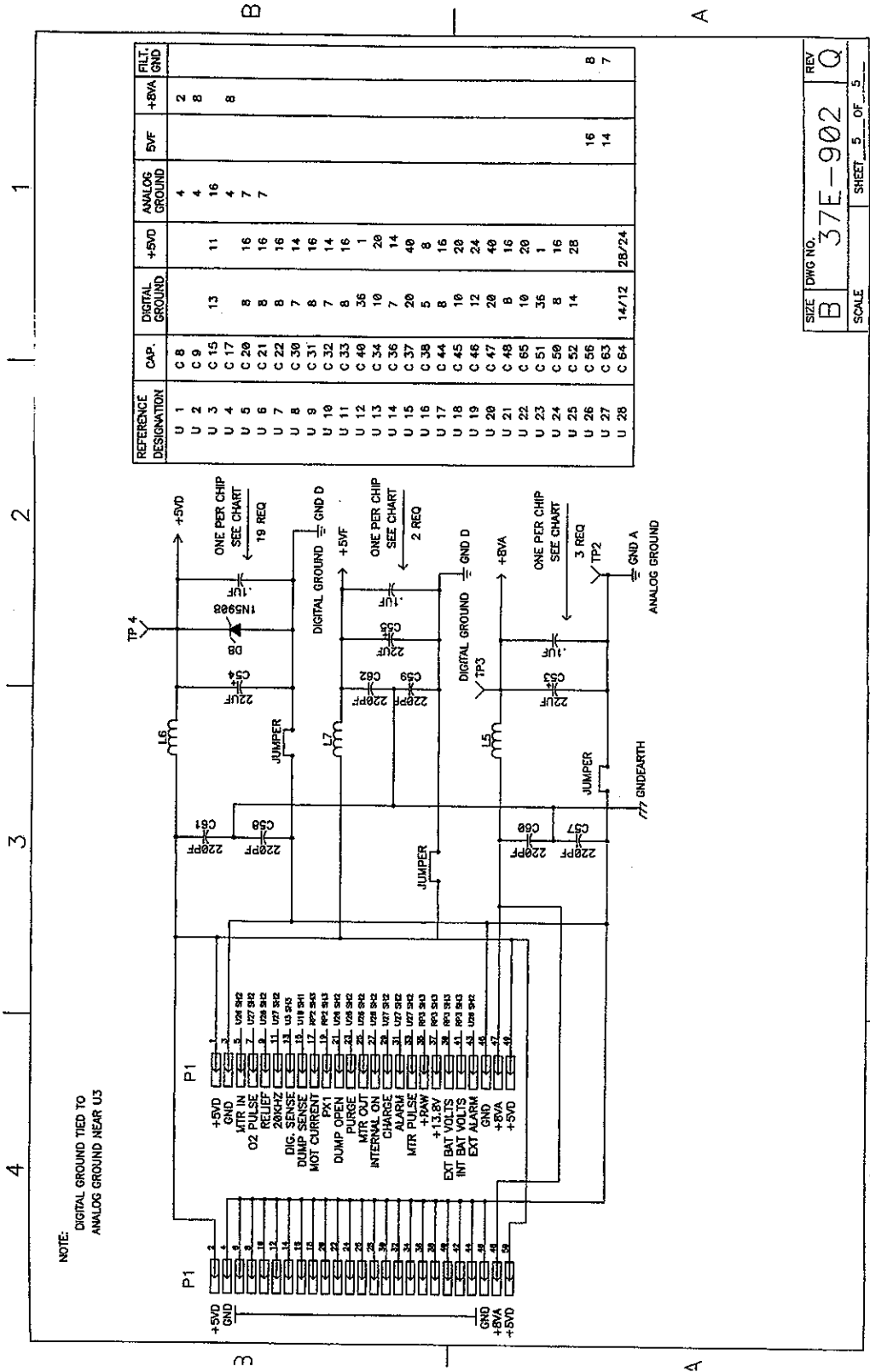


Notes:



B	DWG NO. 37E-902	REV Q
SCALE	SHEET 4 OF 5	

Notes:

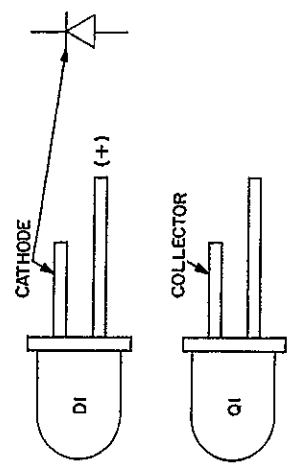
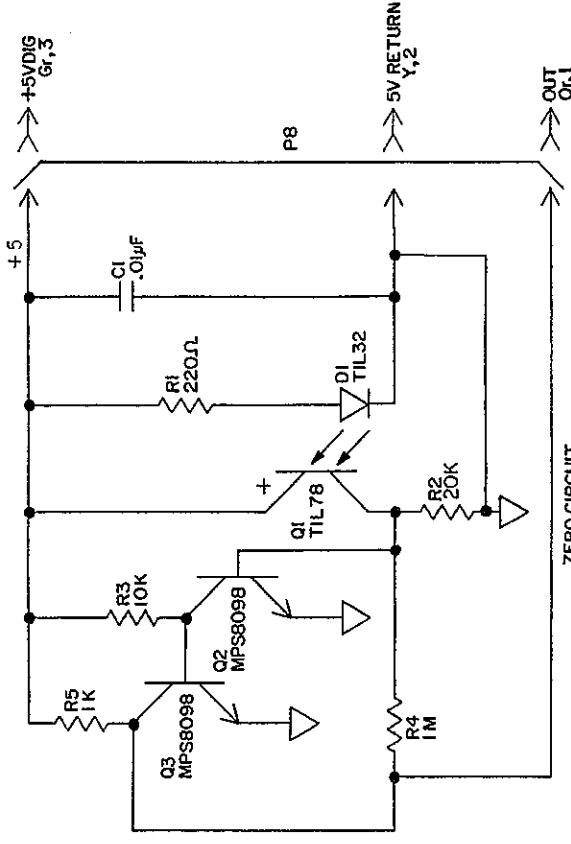


REFERENCE DESIGNATION	CAP.	DIGITAL GROUND	+5VD	ANALOG GROUND	5VF	+5VA GND	FILT. GND
U 1	C 8					2	
U 2	C 9					8	
U 3	C 15	13	11	4			
U 4	C 17			16			
U 5	C 20	8	16	4			
U 6	C 21	8	16	7			
U 7	C 22	8	16	4			
U 8	C 30	7	14	7			
U 9	C 31	8	16				
U 10	C 32	7	14				
U 11	C 33	8	16				
U 12	C 40	36	1				
U 13	C 34	10	20				
U 14	C 36	7	14				
U 15	C 37	20	40				
U 16	C 38	5	8				
U 17	C 44	8	16				
U 18	C 45	10	20				
U 19	C 46	12	24				
U 20	C 47	20	40				
U 21	C 48	8	16				
U 22	C 65	10	20				
U 23	C 51	36	1				
U 24	C 50	8	16				
U 25	C 52	14	28		16		
U 26	C 56				14		
U 27	C 63						
U 28	C 64	14/12	28/24				

SIZE	DWG NO.	REV
B	37E-902	Q
SCALE	SHEET 5	OF 5

Notes:

ECO	REV.	REVISION RECORD	DATE	APPROVED
A06	A	NEW DRAWING	10/30/82	ABD



SCALE: N.T.S.

ALL INFORMATION CONTAINED HEREIN IS UNCLASSIFIED EXCEPT WHERE SHOWN OTHERWISE. THIS DOCUMENT IS THE PROPERTY OF LIFECARE. IT IS TO BE USED FOR THE PURPOSES SPECIFIED AND IS NOT TO BE REPRODUCED, COPIED, OR DISCLOSED TO OTHERS WITHOUT THE WRITTEN CONSENT OF LIFECARE.

DESIGNED BY: J. BAILEY

DRAWN BY: J. BAILEY

DATE: 7/8/81

DATE: 10/30/82

SHEET: 1

SIZE: B

DRAWING NO: 37E-904

REVISION: A

TITLE: ZERO BOARD SCHEMATIC

PLV-102

LIFECARE®



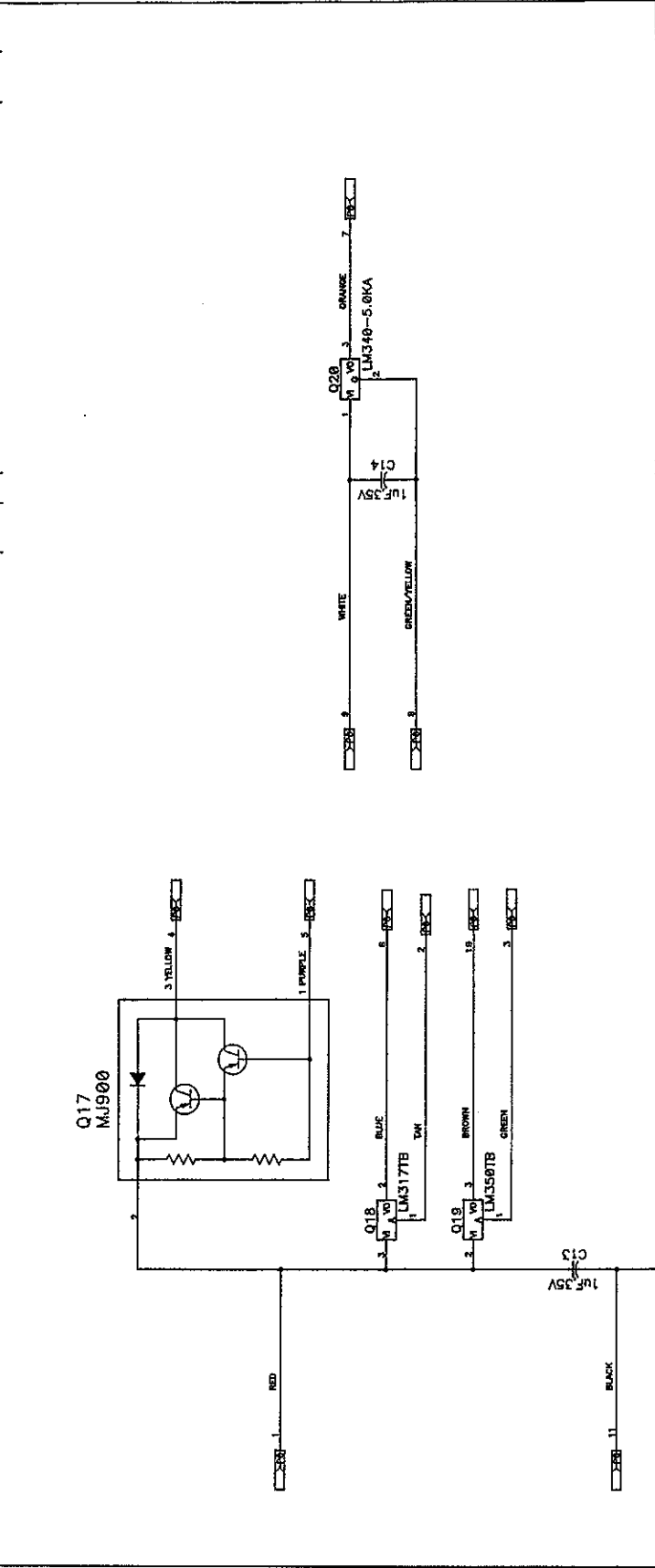
SECTION 14.0

Schematics

Notes:

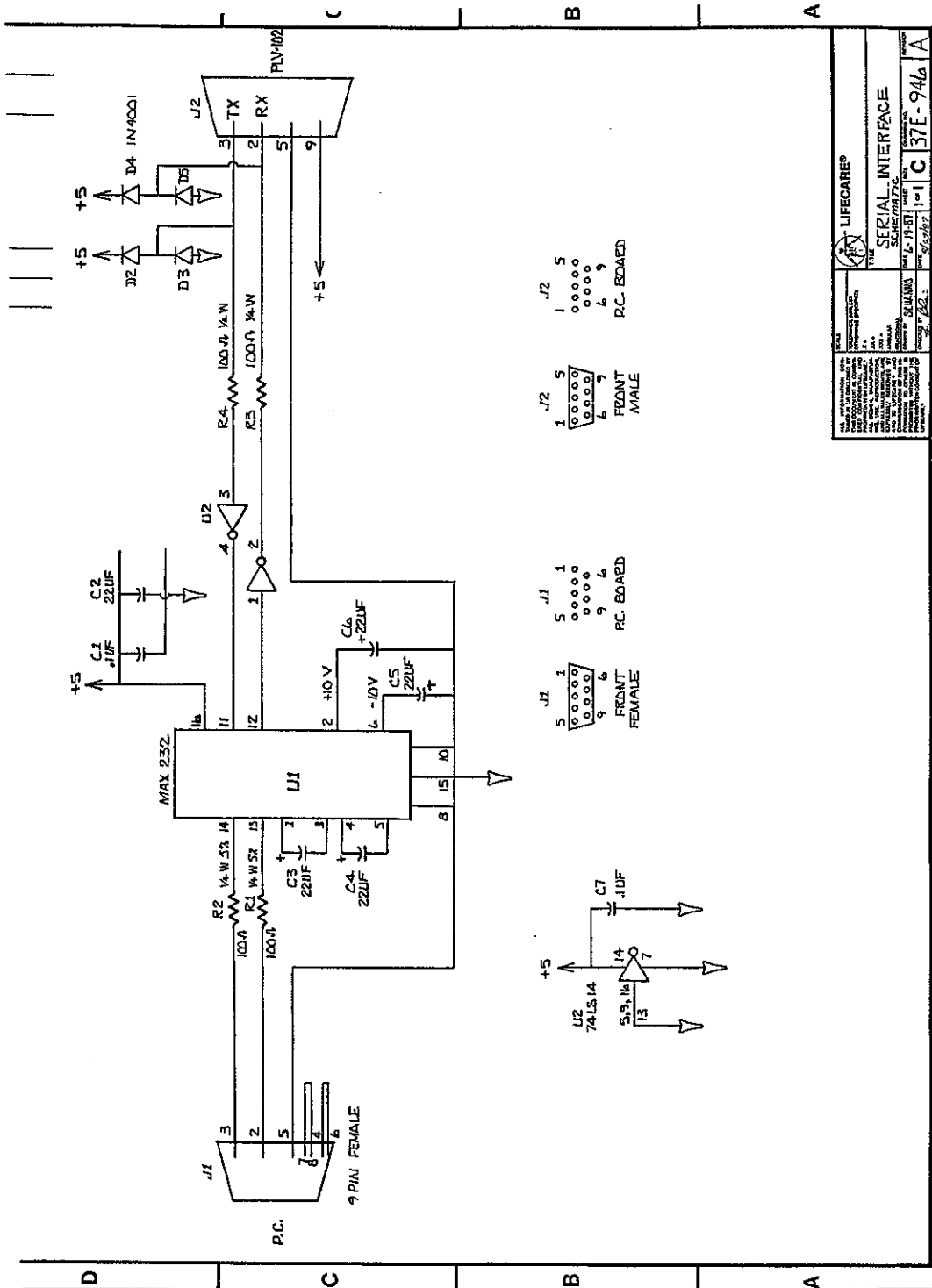
NOTE: UNLESS OTHERWISE SPECIFIED

ECO#	REV	DESCRIPTION	DATE	APPL
274	A	NEW DAW	1/22/75	TS
4072	B	ADD COILS TO WIRES	5/15/75	EU



ECO#	REV	DESCRIPTION	DATE	APPL
274	A	NEW DAW	1/22/75	TS
4072	B	ADD COILS TO WIRES	5/15/75	EU

*** TRADE SECRET *** UNAUTHORIZED COPYING PROHIBITED	DRAWN BY J LUTZ	DATE 4/21/72	LIFECARE © 655 Aspen Ridge Drive Lafayette, CO 80026 303/666-9234
DO NOT SCALE DRAWING INTERPRET DWG PER ANSI Y14	CHECKED BY S. Howard	DATE 5/5/74	TITLE ASSY, BULKHEAD, HEATSINK PLV-102
TOLERANCES: .XX = ± .XXX = ± ANGLES ±	APPROVED BY S. Howard	DATE 5/5/74	SIZE DWG NO. 37E-916
			REV B
			SCALE
			SHEET 1 OF 1

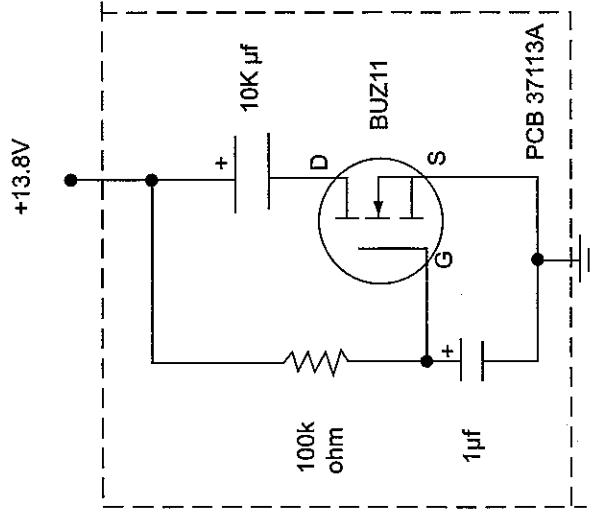


Notes:

LIFECARE®	
THE SERIAL INTERFACE	
REV. 1	DATE 8-19-81
DESIGNED BY SQUAWAN	DRAWN BY 1-1
NO. 37E-946A	REV. 1

Notes:

ECO#	ltr	Revision Record	Date	Appvl
2187	A	New Drawing	4/4/89	R. Chu



SIGNATURES	DATE	655 Aspen Ridge Drive Lafayette, CO 80026 303/666-9234		
DWG J. Crowder	3/9/89	TITLE SCHEMATIC, CAP AUX BD		
CHK'D R. Chu	4/3/89			
MATERIAL: SEE ABOVE		SCALE	DWG NO	REV
TOLERANCES: N/A		NTS	37E-970	A
FINISH: N/A		FILE: 37E-970A SHEET# 1 OF 1 SHEETS		

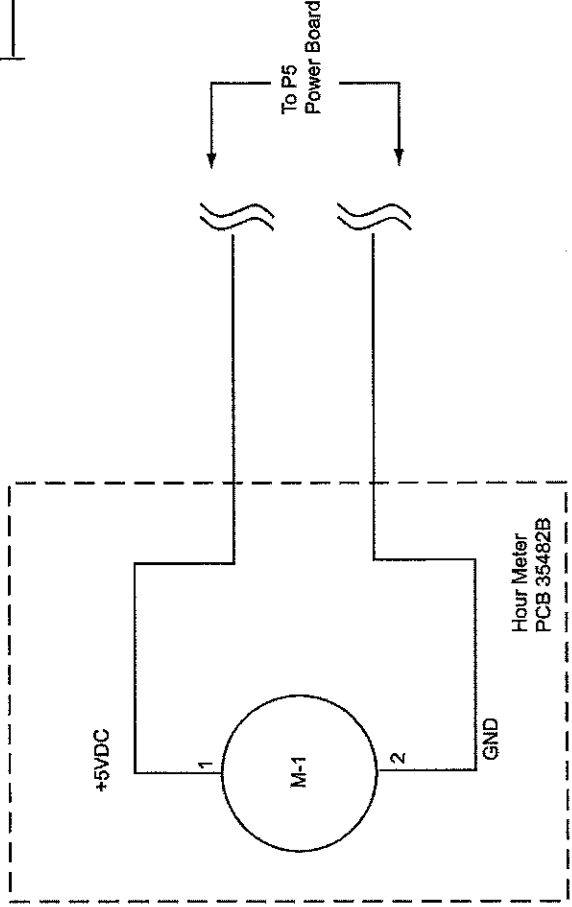


SECTION 14.0

Schematics

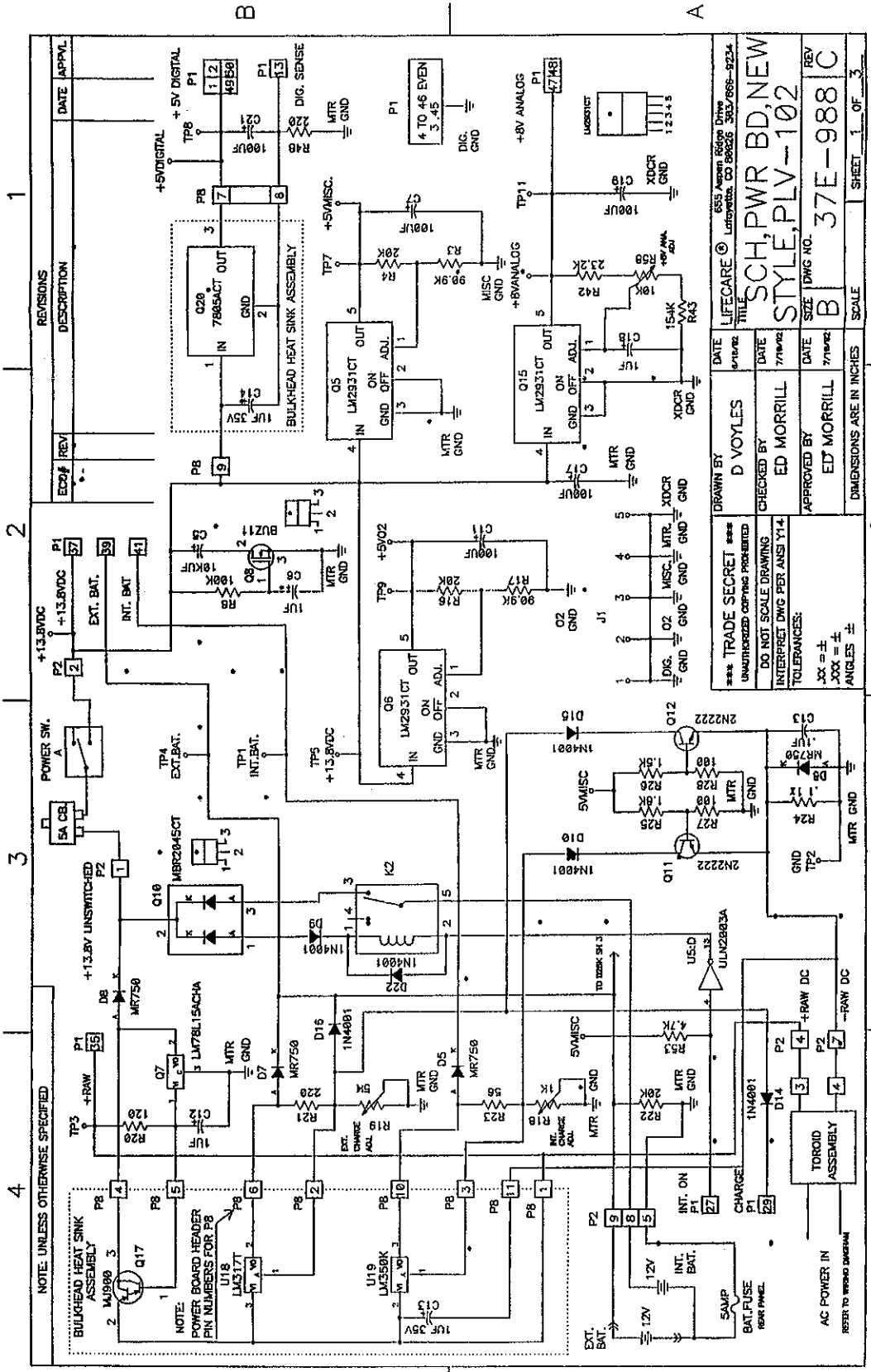
Notes:

ECC#	lfr	Revision Record	Date	Appvl
2187	b	New Drawing	4/4/89	R. Chu



SIGNATURES	DATE	655 Aspen Ridge Drive Lafayette, CO 80026 303/666-9234		
DWG J. Crowder	3/9/89	TITLE	SCHEMATIC, HOUR METER, PLV-102	
CHK'D R. Chu	4/3/89	SCALE	NTS	DWG NO 37E-970
MATERIAL:	SEE ABOVE	FINISH:	N/A	REV B
TOLERANCES:	N/A	FILE:	37E-975B	SHEET# 1 OF 1 SHEETS

Notes:



REV#	REV	DESCRIPTION	DATE	APPL.

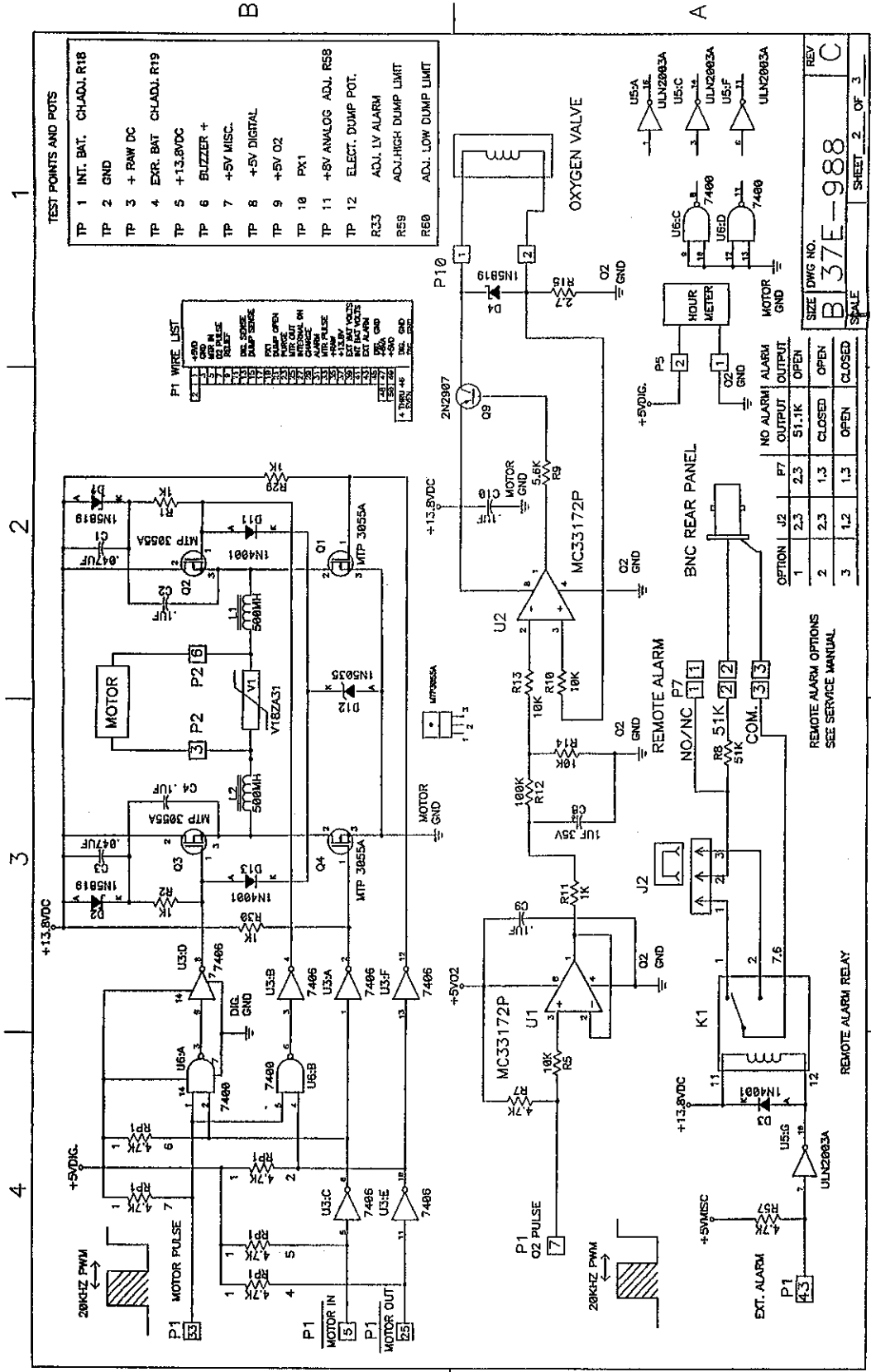
DATE	1/1/82	DRAWN BY	D VOYLES
DATE	7/1/82	CHECKED BY	ED MORRILL
DATE	7/1/82	APPROVED BY	ED MORRILL

*** TRADE SECRET ***
 UNAUTHORIZED COPIES PROHIBITED
 DO NOT SCALE DRAWING
 INTERPRET DIMS PER ANSI Y14.4
 TOLERANCES:
 .XX = ±
 .XXX = ±
 ANGLES ±

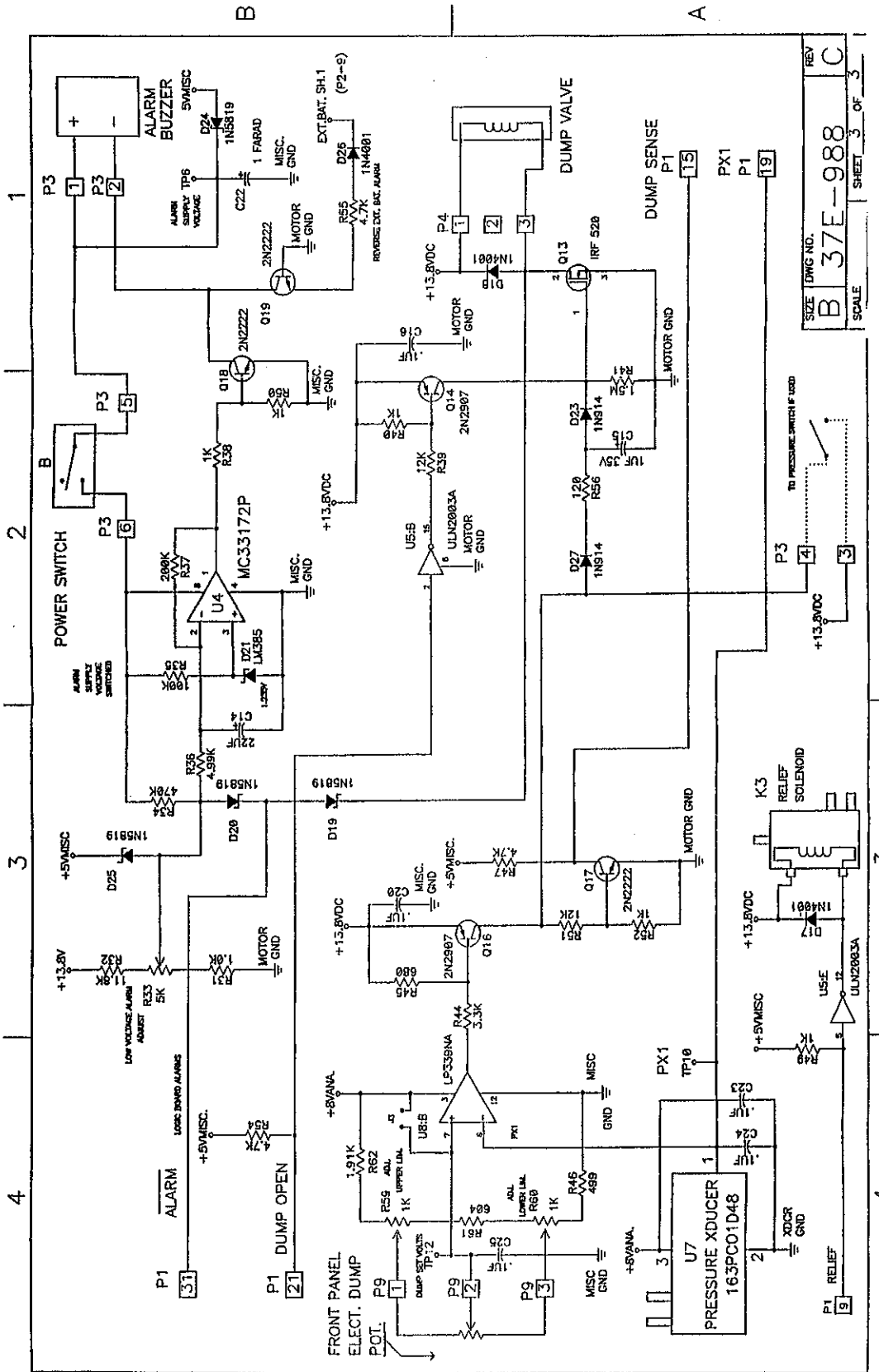
DATE 1/1/82
 TITLE SCH, PWR BD, NEW
 STYLE, PLV-102
 SIZE B
 DIMS HO. 37E-988 C
 REV 1 OF 3

DATE 1/1/82
 TITLE SCH, PWR BD, NEW
 STYLE, PLV-102
 SIZE B
 DIMS HO. 37E-988 C
 REV 1 OF 3

Notes:



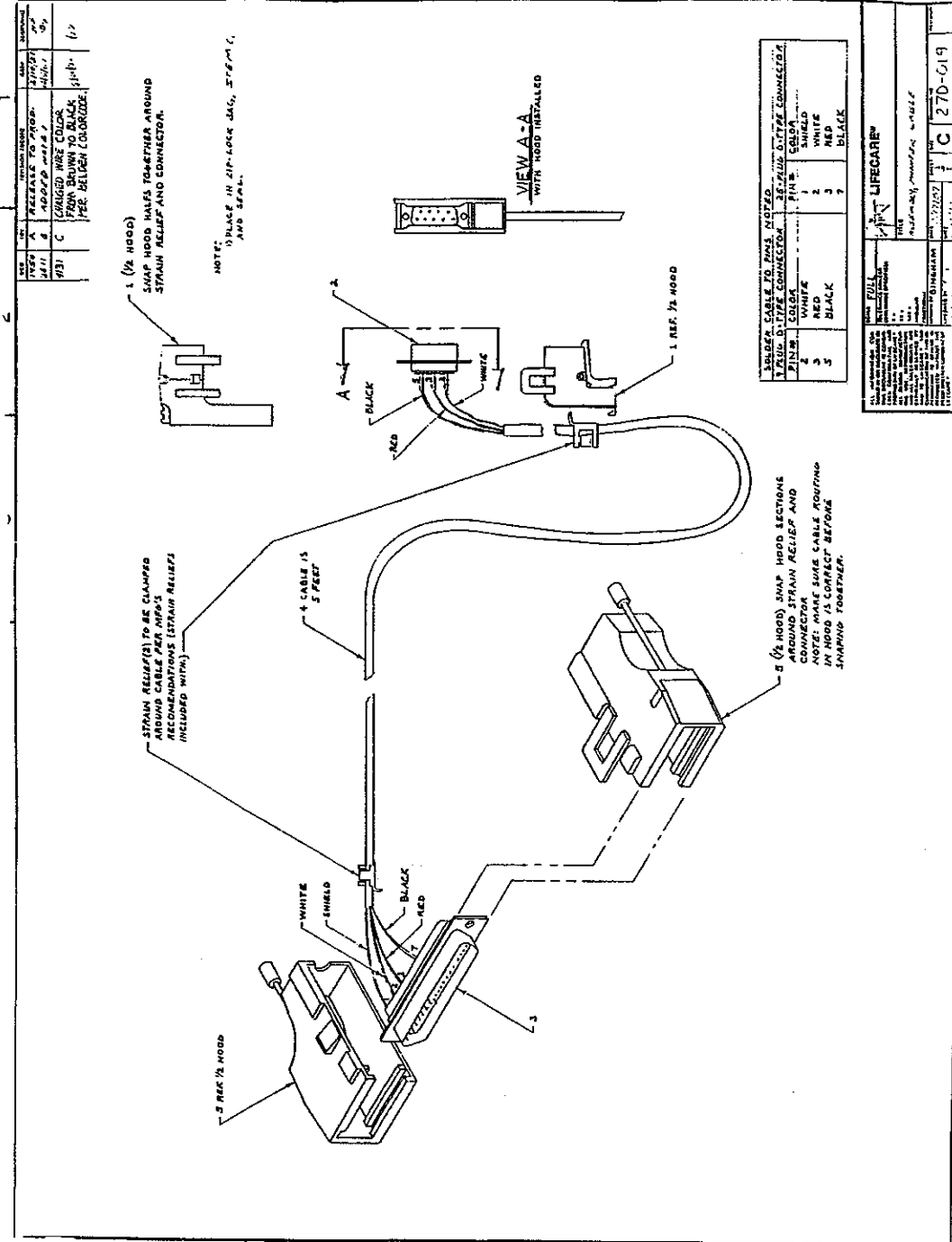
Notes:



SIZE	DWG NO.	REV
B	37E-988	C
SCALE	SHEET	OF
	3	3

Notes:

REV	DATE	DESCRIPTION	BY	CHKD
1		RELEASE TO PROD.	MM	MM
2		ADDED WITH 1	MM	MM
3		CHANGED WIRE COLOR FROM BROWN TO BLACK PER BELDEN COLOR CODE	MM	MM



WELDED CABLE TO PINS NOTED

5-PIN D-TYPE CONNECTOR	5-PIN D-TYPE CONNECTOR	WIRE COLOR	PIN #
1	1	WHITE	SHIELD
2	2	RED	BLACK
3	3	BLACK	BLACK
4	4	WHITE	WHITE
5	5	BLACK	BLACK

LIFECARE®

RESPIRONICS®

DATE: 11/10/02

PROJECT: C 270-019

REVISIONS			
ECO	REV	DESCRIPTION	DATE
5585	A	DOCUMENT RELEASE	5-16-97

**WORKING COPY
THIS DOCUMENT WILL
NOT BE UPDATED**

NOT STAMPED IN CONFORMANCE
WITH THE AUTOMATIC DOCUMENT

NOTES, UNLESS OTHERWISE SPECIFIED:

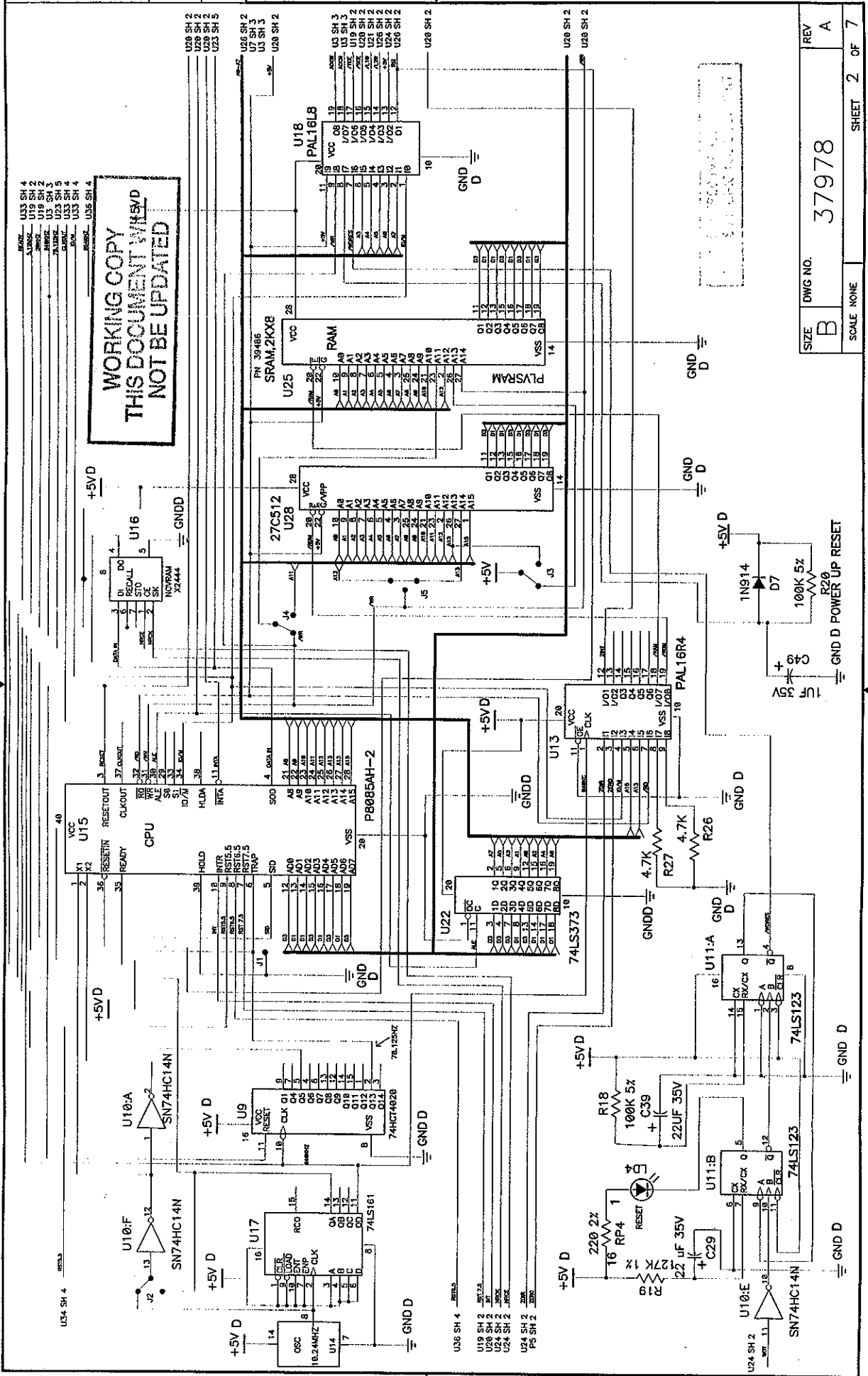
TELEGRAPHIC INFO: A4 = 2.00 A3 = 2.00 A2 = 2.00 A1 = 2.00 DO NOT SCALE DRAWING UNLESS OTHERWISE SPECIFIED DIMENSIONS ARE IN INCHES	APPROVALS DRAWN: J SJOW CHECKED: <i>[Signature]</i> APPROVED: <i>[Signature]</i> DATE: 05.06.97 DATE: 5/7/97 DATE: 5-16-97	RESPIRONICS Colorado Inc. 1401 W. 172nd AVE. WESTMINSTER, CO 80234-3421 • USA 303/457-9234 • FAX 303/765-9000	TITLE SCHEM, PLV102 - LOGIC BD, W/BKLT	SHEET NO. 37978	REV A
SCALE: NONE		SHEET 1 OF 7			

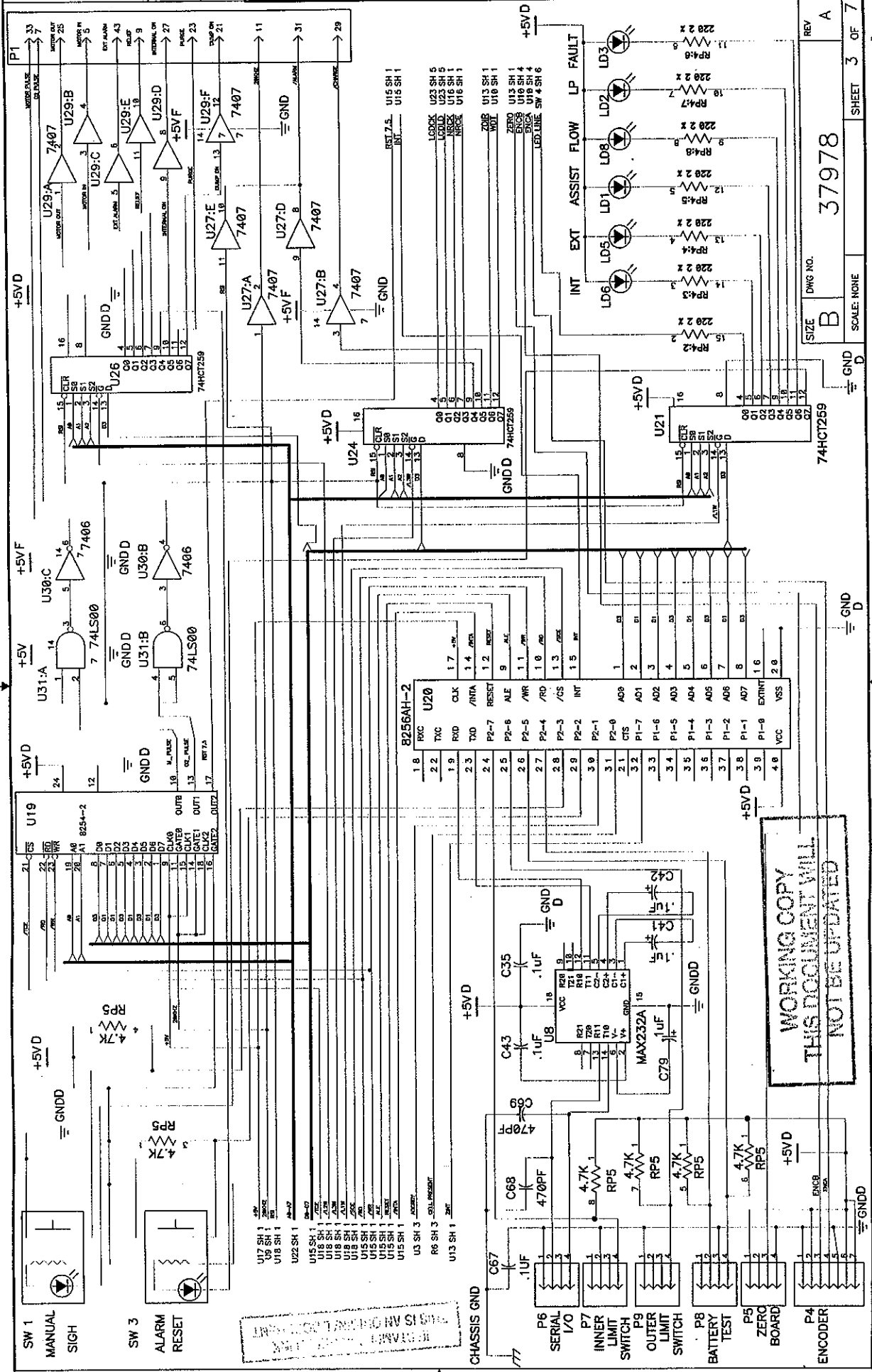
CONFIDENTIAL AND PROPRIETARY INFORMATION
 ALL INFORMATION CONTAINED IN OR DERIVED FROM THIS DOCUMENT IS
 CONSIDERED TO BE CONFIDENTIAL AND PROPRIETARY OF RESPIRONICS.
 ALL DESIGN, MANUFACTURING, USE AND REPRODUCTION RIGHTS
 RESERVED TO THE INFORMATION AND ALL SALES RIGHTS ASSIGNED
 HEREIN. ALL RIGHTS RESERVED BY AND TO RESPIRONICS.
 USE, REPRODUCTION OR DISTRIBUTION OF THIS INFORMATION, OR
 COMMUNICATION OF THIS INFORMATION TO OTHERS, IS PROHIBITED
 WITHOUT THE PRIOR WRITTEN CONSENT OF RESPIRONICS.

- SPECIAL REQUIREMENTS: CHECK ALL APPLICABLE BLOCKS**
- VENDOR ITEM DRAWING
 - SOURCE CONTROL DRAWING
 - ESD SENSITIVE ASSY/COMPONENT
 - TEST AGENCY CONTROLLED ASSY/COMPNT
 - TECHNICAL FILE DOCUMENT
 - CRITICAL COMPONENT
 - ALTERED ITEM DRAWING
 - SOFTWARE DRAWING

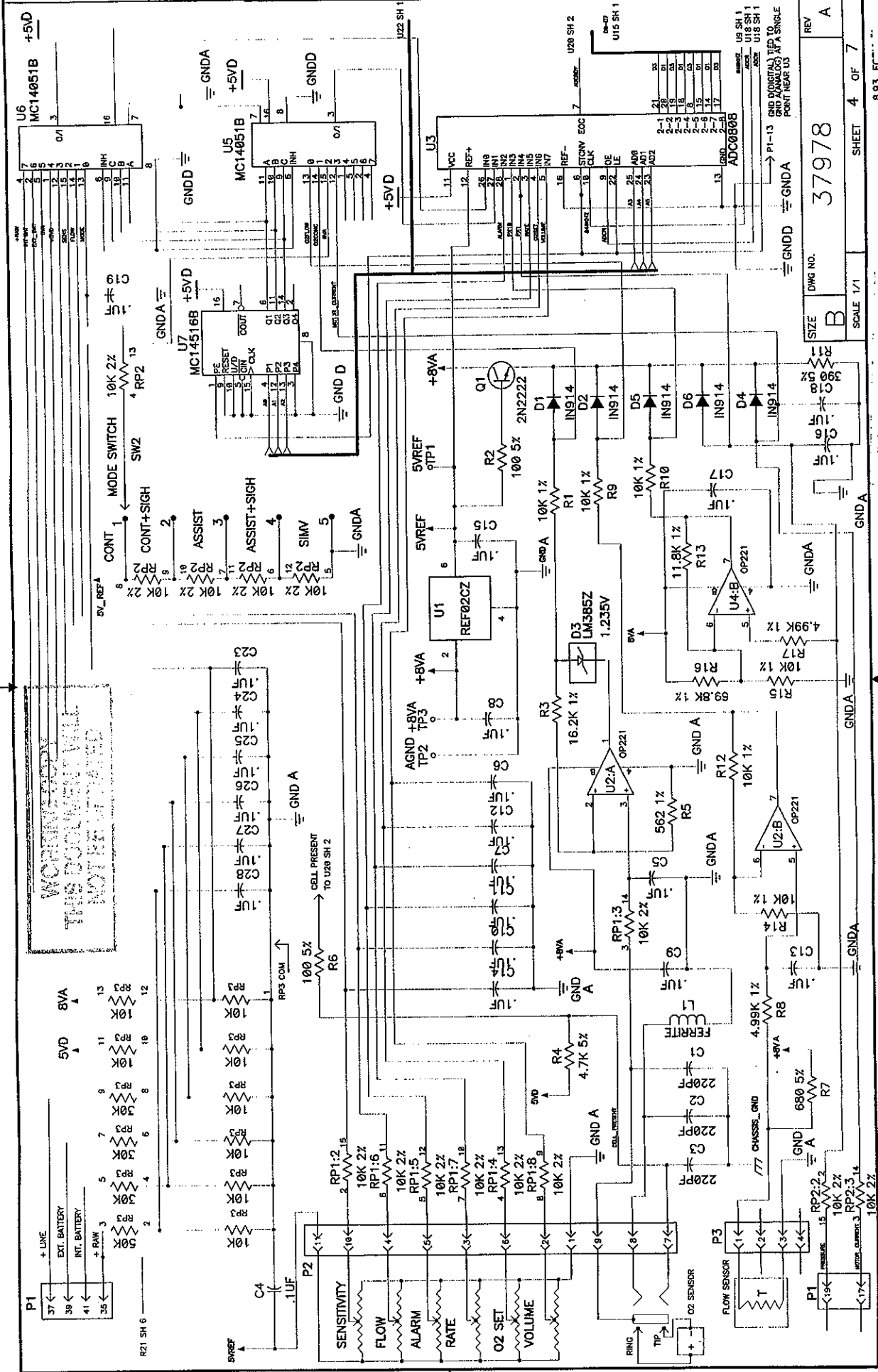
FABRICATION PROCESSES,
 PROCEDURES AND
 SPECIFICATIONS NOT
 OTHERWISE SPECIFIED
 ARE CONTROLLED BY
 THE LATEST VERSION
 OF THE RESPIRONICS
 COLORADO, INC.
 WORKMANSHIP
 STANDARDS, FORM 381.

**WORKING COPY
THIS DOCUMENT WILL
NOT BE UPDATED**





REV A
 SIZE B
 DWG NO. 37978
 SCALE NONE
 SHEET 3 OF 7
 REV A

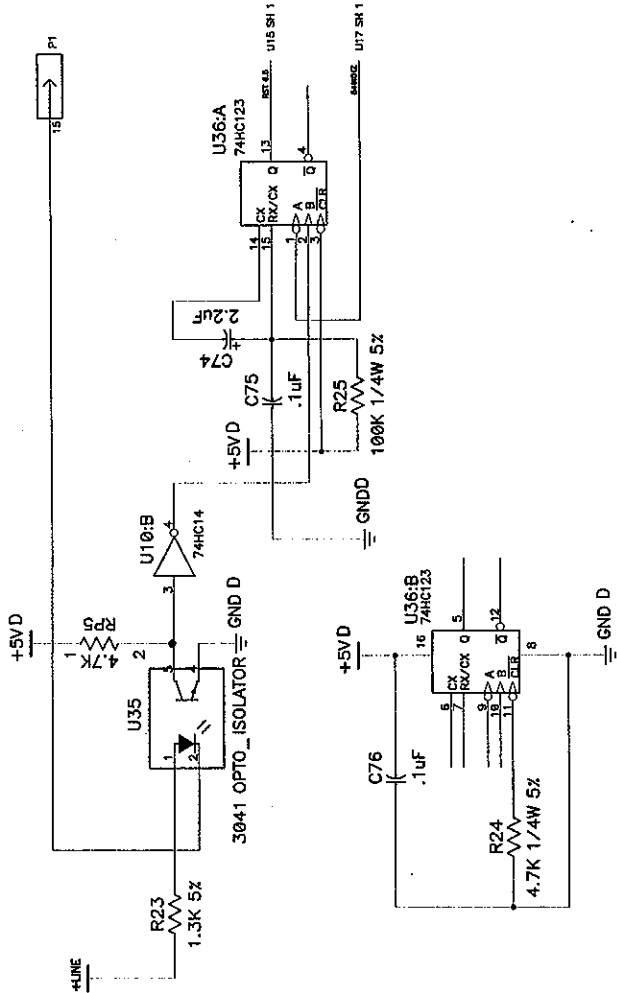
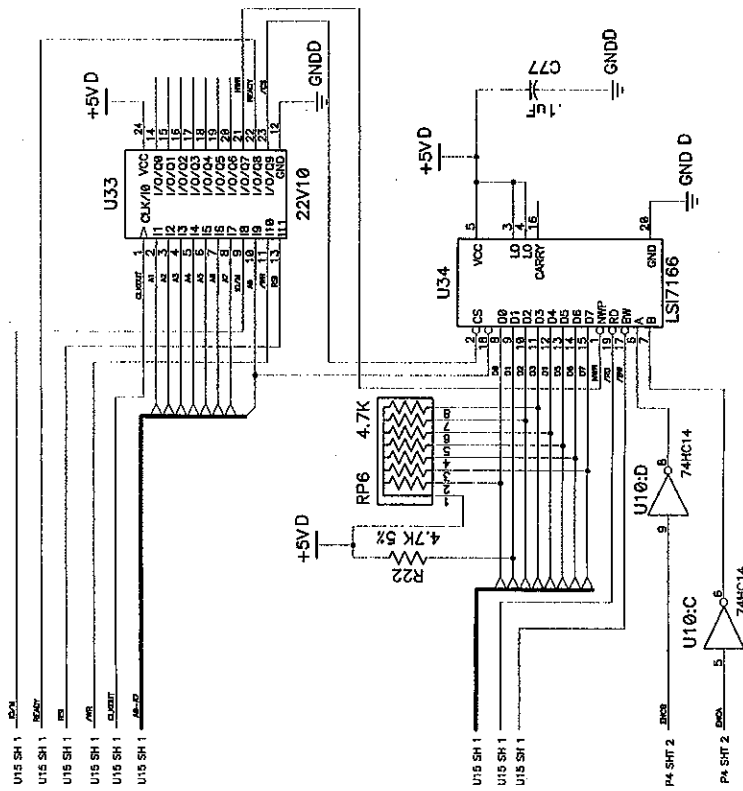


WORKING COPY
 THIS DOCUMENT WILL
 NOT BE REPRODUCED

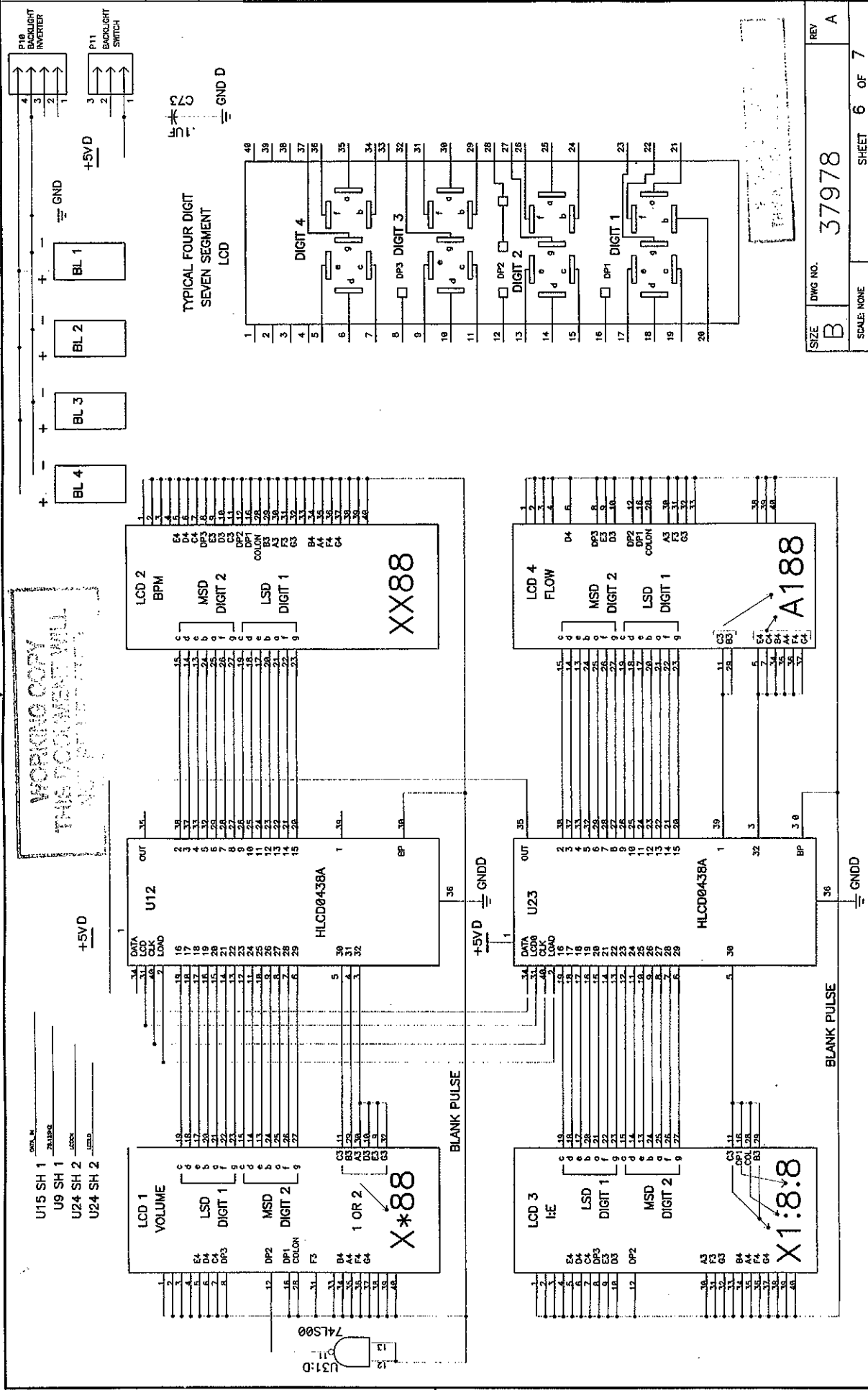
REV A
 U6 MC14051B +5VD
 U5 MC14051B +5VD
 U7 MC14516B +5VD
 U3 ADC0808B
 U1 REF02CZ
 U2 OP221
 U3 OP221
 U4 OP221
 U3 LM385Z
 U2 OP221

SIZE B
 DWG NO. 37978
 SCALE 1/1
 SHEET 4 OF 7

WORKING COPY
THIS DOCUMENT WILL
NOT BE UPDATED



START HERE TO SEE THE
CIRCUIT BOARD



**WORKING COPY
THIS DOCUMENT WILL
NOT BE UPDATED**

NOTE:
DIGITAL GROUND TIED TO
ANALOG GROUND NEAR U3

REFERENCE DESIGNATION	CAP.	DIGITAL GROUND	+5VD	ANALOG GROUND	5VF	+8VA
U 1	C 8					2
U 2	C 9					8
U 3	C 66					8
U 4	C 17	13	11	4		
U 5	C 20	8	16	16		
U 6	C 21	8	16	16		
U 7	C 22	8	16	16		
U 8	C 30	15	16	16		
U 9	C 31	8	16	16		
U 10	C 32	7	14	14		
U 11	C 33	8	16	16		
U 12	C 40	36	1			
U 13	C 34	10	20			
U 14	C 36	7	14			
U 15	C 37	20	40			
U 16	C 38	5	8			
U 17	C 44	8	16			
U 18	C 45	10	20			
U 19	C 46	12	24			
U 20	C 47	20	40			
U 21	C 48	8	16			
U 22	C 65	10	20			
U 23	C 51	36	1			
U 24	C 50	8	16			
U 25	C 52	14	28			
U 26	C 56	8	16			
U 27	C 63	7			14	
U 28	C 64	14	28			
U 29	C 70	7			14	
U 30	C 71	7			14	
U 31	C 72	7			14	
U 33	C 78	12	24			
U 34	C 77	20	5			
U 36	C 76	8	16			

PLV-102 ORIGINAL

SIZE **B** DWG NO. **37978** REV **A**
SCALE: NONE SHEET **7** OF **7**

