



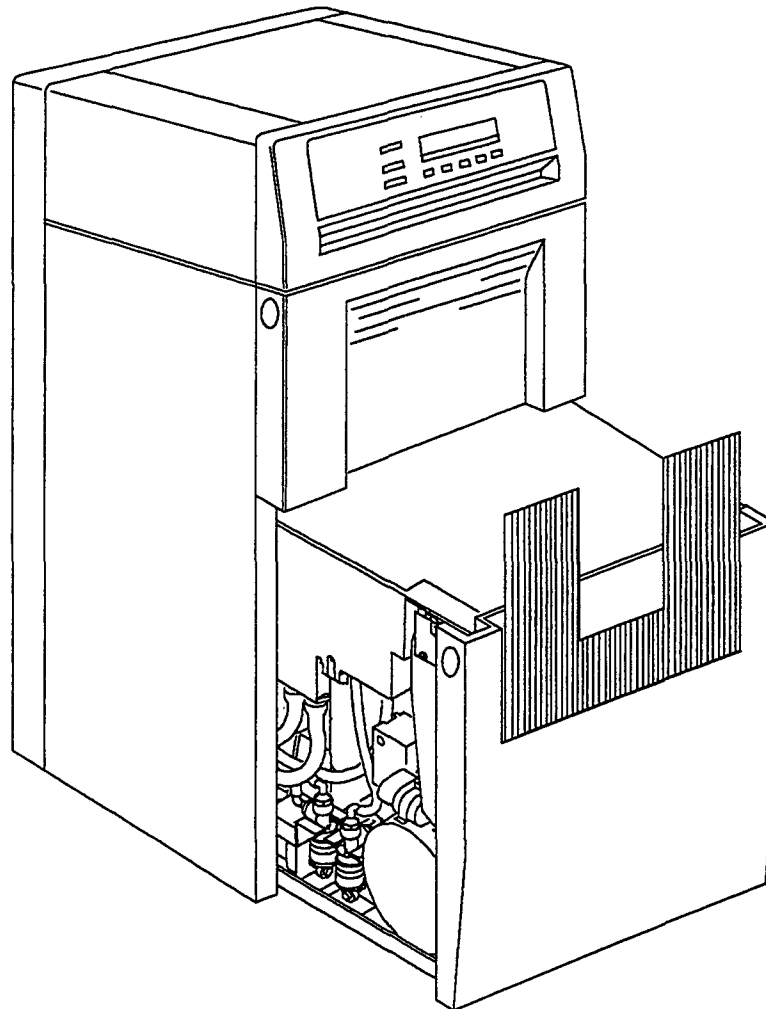
Publication No. CL3058-1

5/94

Supersedes DG3058-2

4/91

**COMPONENT LOCATOR**  
for the  
***Kodak X-Omat 270 RA PROCESSOR***  
in a  
***Kodak X-Omat MULTILOADER 300***



P104\_0192DA

#### PLEASE NOTE

The information contained herein is based on the experience and knowledge relating to the subject matter gained by Eastman Kodak Company prior to publication.

No patent license is granted by this information.

Eastman Kodak Company reserves the right to change this information without notice, and makes no warranty, express or implied, with respect to this information. Kodak shall not be liable for any loss or damage, including consequential or special damages, resulting from the use of this information, even if loss or damage is caused by Kodak's negligence or other fault.

#### CAUTION



This equipment includes parts and assemblies sensitive to damage from electrostatic discharge. Use caution to prevent damage during all service procedures.

## Table of Contents

Description	Page
Component Lists .....	3
Battery - BT .....	3
Circuit Boards - Bd .....	3
Connectors - P/J .....	3
Diodes - CR .....	3
Filters - FL .....	4
Fuses - F .....	4
Heaters - HR .....	4
Integrated Circuits - U .....	4
Jacks (Receptacles) - J .....	4
LED/Indicators - DS .....	4
Motors - B .....	4
Power Supply - A .....	4
Pumps - See Motors .....	5
Relays - K .....	5
Sensors/Switches - S .....	5
Solenoids/Inductors - L .....	5
Solid State Relays - SSR .....	5
Terminal Blocks - TB .....	5
Test Points - TP .....	6
Thermistors - RT .....	6
Transformers - T .....	6

## Component Lists

### Battery - BT

	Page
BT501 Microprocessor Battery .....	10, 11

### Circuit Boards - Bd

	Page
500 Bd Microprocessor Circuit Board .....	10, 11

### Connectors - P/J

	Page
P/J2 AC Electrical Box .....	10
P/J3 DC Electrical Box .....	10
P/J5 Universal Film Detector Interconnect Electrical Box to UFD .....	10
P/J6 RS 232 Connector.....	10
P/J9 Quad Power Supply - AC Input .....	10
P/J10 Quad Power Supply - DC Output .....	10
P/J11 RS 232 Connector on Electrical Box .....	10
P/J12 Fixer/Developer Recirculation Pump.....	8
P/J14 Replenishment Calibration Switch .....	9
P/J15 Developer Replenishment Pump .....	9
P/J16 Fixer Replenishment Pump.....	9
P/J17 Autotransformer.....	8
P/J18 Blower Motor .....	9
P/J19 Fixer Heater.....	8
P/J20 Developer Heater .....	8
P/J21 Dryer Heater.....	9
P/J22 DC Drive Motor .....	8
P/J23 Developer Cooling Solenoid.....	8
P/J24 Dryer Air Flow Switch .....	9
P/J26 Developer Thermistor.....	8
P/J27 Fixer Thermistor .....	8
P/J28 Dryer Thermistor .....	9
P/J29 Multiloader 300 Interface.....	9
P/J30 Water Input Solenoid.....	9
P/J31 Drive Side Film Detector Switch.....	7
P/J32 Non-Drive Side Film Detector Switch .....	7
P/J34 Power Supply Cooling Fan .....	10
P/J501 Microprocessor Circuit Board.....	11
P/J502 Microprocessor Circuit Board.....	11
P/J503 Microprocessor Circuit Board.....	11
P/J504 Microprocessor Circuit Board.....	11
P/J505 Microprocessor Circuit Board.....	11
P/J506 Microprocessor Circuit Board.....	11
P/J507 Microprocessor Circuit Board.....	11
P/J508 Microprocessor Circuit Board.....	11
P/J509 RS 232 Serial Port.....	11

### Diodes - CR

	Page
CR1 Water Input Solenoid.....	9
CR2 Developer Cooling Solenoid.....	8

## Filters - LF

	Page
FL1 EMI Line Filter .....	8

## Fuses - F

	Page
F1 Motors/Pumps .....	10
F2 Developer/Fixer Heater .....	10
A1 F1 DC Power Supply .....	10

## Heaters - HR

	Page
HR1 Developer Heater .....	8
HR2 Fixer Heater .....	8
HR3 Dryer Heater .....	9

## Integrated Circuits - U

	Page
U517 E2 PROM, Language Program #1 .....	11
U518 E2 PROM, Language Program #2 .....	11
U519 E2 PROM, Main Program .....	11
U520 E2 PROM, Bootstrap Memory .....	11

## Jacks (Receptacles) - J

	Page
ESD Jack .....	10

## LED/Indicators - DS

	Page
DS1 Dryer Heater Relay LED .....	11
DS2 Dryer Blower Relay LED .....	11
DS3 Recirculation Pump Relay LED .....	11
DS4 Developer/Fixer Heater Relay LED .....	11
DS5 Accessory/Safelight Relay LED .....	11
DS6 Drive Motor Relay LED .....	11
DS7 500 Circuit Board Status Indicator .....	11

## Motors - B

	Page
B1 Dryer Blower Motor .....	9
B2 Power Supply Cooling Fan .....	10
B3 Developer Replenishment Pump .....	9
B4 Fixer Replenishment Pump .....	9
B5 Recirculation Pump .....	8
B6 DC Drive Motor .....	8

## Power Supply - A

	Page
A1 Quad Power Supply .....	10
A2 DC Motor Controller .....	10

## **Pumps - See Motors**

### **Relays - K**

	Page
K1 Dryer Heater Relay .....	10
K501 Dryer Heater Relay .....	11
K502 Dryer Blower Motor Relay .....	11
K503 Recirculation Pump Relay .....	11
K504 Developer Fixer Heater Relay .....	11
K505 Safelight/Accessory Relay .....	11
K506 Drive Motor Controller Relay .....	11

### **Sensors/Switches - S**

	Page
S1 Drive Side Detector Switch .....	7
S2 Non-Drive Side Detector Switch .....	7
S3 Dryer Air Flow Switch .....	9
S5 Replenishment Calibration Switch .....	9
S6 Dryer Overtemperature Thermostat .....	9
S7 Developer Level Sensor Probe .....	9
S8 Fixer Level Sensor Probe .....	9
S501 Microprocessor Configuration Switch .....	11
S502 Microprocessor Reset Switch .....	11

### **Solenoids/Inductors - L**

	Page
L1 Water Input Solenoid .....	9
L2 Developer Cooling Solenoid .....	8
L3 Developer Heater Inductor .....	10
L4 Dryer Heater Inductor .....	10
L5 Fixer Heater Inductor .....	10

### **Solid State Relays - SSR**

	Page
SSR-U1 Developer Heater .....	10
SSR-U2 Developer Replenishment Pump .....	10
SSR-U3 Dryer Heater .....	10
SSR-U4 Fixer Replenishment Pump .....	10
SSR-U5 Fixer Heater .....	10

### **Terminal Blocks - TB**

	Page
TB2 Power Selection .....	8
TB3 Power Selection .....	8
TB4 AC Power - Electrical Box .....	10
TB5 DC Electronics - Electrical Box .....	10

### Test Points - TP

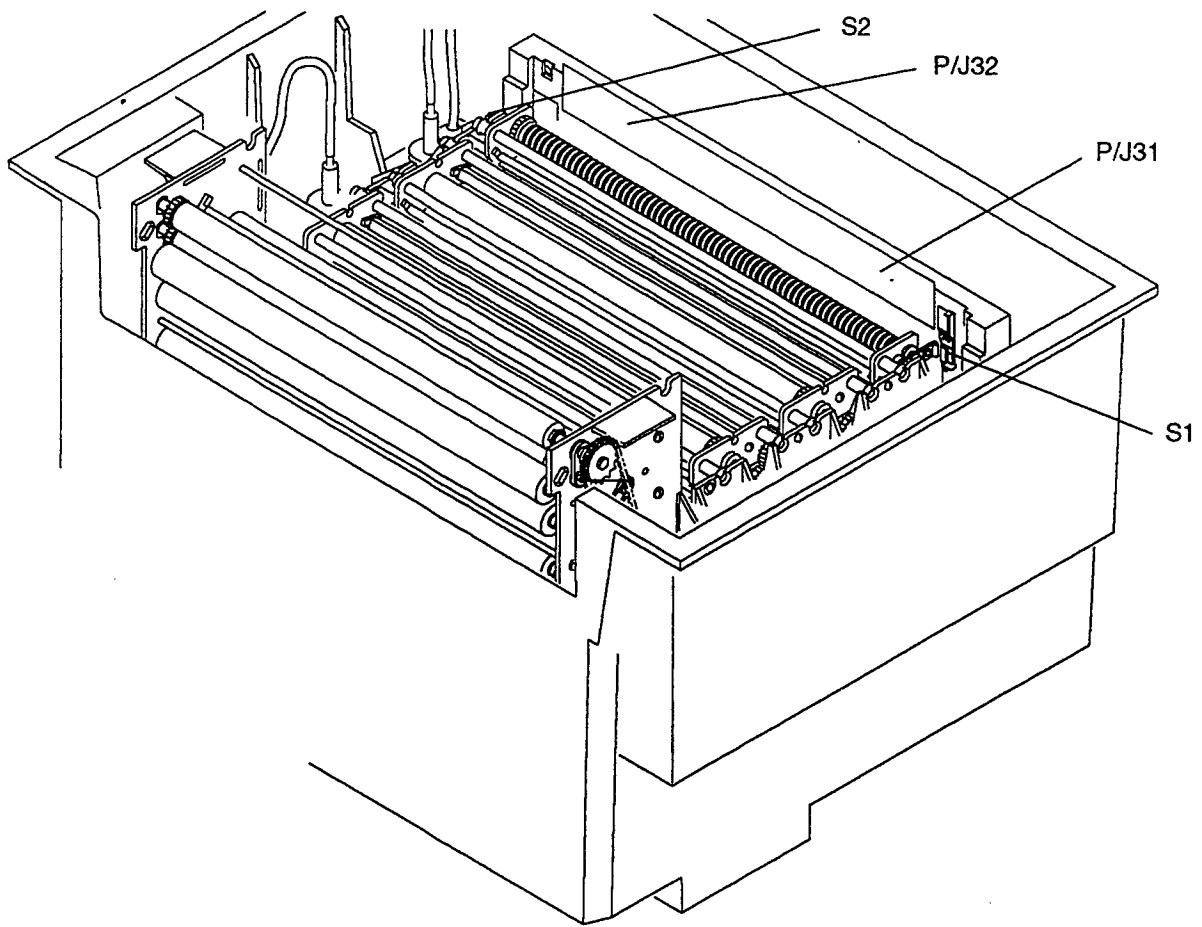
	Page
TP507 500 Circuit Board - +5 V DC .....	11
TP522 500 Circuit Board - +24 V DC .....	11
TP523 500 Circuit Board - +12 V DC .....	11
TP532 500 Circuit Board - -12 V DC .....	11
TP533 500 Circuit Board - Ground .....	11

### Thermistors - RT

	Page
RT1 Developer Thermistor .....	8
RT2 Fixer Thermistor .....	8
RT3 Dryer Thermistor .....	9

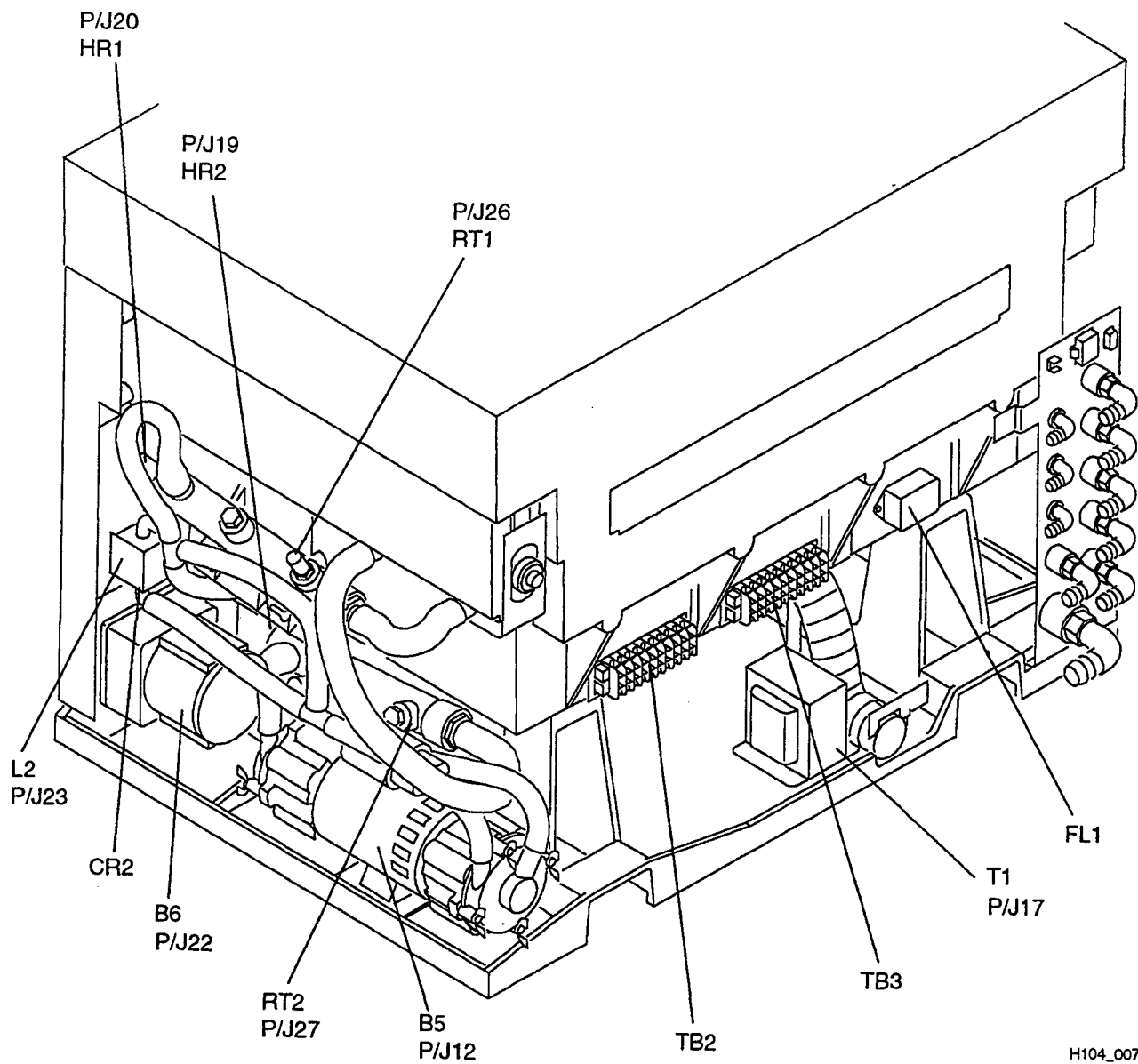
### Transformers - T

	Page
T1 Autotransformer .....	8



P104\_0206DCA  
H104\_0206DA

**Top Interior View**



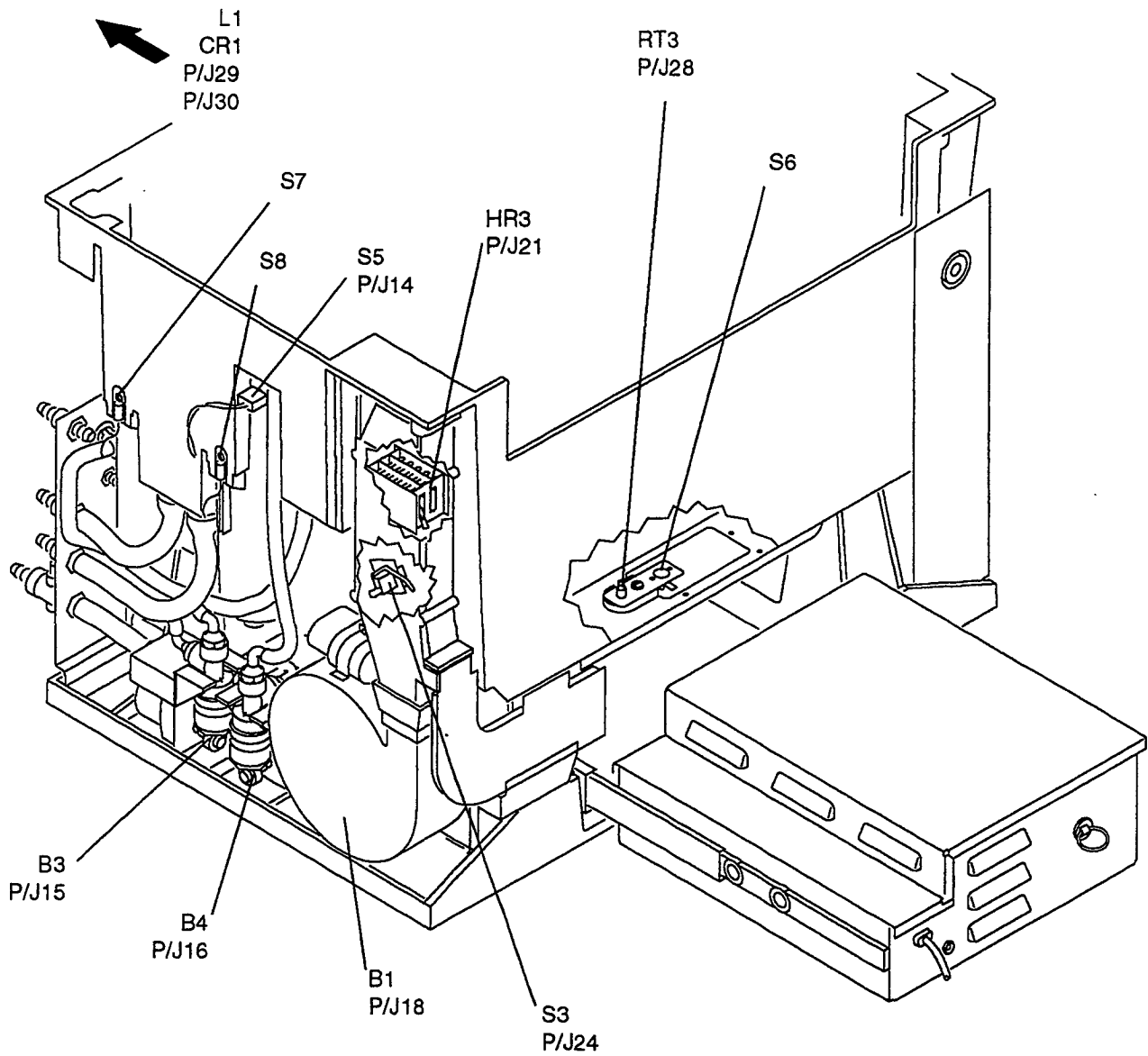
H104\_0078DCB  
P104\_0078DA

**Feed End View**



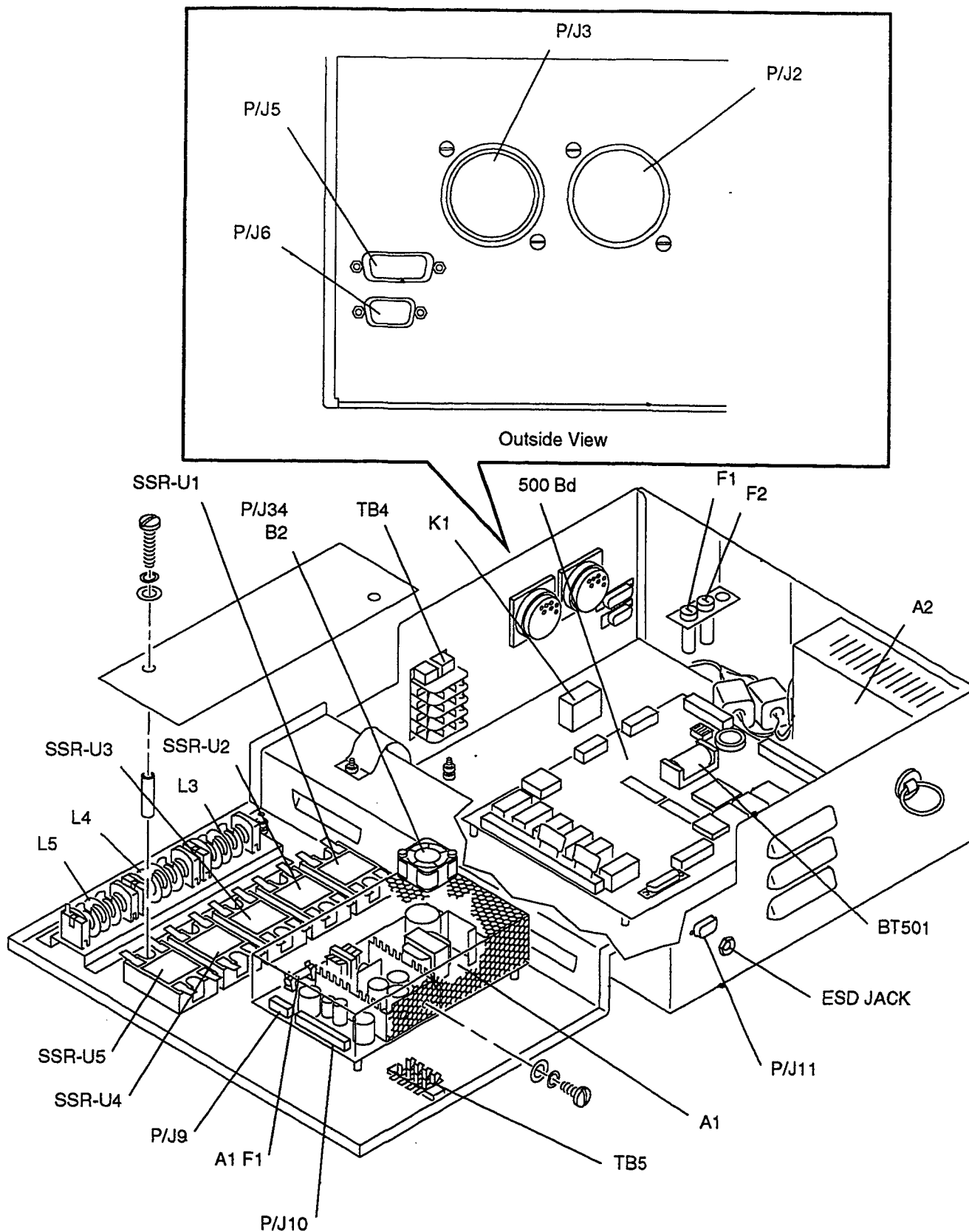
# NOTE

L1, CR1, and P/J30 are located in the MULTILoader 300.



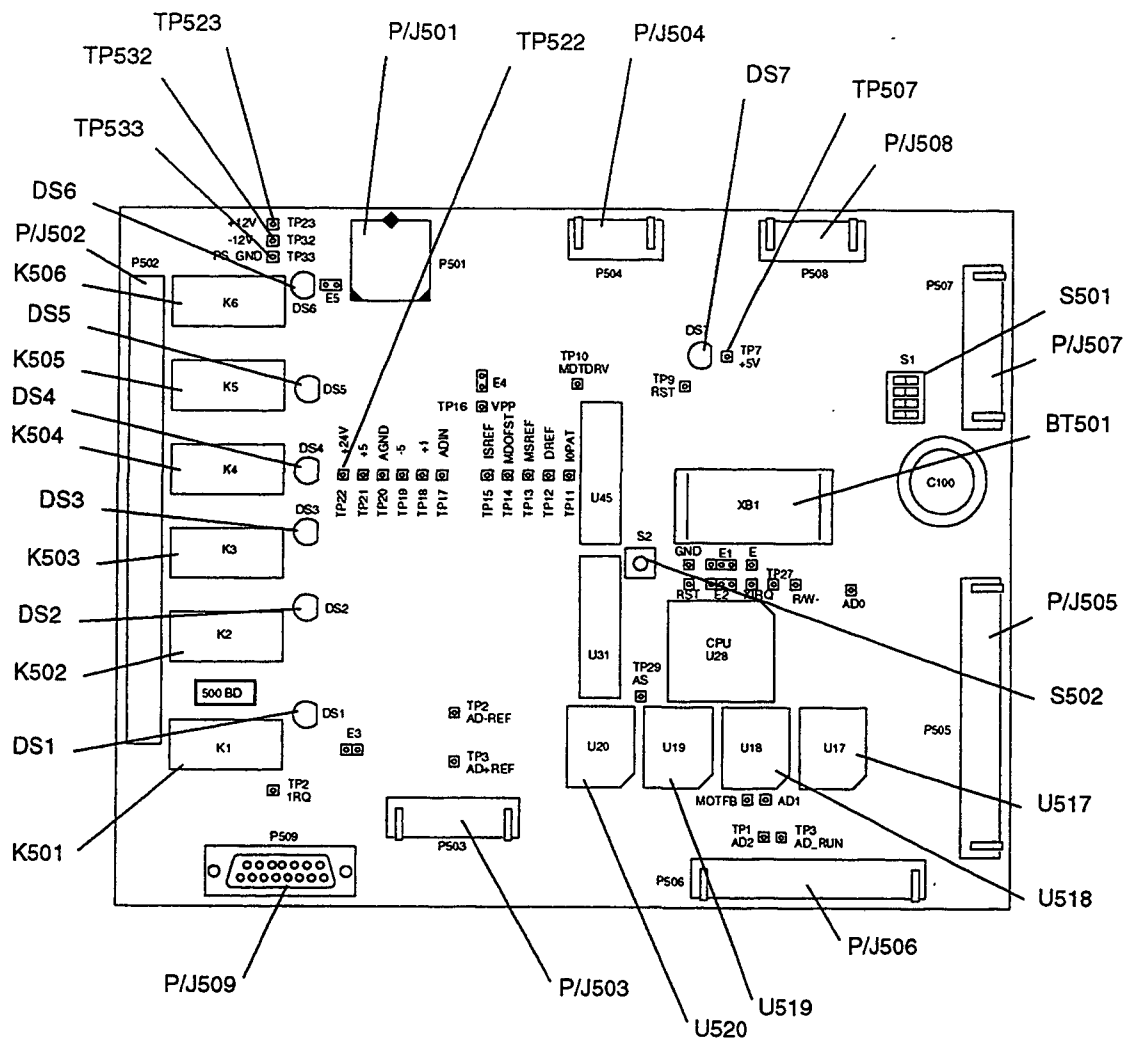
H104\_0419DCC  
H104\_0419DA

Receive End View



H104\_0545ECA  
H104\_0545EA

Electrical Box



H108\_0285ECA  
H108\_0285EA

500 Board

3058CL\_B.txt

*Kodak and X-Omat are trademarks.*

Printed in USA

**Customer Equipment Services Division**

**EASTMAN KODAK COMPANY • ROCHESTER, N.Y. 14650**

