

X-RAY FILM VIEWER ST-SERIES



- 1 field, viewing area 36 x 43cm, 2x 15W..... Order no. 0022 0400 30
2 field, viewing area 83 x 43cm, 2x 25W..... Order no. 0022 0800 60
3 field, viewing area 121 x 43cm, 2x 36W..... Order no. 0022 1300 90

Dr. Mach GmbH u. Co., Flossmannstrasse 28, D-85560 Ebersberg
Tel.: +49 (0)8092 2093 0, Fax +49 (0)8092 2093 50
Internet: www.dr-mach.com, E-mail: info@dr-mach.de

List of contents

1. Safety instructions	page 3
2. Mounting overview of the x-ray film viewer.....	page 3
3. Operating the x-ray film viewer.....	page 4
4. Changing of spare parts	page 5
4.1 Opening the x-ray film viewer	page 5
4.2 Changing the fuses	page 5
4.3 Changing the fluorescent lamps and the starter	page 6
4.4 Changing the adjustable nylon thread	page 6
4.5 Closing the x-ray film viewer	page 6
5. Spare parts.....	page 7
6. Spare parts list	page 8

1. Safety instructions

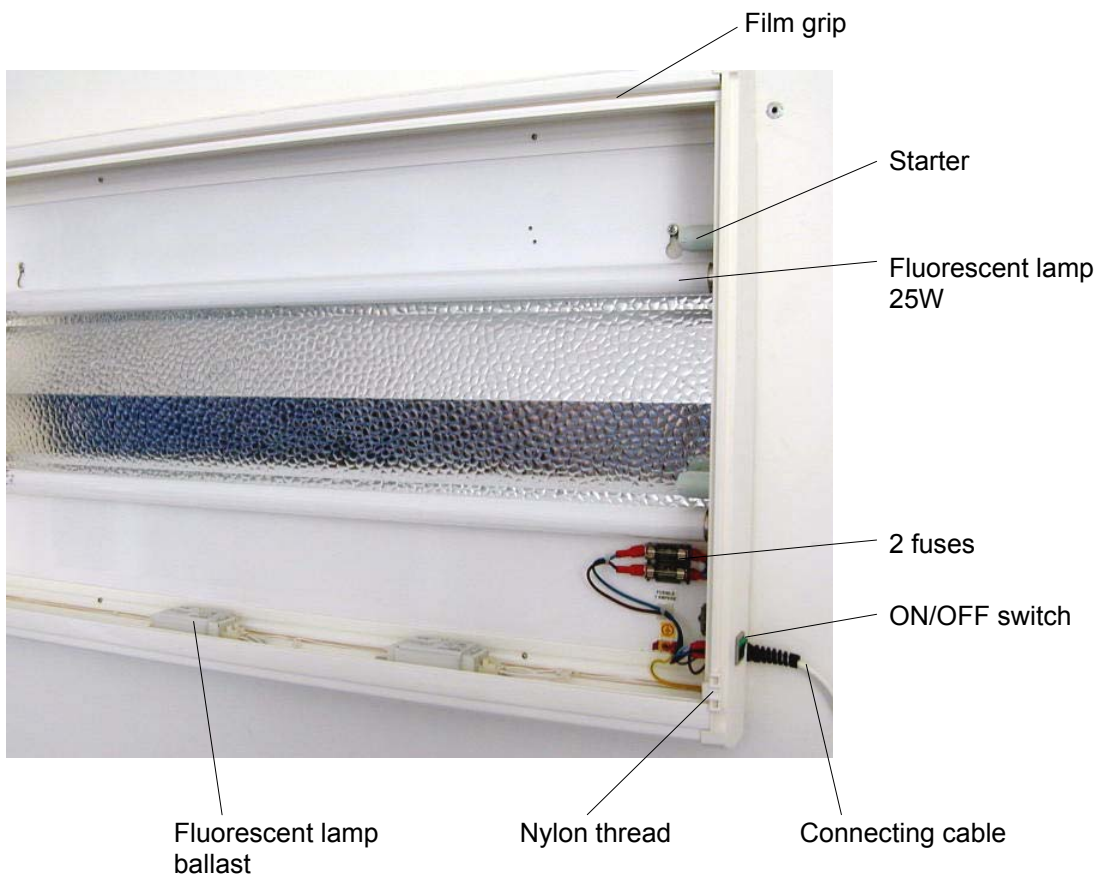
Please pay attention to the directions for use when handling the x-ray film viewer.

The manufacturer is only responsible for the safety of the x-ray film viewers if repairs and alterations have been carried out by himself or a company who can guarantee that the safety regulations have been observed.

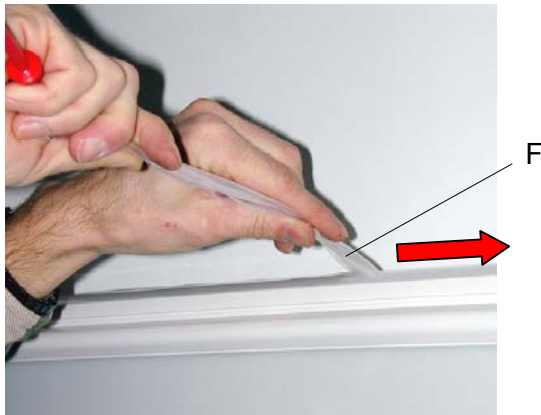
The manufacturer is not liable for personal or material damages if the x-ray film viewer is misappropriately or incorrectly operated or misused.

2. Mounting overview of the x-ray film viewer

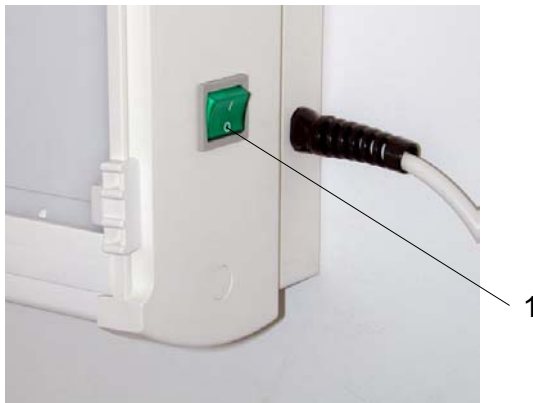
Example: x-ray film viewer with 2 fields, viewing area 83 x 43cm, 2x 25W



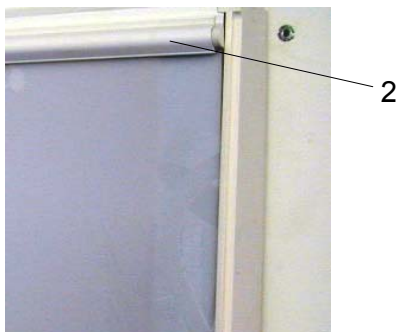
3. Operating the x-ray film viewer



- After mounting the x-ray film viewer on the wall using the enclosed safety dowels and screws, remove the **protective foils F** at the upper and bottom side of the viewer.



- Turn on the x-ray film viewer with the **switch 1**.
- Fix the film with the **film grip 2**.

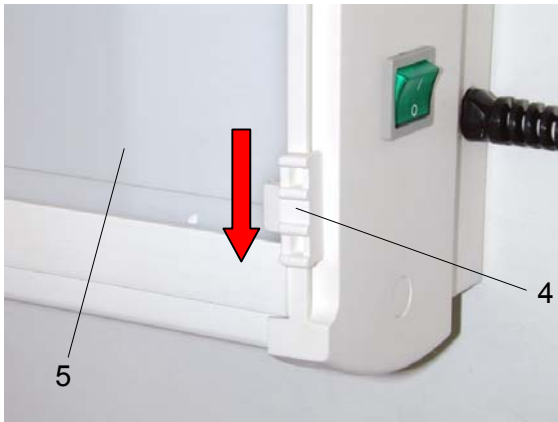


4. Changing of spare parts

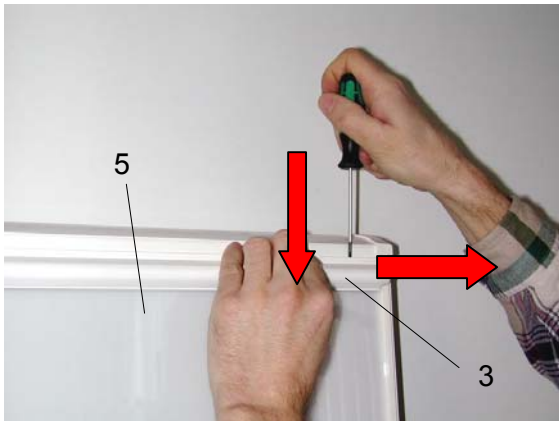
4.1 Opening the x-ray film viewer

Attention!
Unplug from mains.

- Slide down the adjustable **nylon thread 4** taking care not to damage the **front panel 5**.



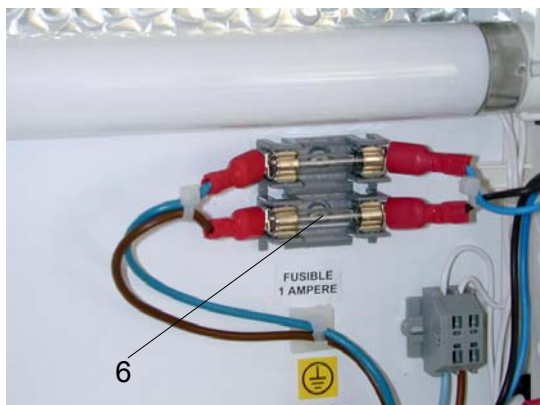
- Press down gently on the **film grip 3** and insert the tip of a thin flat head screw driver between the grip and the housing.
- Release the **film grip 3** together with **panel 5** by prying it open with the screw driver every few inches across the top.
- You may now carefully pull the **panel 5** in a flat angle upward out of its holding.



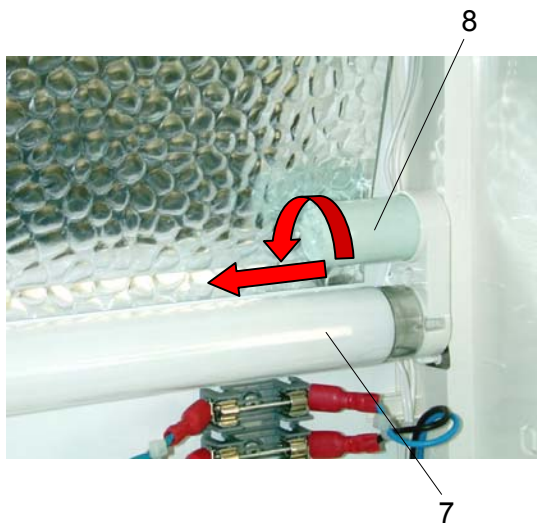
4.2 Changing the fuses

Attention!
Unplug from mains.

- Remove the **fuse 6** off its mounting device (eventually by using a screw driver).
- Mount the new fuse.
- Check the function of the fuse.



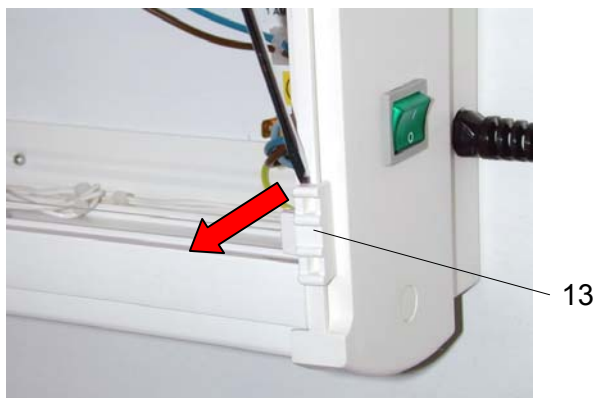
1 field / 2 x 15W	2 fuses 1A
2 fields / 2 x 25W	2 fuses 1A
3 fields / 2 x 36W	2 fuses 1A



4.3 Changing the fluorescent lamps and the starter

Attention!
Unplug from mains.

- Turn the **fluorescent lamp 7** for approx. 90° to the left and pull it out off its mounting device.
- Insert the new fluorescent lamp.
- Turn the fluorescent lamp for approx. 90° to the right until it snaps in.
- Turn the **starter 8** for approx. 20° to the left and remove it by pulling it forward.
- Insert the new starter.
- Turn the starter for approx. 20° to the right until it snaps in.



4.4 Changing the nylon thread

- Loosen the two **sliders 13** of the nylon thread by using a screw driver.



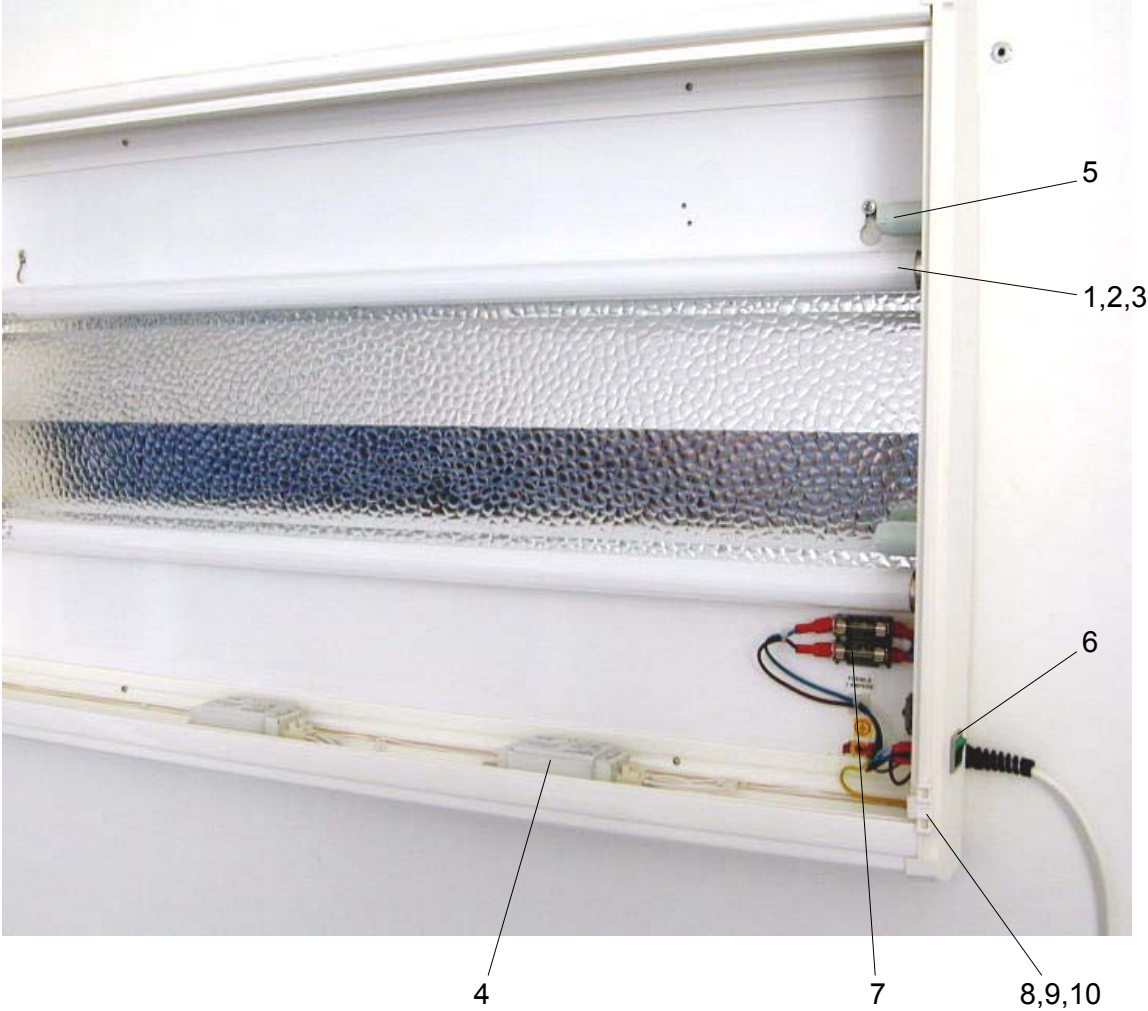
- Exchange the nylon thread.
- Mount the two sliders of the nylon thread to the lateral guidances of the x-ray film viewer, until they snap in.



4.5 Closing the x-ray film viewer

- Insert the **front panel 5** in a flat angle at the bottom part of the x-ray film viewer.
- Press the **front panel 5** at the upper edge of the x-ray film viewer against its housing, until the panel snaps in.

5. Spare parts



6. Spare parts list

Pos.	Name	X-ray film viewer					
		1 field		2 fields		3 fields	
		Qty.	No.	Qty.	No.	Qty.	No.
1	Fluorescent lamp 15W*	2					
2	Fluorescent lamp 25W*			2			
3	Fluorescent lamp 36W*					2	
4	Fluorescent lamp ballast	1		2		2	
5	Starter	2		2		2	
6	ON/OFF switch	1		1		1	
7	Fuse 1A	2		2		2	
8	Nylon thread (short size)	1					
9	Nylon thread (middle size)			1			
10	Nylon thread (long size)					1	

* We recommend the change of the entire set of fluorescent lamps, so the light quality remains at a constant high level.