

Classifying medical equipment based on its function and usage area in hospital

- General Bedside Nursing equipment
- Utility Equipment and Medical Gas System
- Dental and Dental Laboratory equipment
- Theatre and Surgery equipment
- Ventilation and Anaesthesia equipment
- Cardiovascular and Monitoring equipment
- Gynaecology and obstetrics equipment
- Paediatric equipment
- Physiotherapy equipment
- Dialysis equipment
- Medical Imaging equipment
- Laboratory equipment



13.2.3 Classifying medical equipment based on its function and usage area in hospital

**Unit B 13.2 Medical Equipment Uses and Categories
Module 279 18 B Medical Instrumentation I**

General Bedside Nursing



Ox.Concentrator



Injector



Stethoscope



Oto/Ophthalmoscope



© Blood Pressure Machine

Pulse Oximeter

Suction Machine

Nebulizer

Scales

Utility Equipment and Medical Gas System



Water Distiller



Medical Gas



Generator Set



Feeder Pillar



Wall Distribution



Autoclave



Weighing



Laundry



Hot Water



Ironing

Dental and Dental Laboratory equipment



1. dental light
2. dental chair
3. dental treatment unit
4. operator chair
5. assistant chair



Dental Furnace



Polymerization unit



Amalgam separator



Drills



Amalgamator

Theatre and Surgery equipment



electrocautery machine



operating microscope



endoscope



Ventilation and Anaesthesia equipment



ventilator



anaesthesia machine



vaporiser



scavenging system

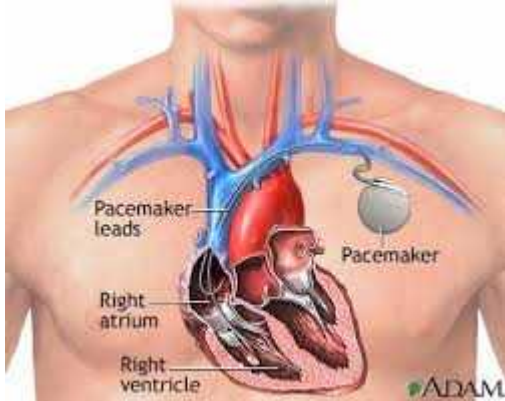
Cardiovascular and Monitoring equipment



ECG Recorder



Defibrillator

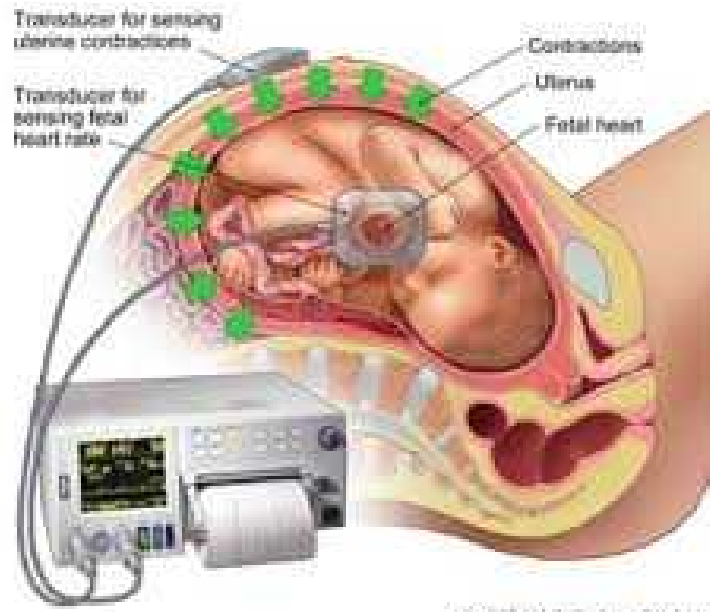


Pacemaker



Physiological Monitor

Gynaecology and obstetrics equipment



Foetal Heart Monitor



Infant Incubator



Resuscitaire



Insufflator



Vacuum Extractor and Pump



Infant Transport Incubator

Paediatric equipment



Phototherapy unit



Radiant warmer



infant blood pressure machine



Infant weighing scale



Laryngoscope



Physiotherapy equipment



Infrared treatment light



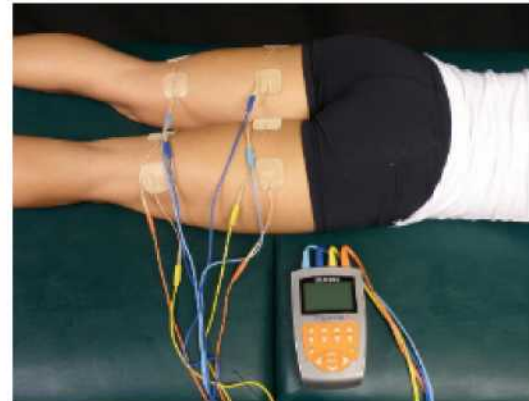
Therapeutic Ultrasound



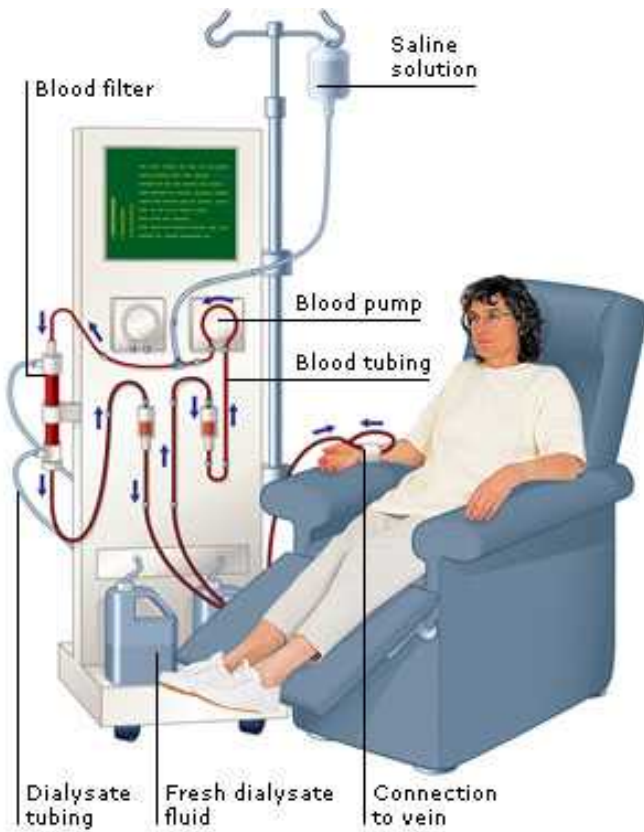
Electro-muscular stimulator



short-wave diathermy machine



Haemodialysis equipment

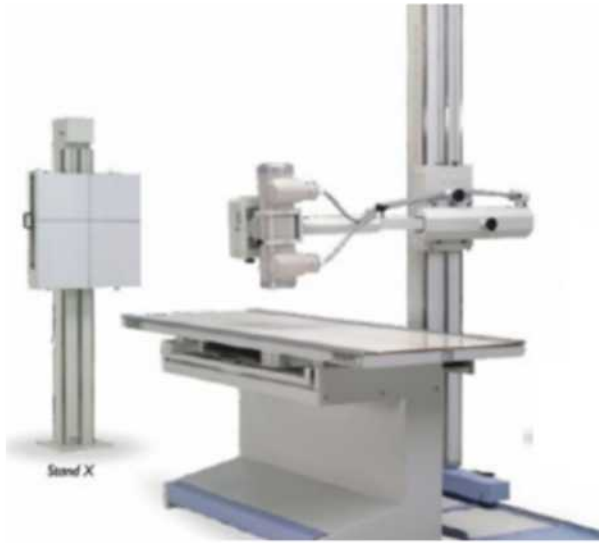


Haemodialysis machine



Water supply for haemodialysis

Medical Imaging equipment: X-ray



X-ray system



X-ray film processor

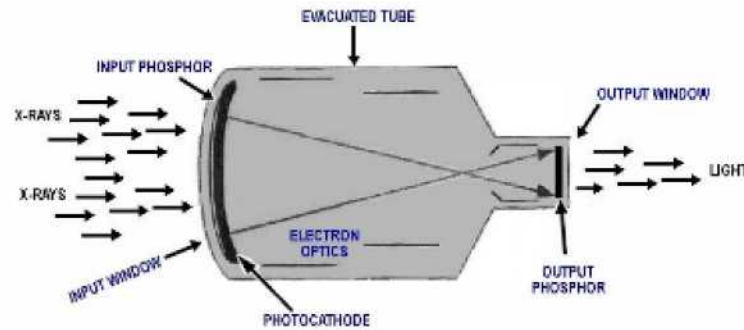


Image Intensifier



Medical Imaging equipment



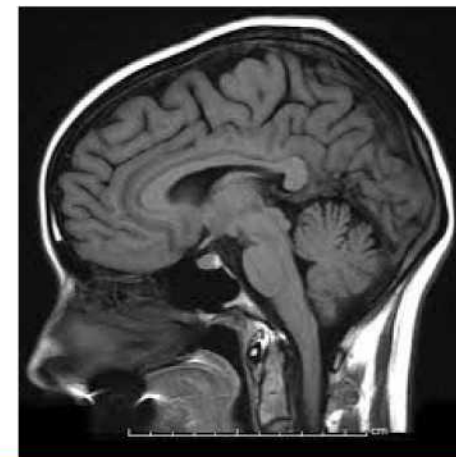
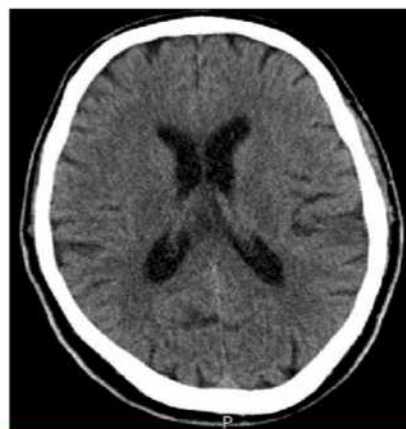
Ultrasound



CT scanner



MR scanner



Laboratory equipment

Microscope



Hematology
analyser

Hemoglobin
& glucose
meter



Platelet
aggregation
analyser

chemistry and
immunochemistr
y analyser



Flame
photometer

Laboratory equipment (2)



Blood gas analyser

Microbiology analyser



Tissue processor

embedding center, stainer and microtome



centrifuges



incubators

Vortex mixer



END

The creation of this presentation was supported by a grant from THET:

see <https://www.thet.org/>



PARTNERSHIPS FOR GLOBAL HEALTH
